

# 2008

## M8 EFI



## ILLUSTRATED PARTS MANUAL

MODEL NUMBER S2008M8H3EUSB - 153  
MODEL NUMBER S2008M8H3EUSO - 153  
MODEL NUMBER S2008M8H3EOSB - 153 (INTERNATIONAL)  
MODEL NUMBER S2008M8HSPUSW - 153  
MODEL NUMBER S2008M8HNFUSB - 153  
MODEL NUMBER S2008M8HSPOSW - 153 (INTERNATIONAL)  
MODEL NUMBER S2008M8HEKUSB - 162  
MODEL NUMBER S2008M8HEKUSO - 162



# TABLE OF CONTENTS

## 2008 M8 EFI

(Model No. S2008M8H3EUSB) - (153)

(Model No. S2008M8H3EUSO) - (153)

(Model No. S2008M8H3EOSB) - (153) - Int.

(Model No. S2008M8HSPUSW) - (153)

(Model No. S2008M8HNFUSB) - (153)

(Model No. S2008M8HSPOSW) - (153) - Int.

(Model No. S2008M8HEKUSB) - (162)

(Model No. S2008M8HEKUSO) - (162)

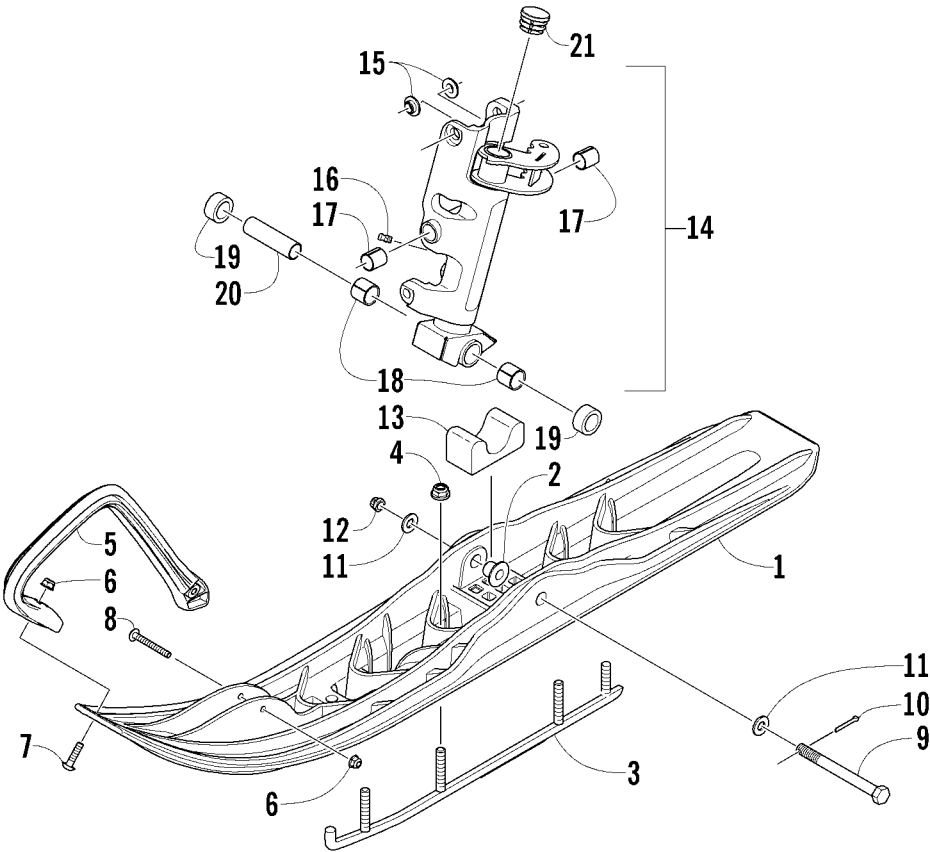
|   |    |
|---|----|
| SKI AND SPINDLE ASSEMBLY .....  | 1  |
| A-ARM ASSEMBLY .....  | 2  |
| FRONT SUSPENSION SHOCK ABSORBER ASSEMBLY .....                        | 3  |
| FRONT SUSPENSION SHOCK ABSORBER ASSEMBLY (Sno Pro) .....              | 4  |
| FRONT SUSPENSION SHOCK ABSORBER .....                                 | 5  |
| FRONT SUSPENSION SHOCK ABSORBER (Sno Pro) .....                       | 6  |
| STEERING POST ASSEMBLY .....  | 7  |
| TIE ROD ASSEMBLY .....  | 8  |
| HANDLEBAR AND CONTROLS .....  | 9  |
| HYDRAULIC BRAKE CONTROL ASSEMBLY .....                                | 10 |
| DRIVE TRAIN SHAFT AND BRAKE ASSEMBLIES .....                          | 11 |
| GEARCASE ASSEMBLY .....   | 12 |
| SLIDE RAIL AND TRACK ASSEMBLY .....                                   | 13 |
| IDLER WHEEL ASSEMBLY .....  | 14 |
| REAR SUSPENSION FRONT ARM ASSEMBLY .....                              | 15 |
| REAR SUSPENSION FRONT ARM SHOCK ABSORBER .....                        | 16 |
| REAR SUSPENSION REAR ARM ASSEMBLY .....                               | 17 |
| REAR SUSPENSION REAR ARM SHOCK ABSORBER .....                         | 18 |
| FRONT FRAME AND FOOTREST ASSEMBLY .....                               | 19 |
| HOOD AND WINDSHIELD ASSEMBLY .....                                    | 20 |
| HOOD AND WINDSHIELD ASSEMBLY (Nightfire Sno Pro) .....                | 21 |
| HEADLIGHT, INSTRUMENTS, AND WIRING ASSEMBLIES .....                   | 22 |
| HEADLIGHT, INSTRUMENTS, AND WIRING ASSEMBLIES (Sno Pro) .....         | 23 |
| CONSOLE AND SWITCH ASSEMBLY .....                                     | 24 |
| BELLY PAN ASSEMBLY .....  | 25 |
| BELLY PAN ASSEMBLY (Nightfire Sno Pro) .....                          | 26 |
| BELT GUARD ASSEMBLY .....   | 27 |
| GAS TANK ASSEMBLY .....   | 28 |
| FUEL PUMP ASSEMBLY .....  | 29 |
| SEAT ASSEMBLY .....   | 30 |
| SEAT ASSEMBLY (Nightfire Sno Pro) .....                               | 31 |
| TUNNEL, REAR BUMPER, AND TAILLIGHT ASSEMBLY .....                     | 32 |
| TUNNEL, REAR BUMPER, AND TAILLIGHT ASSEMBLY (Nightfire Sno Pro) ..... | 33 |
| COOLING ASSEMBLY .....  | 34 |
| ENGINE AND RELATED PARTS .....  | 35 |
| EXHAUST ASSEMBLY .....  | 36 |
| AIR INTAKE ASSEMBLY .....   | 37 |
| AIR SILENCER ASSEMBLY .....   | 38 |
| OIL TANK ASSEMBLY .....   | 39 |
| DRIVE CLUTCH .....  | 40 |
| DRIVEN CLUTCH .....   | 41 |
| CYLINDER AND HEAD ASSEMBLY .....                                      | 42 |
| CRANKCASE ASSEMBLY .....  | 43 |
| PISTON AND CRANKSHAFT .....   | 44 |
| REED VALVE ASSEMBLY .....   | 45 |
| THROTTLE BODY ASSEMBLY .....  | 46 |
| OIL PUMP .....  | 47 |
| WATER PUMP/WATER MANIFOLD .....                                       | 48 |
| RECOIL STARTER .....  | 49 |
| MAGNETO .....   | 50 |
| ELECTRICAL .....  | 51 |
| SERVOMOTOR ASSEMBLY .....   | 52 |

■ NOTE: The illustrations used in this Parts Manual are for reference to replacement part numbers only and are not to be used for assembly. For assembly procedures, use an Arctic Cat Service Manual. Underlined part numbers are new for the 2008 model year. For a complete list of related items, refer to the current accessory catalog.

©2007 Arctic Cat Inc.

Printed September 2007

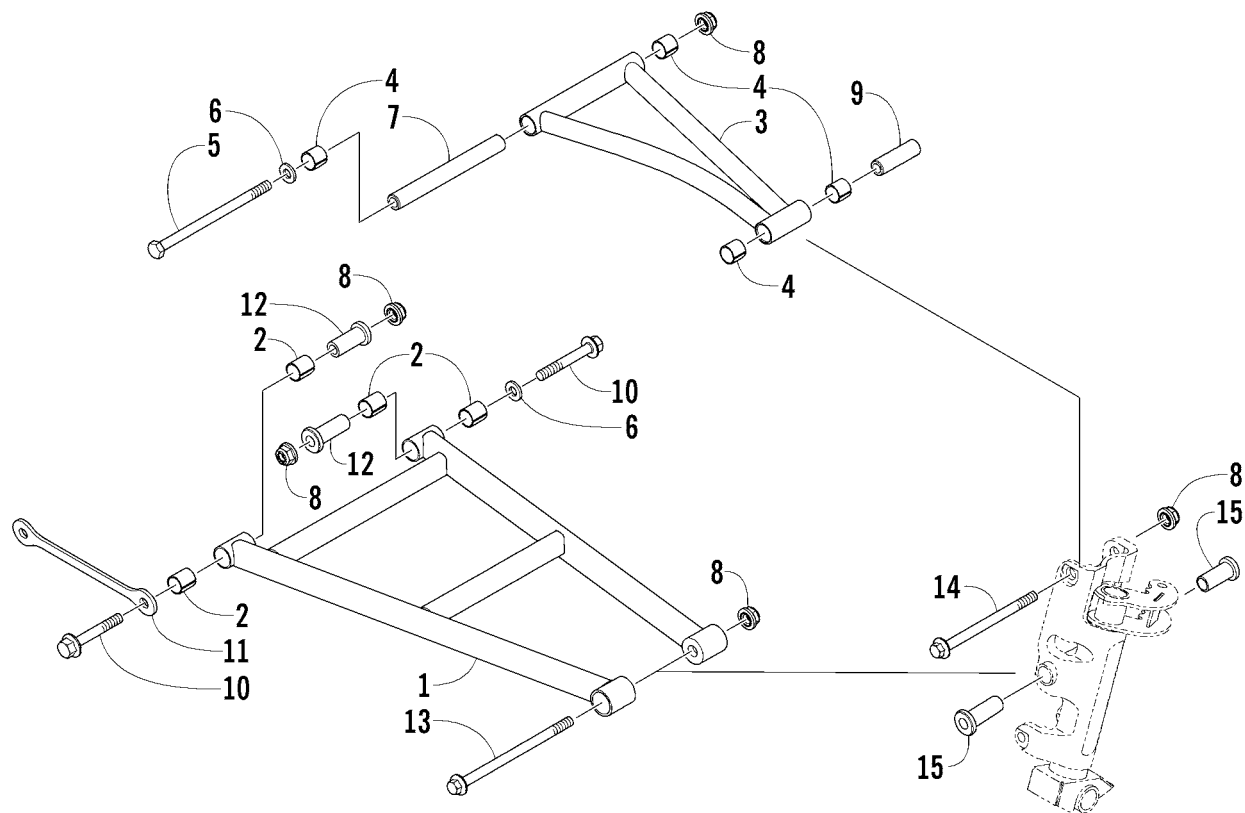
®™ Trademarks of Arctic Cat Inc., Thief River Falls, MN 56701



# SKI AND SPINDLE ASSEMBLY

0742-409

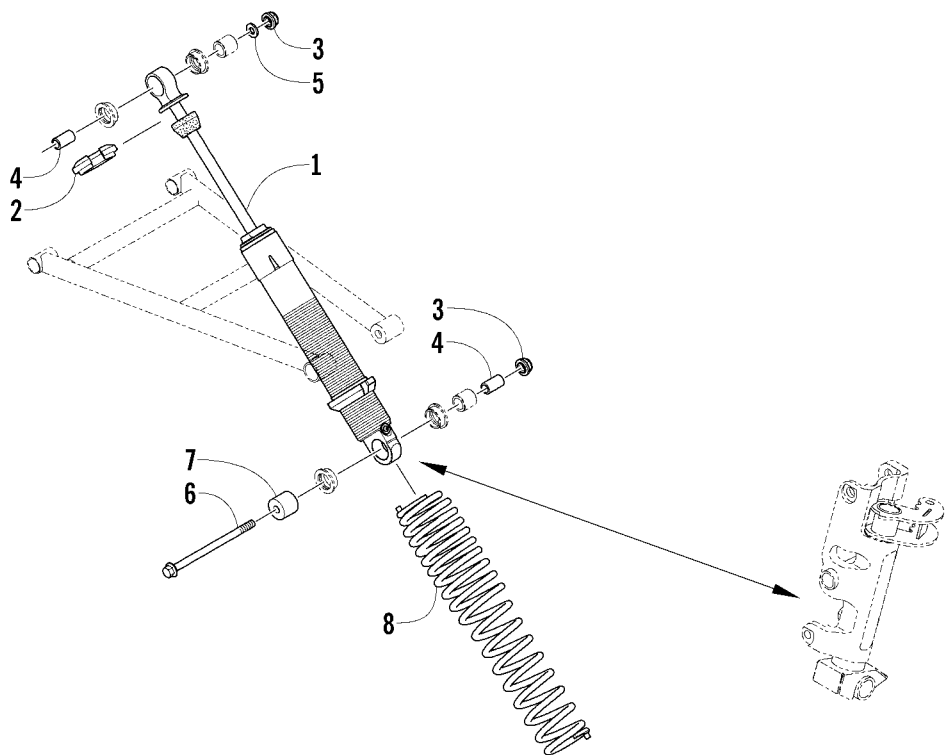
| Ref. | Part No.        | Qty. | Description   | Ref. | Part No. | Qty. | Description       |
|------|-----------------|------|---|------|----------|------|-------------------|
| 1    | 2603-586        | 2    | Ski, Plastic - Black  | 15   | 0603-647 | 4    | ● Insert, Spindle |
| 2    | 2603-397        | 4    | Insert, Ski   | 16   | 1623-010 | 2    | ● Fitting, Grease |
| 3    | 0703-871        | 2    | Wearbar   | 17   | 0603-083 | 4    | ● Bearing         |
| 4    | 8047-486        | 8    | Nut, Lock   | 18   | 0603-158 | 4    | ● Bearing         |
| 5    | 2603-598        | 2    | Handle, Plastic - Black   | 19   | 1603-908 | 4    | Spacer            |
| 6    | 8047-366        | 4    | Nut, Lock   | 20   | 2603-548 | 2    | Axle, Spindle     |
| 7    | 1623-689        | 2    | Screw, Machine  | 21   | 0623-831 | 2    | Cap, Spindle      |
| 8    | 1623-688        | 2    | Screw, Machine  |      |          |      |                   |
| 9    | 0623-776        | 2    | Screw, Cap  |      |          |      |                   |
| 10   | 0123-458        | 2    | Pin, Cotter   |      |          |      |                   |
| 11   | 0623-728        | 4    | Washer  |      |          |      |                   |
| 12   | 0123-296        | 2    | Nut, Lock   |      |          |      |                   |
| 13   | 2603-553        | 2    | Damper, Ski   |      |          |      |                   |
| 14   | <u>2703-246</u> | 1    | Spindle, Steering - Right - Platinum<br>(inc. 15-18)                  |      |          |      |                   |
|      | <u>2703-247</u> | 1    | Spindle, Steering - Left - Platinum<br>(inc. 15-18)                   |      |          |      |                   |
|      | <u>2703-356</u> | 1    | Spindle, Steering - Right - Black<br>(inc. 15-18) (Nightfire Sno Pro) |      |          |      |                   |
|      | <u>2703-357</u> | 1    | Spindle, Steering - Left - Black (inc. 15-18)<br>(Nightfire Sno Pro)  |      |          |      |                   |



A-ARM ASSEMBLY

0742-428

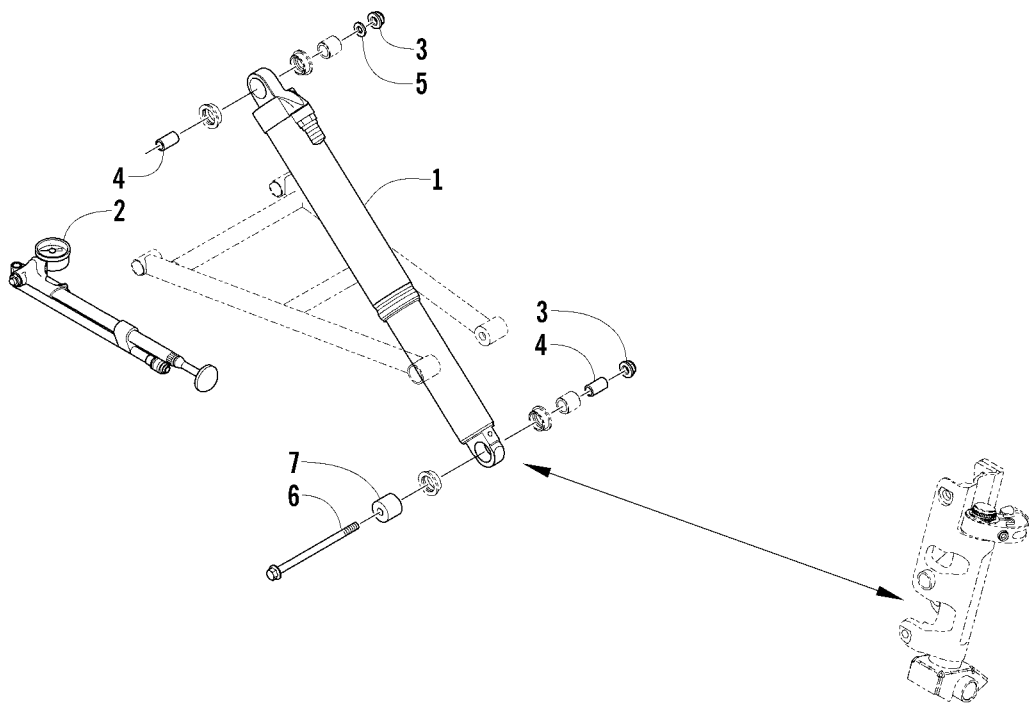
| Ref. | Part No. | Qty. | Description  | Ref. | Part No. | Qty. | Description             |
|------|----------|------|--|------|----------|------|-------------------------|
| 1    | 1703-253 | 2    | A-Arm, Lower - Platinum (inc. 2)                     | 7    | 1603-563 | 2    | Axle, Inner - Upper Arm |
|      | 1703-883 | 2    | A-Arm, Lower - Black (inc. 2)<br>(Nightfire Sno Pro) | 8    | 8047-486 | 10   | Nut, Lock               |
| 2    | 1603-895 | 8    | ● Bearing  | 9    | 0603-864 | 2    | Tube, Axle              |
| 3    | 2703-119 | 2    | A-Arm, Upper - Platinum (inc. 4)                     | 10   | 8020-230 | 4    | Screw, Cap              |
|      | 2703-359 | 2    | A-Arm, Upper - Black (inc. 4)<br>(Nightfire Sno Pro) | 11   | 4606-402 | 1    | Brace, Lower A-Arm      |
| 4    | 0603-083 | 8    | ● Bearing  | 12   | 2603-179 | 4    | Axle, Inner - Lower Arm |
| 5    | 0623-952 | 2    | Screw, Cap   | 13   | 8026-236 | 2    | Screw, Cap              |
| 6    | 0623-664 | 4    | Washer   | 14   | 8026-232 | 2    | Screw, Cap              |
|      |          |      |  | 15   | 2603-591 | 4    | Axle, Powder Metal      |



# FRONT SUSPENSION SHOCK ABSORBER ASSEMBLY

0742-429

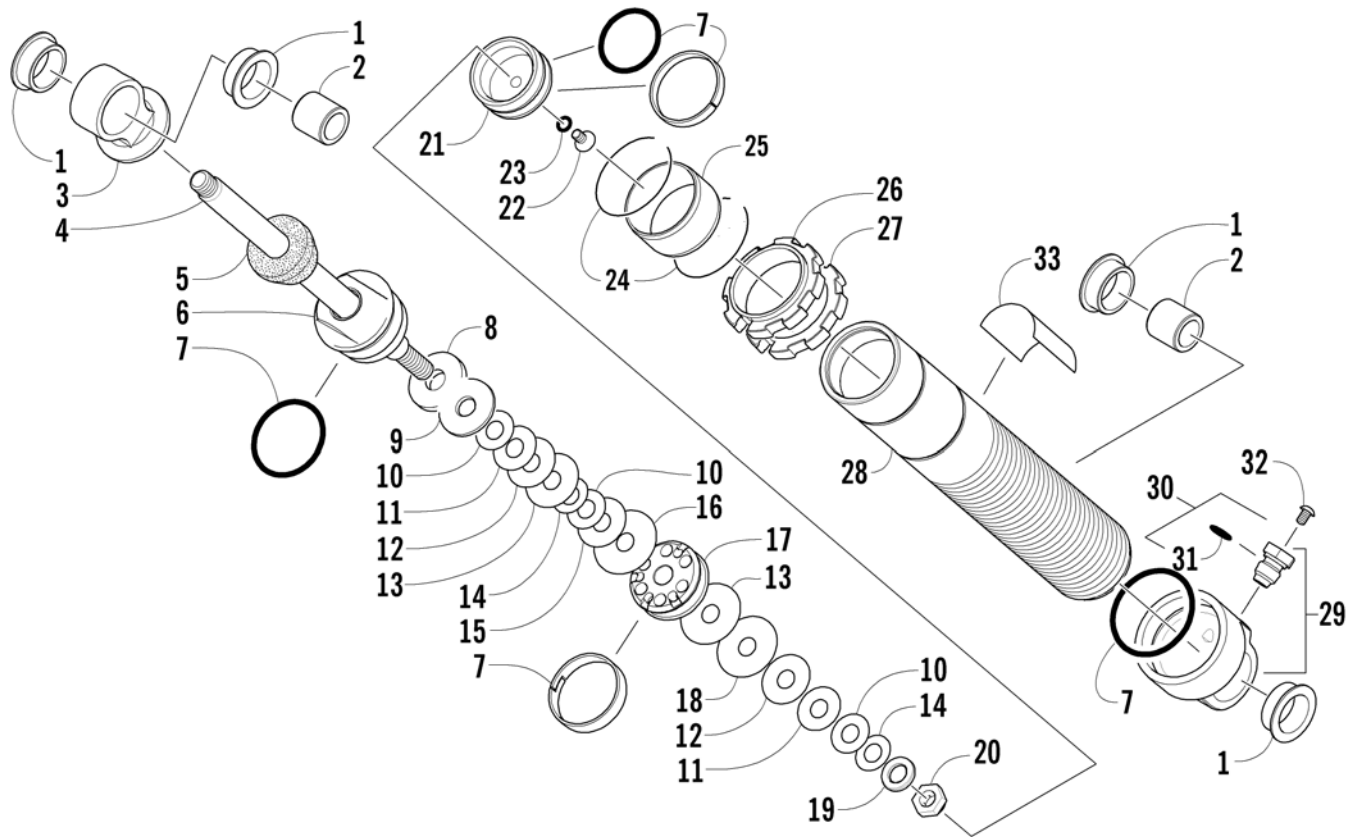
| Ref. | Part No. | Qty. | Description      | Ref. | Part No. | Qty. | Description                           |
|------|----------|------|------------------|------|----------|------|---------------------------------------|
| 1    | 1703-783 | 2    | Shock, Ski       | 6    | 8020-232 | 2    | Screw, Cap                            |
| 2    | 1603-890 | 2    | Retainer, Spring | 7    | 0603-648 | 2    | Spacer, Shock Mount                   |
| 3    | 8047-486 | 4    | Nut, Lock        | 8    | 1703-787 | 2    | Spring, Compression                   |
| 4    | 1603-023 | 4    | Sleeve, Shock    |      | 1703-890 | 2    | Spring, Compression - Orange (Orange) |
| 5    | 0623-991 | 2    | Washer           |      |          |      |                                       |



FRONT SUSPENSION SHOCK ABSORBER ASSEMBLY (Sno Pro)

0742-193

| Ref. | Part No. | Qty. | Description       | Ref. | Part No. | Qty. | Description         |
|------|----------|------|-------------------|------|----------|------|---------------------|
| 1    | 2703-137 | 2    | Shock, Ski        | 5    | 0623-991 | 2    | Washer              |
| 2    | 2603-614 | 1    | Pump, Air - Shock | 6    | 8020-232 | 2    | Screw, Cap          |
| 3    | 8047-486 | 4    | Nut, Lock         | 7    | 0603-648 | 2    | Spacer, Shock Mount |
| 4    | 1603-023 | 4    | Sleeve, Shock     |      |          |      |                     |

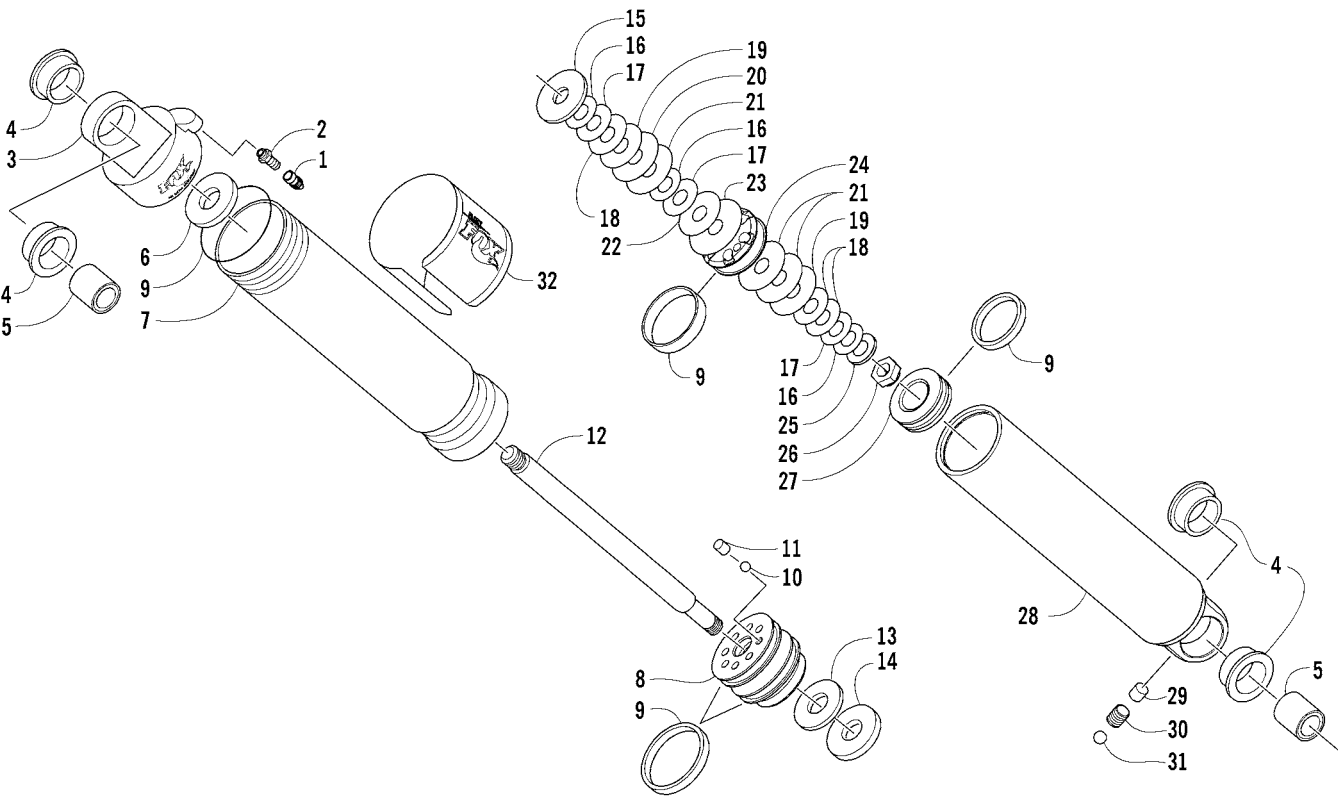


# **FRONT SUSPENSION SHOCK ABSORBER**

(Complete Shock Absorber p/n 1703-783)

0740-022 \*Not Illustrated

| Ref. | Part No. | Qty. | Description                 | Ref. | Part No. | Qty. | Description                 |
|------|----------|------|-----------------------------|------|----------|------|-----------------------------|
| 1    | 0603-955 | 4    | Bushing, Shock              | 18   | 0603-347 | 1    | Valve, 1.250 x 0.010 in.    |
| 2    | 1603-209 | 2    | Sleeve, Eyelet              | 19   | 0603-389 | 1    | Washer, Backup              |
| 3    | 0603-910 | 1    | Eyelet, Shock               | 20   | 0603-301 | 1    | Nut, Lock                   |
| 4    | 2603-416 | 1    | Rod, Shock                  | 21   | 2604-816 | 1    | Piston, Floating            |
| 5    | 2603-459 | 1    | Bumper, Shock               | 22   | 1604-316 | 1    | Screw, Relief (inc. 23)     |
| 6    | 2604-812 | 1    | Bearing - Assembly          | 23   | 1604-425 | 1    | ● O-Ring                    |
| 7    | 2604-815 | 1    | Kit, Seal/Rebuild           | 24   | 2603-245 | 2    | Retainer, Sleeve            |
| 8    | 2603-474 | 1    | Spacer                      | 25   | 2603-246 | 1    | Sleeve, Protector           |
| 9    | 0603-540 | 1    | Washer, Top Out             | 26   | 2604-840 | 1    | Nut, Adjuster               |
| 10   | 0603-338 | 3    | Valve, 0.900 x 0.010 in.    | 27   | 2604-841 | 1    | Nut, Locking - Adjuster     |
| 11   | 0603-341 | 2    | Valve, 1.000 x 0.010 in.    | 28   | 2603-460 | 1    | Body, Shock                 |
| 12   | 0603-343 | 2    | Valve, 1.100 x 0.008 in.    | 29   | 2604-817 | 1    | End Cap, Shock (inc. 30-31) |
| 13   | 0603-346 | 2    | Valve, 1.250 x 0.008 in.    | 30   | 0703-341 | 1    | ● Valve, Pressure (inc. 31) |
| 14   | 0603-335 | 2    | Valve, 0.800 x 0.010 in.    | 31   | 1604-318 | 1    | ●● O-Ring, Valve            |
| 15   | 0603-342 | 1    | Valve, 1.100 x 0.006 in.    | 32   | 0624-097 | 1    | Screw, Valve                |
| 16   | 0603-348 | 1    | Valve, 1.300 x 0.006 in.    | 33   | 2604-897 | 1    | Decal, Shock                |
| 17   | 2603-309 | 1    | Piston, 0.093 in. - Orifice | *    | 4639-368 | AR   | Oil, Gas Shock - 1 qt       |



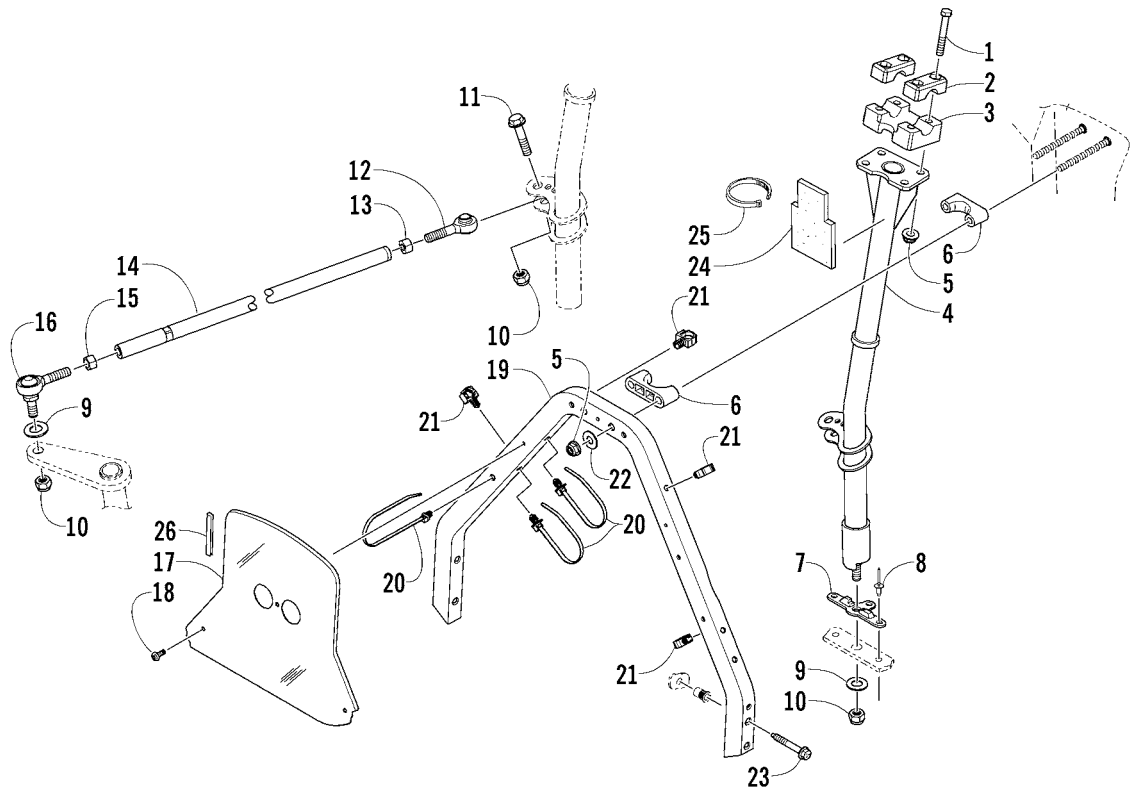
# **FRONT SUSPENSION SHOCK ABSORBER (Sno Pro)**

(Complete Shock Absorber p/n 2703-137)

0742-096 \*Bearing Assembly Rebuild Kit (p/n 2603-498) \*\*Not Illustrated

| Ref. | Part No. | Qty. | Description                | Ref. | Part No. | Qty. | Description                 |
|------|----------|------|----------------------------|------|----------|------|-----------------------------|
| 1    | 2603-327 | 1    | Cap, Air Valve             | 18   | 0603-341 | 3    | Valve, 1.000 x 0.010 in.    |
| 2    | 2603-511 | 1    | Valve, Air                 | 19   | 0603-343 | 2    | Valve, 1.100 x 0.008 in.    |
| 3    | 2603-418 | 1    | End Cap, Shock             | 20   | 0603-345 | 1    | Valve, 1.250 x 0.006 in.    |
| 4    | 0603-955 | 4    | Bushing, Shock             | 21   | 0603-346 | 3    | Valve, 1.250 x 0.008 in.    |
| 5    | 1603-209 | 2    | Sleeve, Shock              | 22   | 0603-342 | 1    | Valve, 1.100 x 0.006 in.    |
| 6    | 2603-613 | 1    | Spacer, Air Volume Reducer | 23   | 0603-349 | 1    | Valve, 1.300 x 0.008 in.    |
| 7    | 2603-412 | 1    | Body, Shock - Upper        | 24   | 2603-309 | 1    | Piston, 0.093 in. - Orifice |
| 8    | 2603-333 | 1    | Bearing - Assembly*        | 25   | 0603-389 | 1    | Washer, Backup              |
| 9    | 2604-796 | 1    | Kit, Seal/Cap Rebuild      | 26   | 0603-301 | 1    | Nut, Cap                    |
| 10   | 1604-315 | 1    | Ball, Bleed                | 27   | 2603-417 | 1    | Piston, Floating            |
| 11   | 1603-940 | 1    | Screw                      | 28   | 2603-414 | 1    | Body, Shock - Lower         |
| 12   | 2603-416 | 1    | Rod, Shock                 | 29   | 1604-428 | 1    | Plug, Rubber - Valve        |
| 13   | 0603-386 | 1    | Bumper, Internal - Top Out | 30   | 2603-338 | 1    | Screw, Set                  |
| 14   | 2603-474 | 1    | Spacer                     | 31   | 2603-337 | 1    | Ball, Air Valve             |
| 15   | 0603-540 | 1    | Washer, Top Out            | 32   | 2603-610 | 1    | Decal, Shock                |
| 16   | 0603-335 | 3    | Valve, 0.800 x 0.010 in.   | **   | 4639-368 | AR   | Oil, Shock - 1 qt           |
| 17   | 0603-338 | 3    | Valve, 0.900 x 0.010 in.   | **   | 4639-012 | AR   | Fluid, Float Shock - 8 oz   |

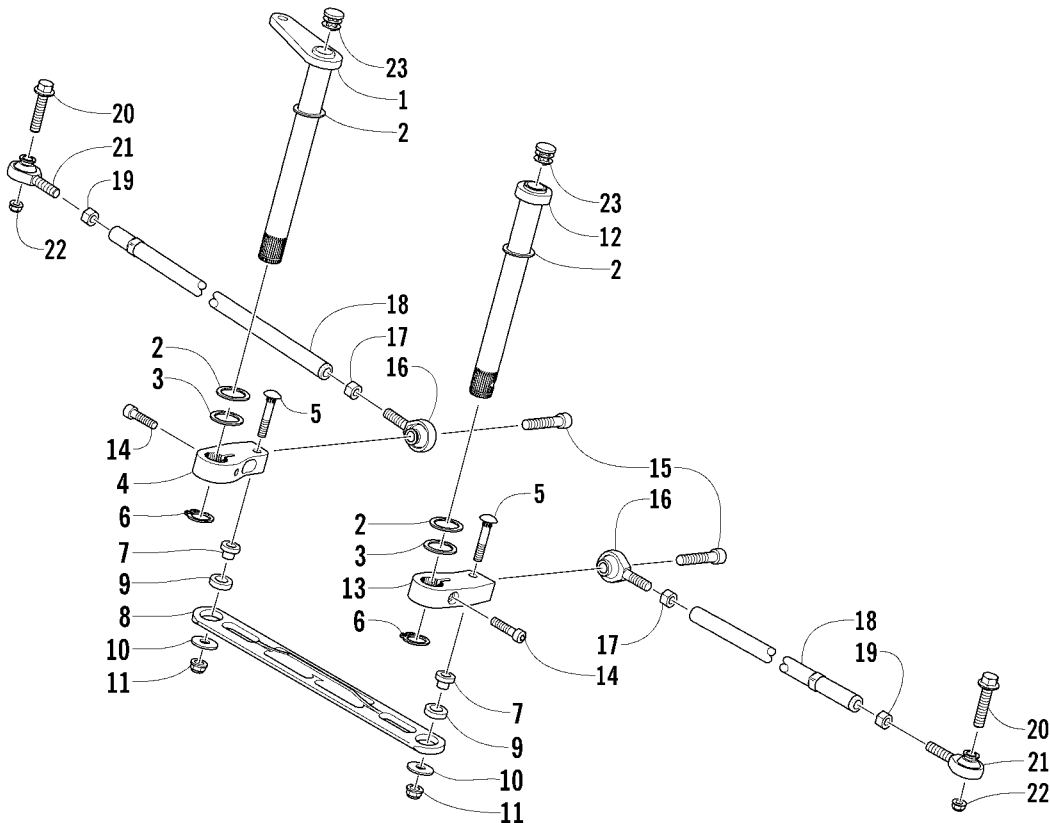




# STEERING POST ASSEMBLY

0742-479

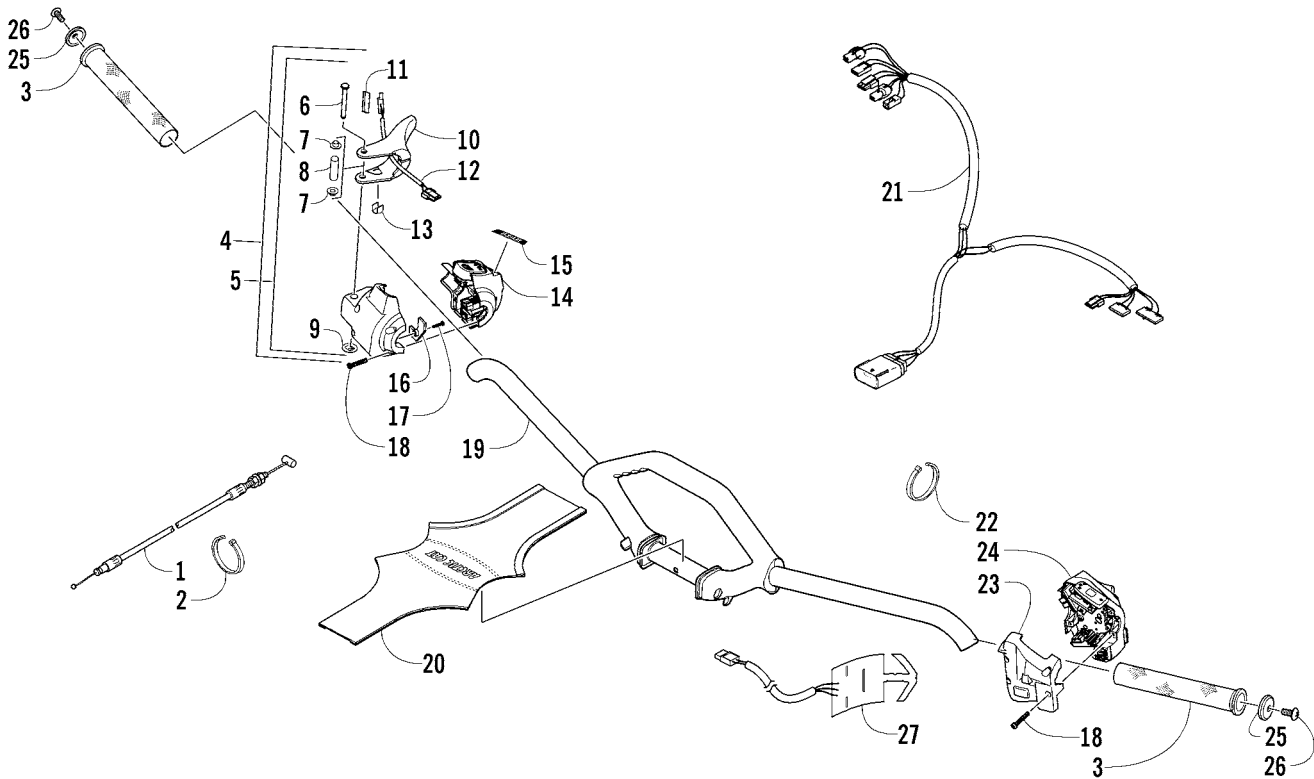
| Ref. | Part No. | Qty. | Description                             | Ref. | Part No. | Qty. | Description                            |
|------|----------|------|---|------|----------|------|--|
| 1    | 8002-138 | 4    | Screw, Cap                              | 14   | 0605-856 | 1    | Tube, Tie Rod                          |
| 2    | 0605-506 | 2    | Cap, Adjusting Block                    | 15   | 0123-917 | 1    | Nut, Hex - Left-Hand Thread            |
| 3    | 0605-507 | 1    | Block, Adjusting                        | 16   | 0605-511 | 1    | Ball Joint, Tie Rod - Left-Hand Thread |
| 4    | 1705-253 | 1    | Post, Steering                          | 17   | 4606-756 | 1    | Panel, Close-Out                       |
| 5    | 8047-426 | 6    | Nut, Lock                               | 18   | 1623-353 | 3    | Screw, Self-Tapping                    |
| 6    | 0605-576 | 2    | Block, Mounting - Steering Post         | 19   | 1705-244 | 1    | Support, Steering                      |
| 7    | 0605-943 | 1    | Stop, Steering Post                     | 20   | 0623-677 | 3    | Cable Tie, Push-Mount                  |
| 8    | 8060-888 | 3    | Rivet                                   | 21   | 1623-406 | 4    | Clip, Retaining                        |
| 9    | 0623-044 | 2    | Washer                                  | 22   | 8050-252 | 2    | Washer                                 |
| 10   | 0623-025 | 3    | Nut, Lock                               | 23   | 1623-482 | 4    | Screw, Cap                             |
| 11   | 8004-225 | 1    | Screw, Cap                              | 24   | 0617-538 | 1    | Foam, Steering Post                    |
| 12   | 0605-504 | 1    | Ball Joint, Tie Rod - Right-Hand Thread | 25   | 0123-788 | 1    | Cable Tie                              |
| 13   | 0623-294 | 1    | Nut, Hex - Right-Hand Thread            | 26   | 0706-371 | AR   | Trim                                   |



# TIE ROD ASSEMBLY

0742-434

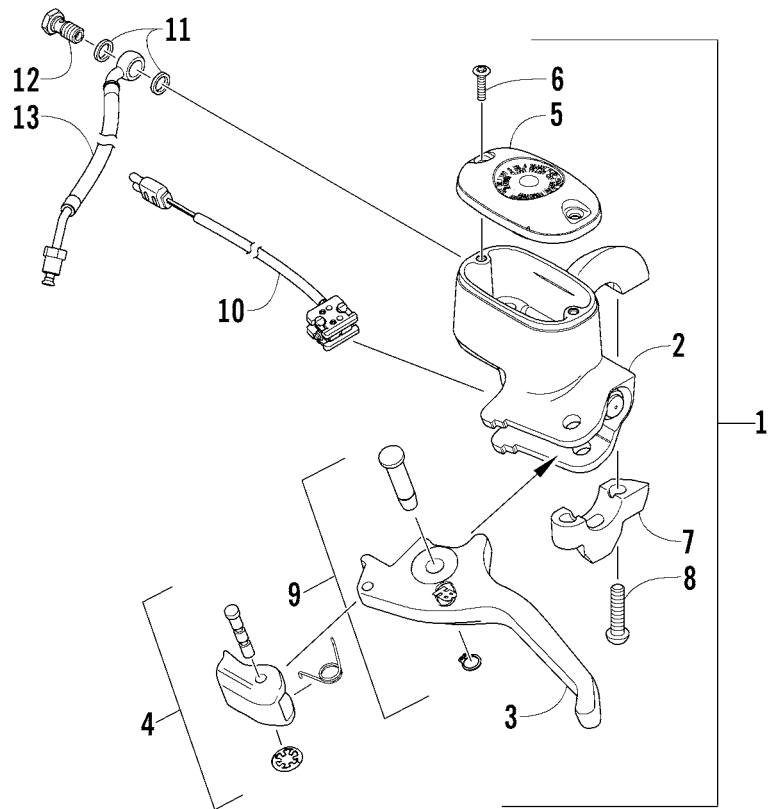
| Ref. | Part No. | Qty. | Description                         | Ref. | Part No. | Qty. | Description                             |
|------|----------|------|-------------------------------------|------|----------|------|---|
| 1    | 1705-178 | 1    | Shaft, Steering                     | 13   | 1705-219 | 1    | Arm, Shaft - Left (inc. one No. 5)      |
| 2    | 0623-954 | 4    | Washer, Thrust                      | 14   | 8005-584 | 2    | Screw, Cap                              |
| 3    | 0623-955 | 2    | Washer, Thrust                      | 15   | 1623-394 | 2    | Screw, Cap                              |
| 4    | 1705-218 | 1    | Arm, Shaft - Right (inc. one No. 5) | 16   | 0605-607 | 2    | Ball Joint, Tie Rod - Left-Hand Thread  |
| 5    | 1623-359 | 2    | ● Bolt, Carriage                    | 17   | 0123-917 | 2    | Nut, Hex - Left-Hand Thread             |
| 6    | 0623-956 | 2    | Snap Ring                           | 18   | 0605-944 | 2    | Tube, Tie Rod - Spindle                 |
| 7    | 2603-721 | 2    | Axle, Steering Link                 | 19   | 0623-294 | 2    | Nut, Hex - Right-Hand Thread            |
| 8    | 1705-224 | 1    | Link, Steering (inc. 9)             | 20   | 8020-226 | 2    | Screw, Cap                              |
| 9    | 0605-807 | 2    | ● Bearing                           | 21   | 0605-788 | 2    | Ball Joint, Tie Rod - Right-Hand Thread |
| 10   | 0623-987 | 2    | Washer                              | 22   | 8047-486 | 2    | Nut, Lock                               |
| 11   | 8047-426 | 2    | Nut, Lock                           | 23   | 3606-799 | 2    | Plug                                    |
| 12   | 1705-184 | 1    | Shaft, Idler                        |      |          |      |   |



HANDLEBAR AND CONTROLS

0742-437 \*Included in Kit

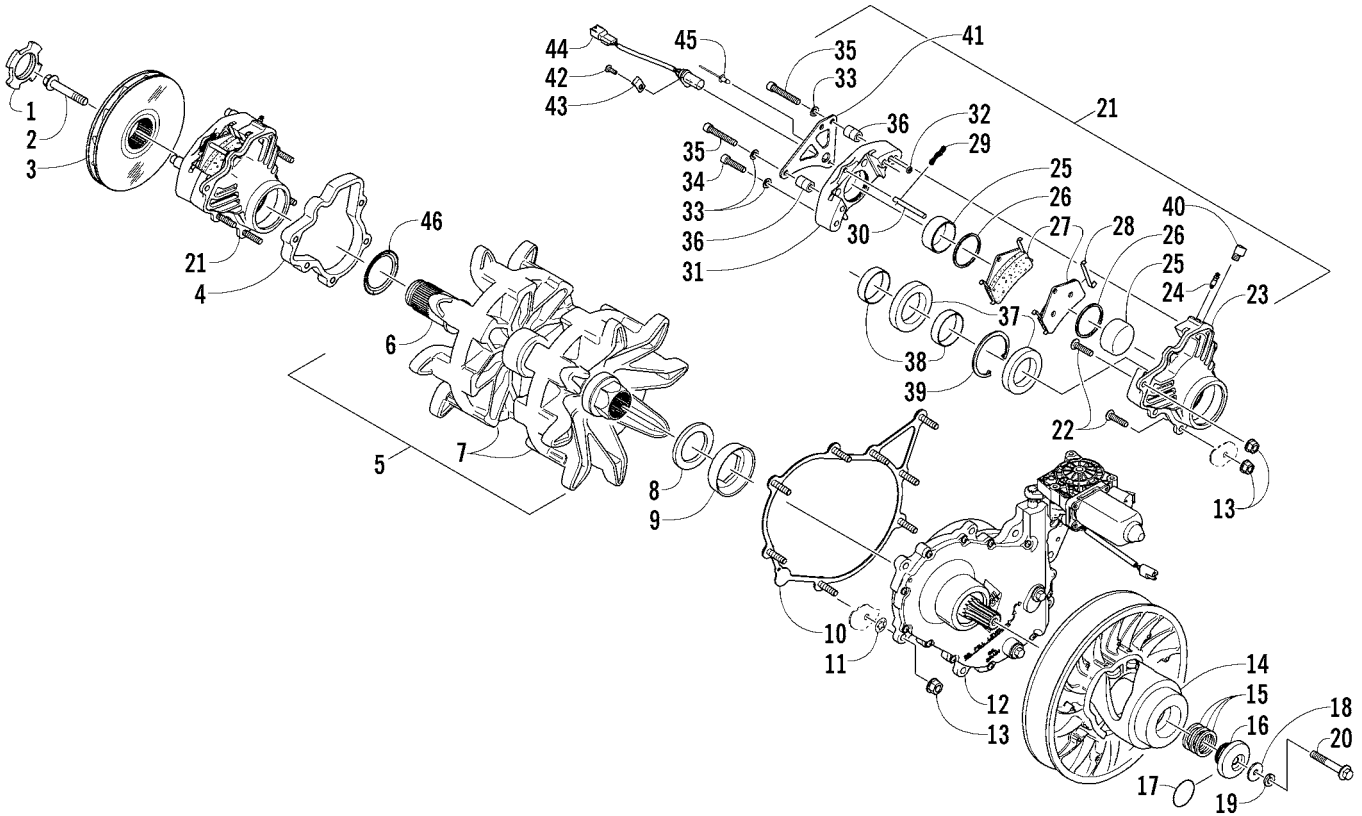
| Ref. | Part No. | Qty. | Description                               | Ref. | Part No. | Qty. | Description                       |
|------|----------|------|---|------|----------|------|-----------------------------------|
| 1    | 0687-198 | 1    | Cable, Throttle                           | 15   | 7611-770 | 1    | Decal, Reverse - Throttle Control |
| 2    | 0123-788 | AR   | Cable Tie - 8 in.                         | 16   | 0609-792 | 1    | Cover, Connector                  |
| 3    | 4606-801 | 2    | Grip, Handlebar                           | 17   | 0609-793 | 1    | Screw, Self-Tapping               |
| 4    | 0609-824 | 1    | Control, Throttle - Rear (inc. 5-10)      | 18   | 0609-791 | 8    | Screw, Machine                    |
| 5    | 0609-859 | 1    | ● Kit, Throttle Lever Mounting (inc. 6-9) | 19   | 1705-127 | 1    | Handlebar                         |
| 6    | *        | 1    | ●● Axle, Lever - Throttle                 | 20   | 1705-149 | 1    | Wrap, Handlebar                   |
| 7    | *        | 2    | ●● Cap, Lever Axle                        | 21   | 1686-452 | 1    | Harness, Handlebar                |
| 8    | *        | 1    | ●● Spacer, Lever Axle                     | 22   | 0123-811 | 1    | Cable Tie - 4 in.                 |
| 9    | 0123-766 | 1    | ●● Nut, Push                              | 23   | 0609-811 | 1    | Control, Dimmer - Rear            |
| 10   | 0609-797 | 1    | ● Lever, Throttle                         | 24   | 0609-805 | 1    | Control, Dimmer - Front           |
| 11   | 0617-248 | 1    | Pad, Insulator                            | 25   | 1623-242 | 2    | Washer, Backing                   |
| 12   | 0609-775 | 1    | Element, Thumbwarmer                      | 26   | 1623-687 | 2    | Screw, Machine                    |
| 13   | 0609-595 | 1    | Clip, Retaining                           | 27   | 0609-822 | 1    | Element, Handwarmer - Right       |
| 14   | 0609-842 | 1    | Control, Throttle - Front                 |      | 0609-823 | 1    | Element, Handwarmer - Left        |



HYDRAULIC BRAKE CONTROL ASSEMBLY

0740-889 \*Not Illustrated

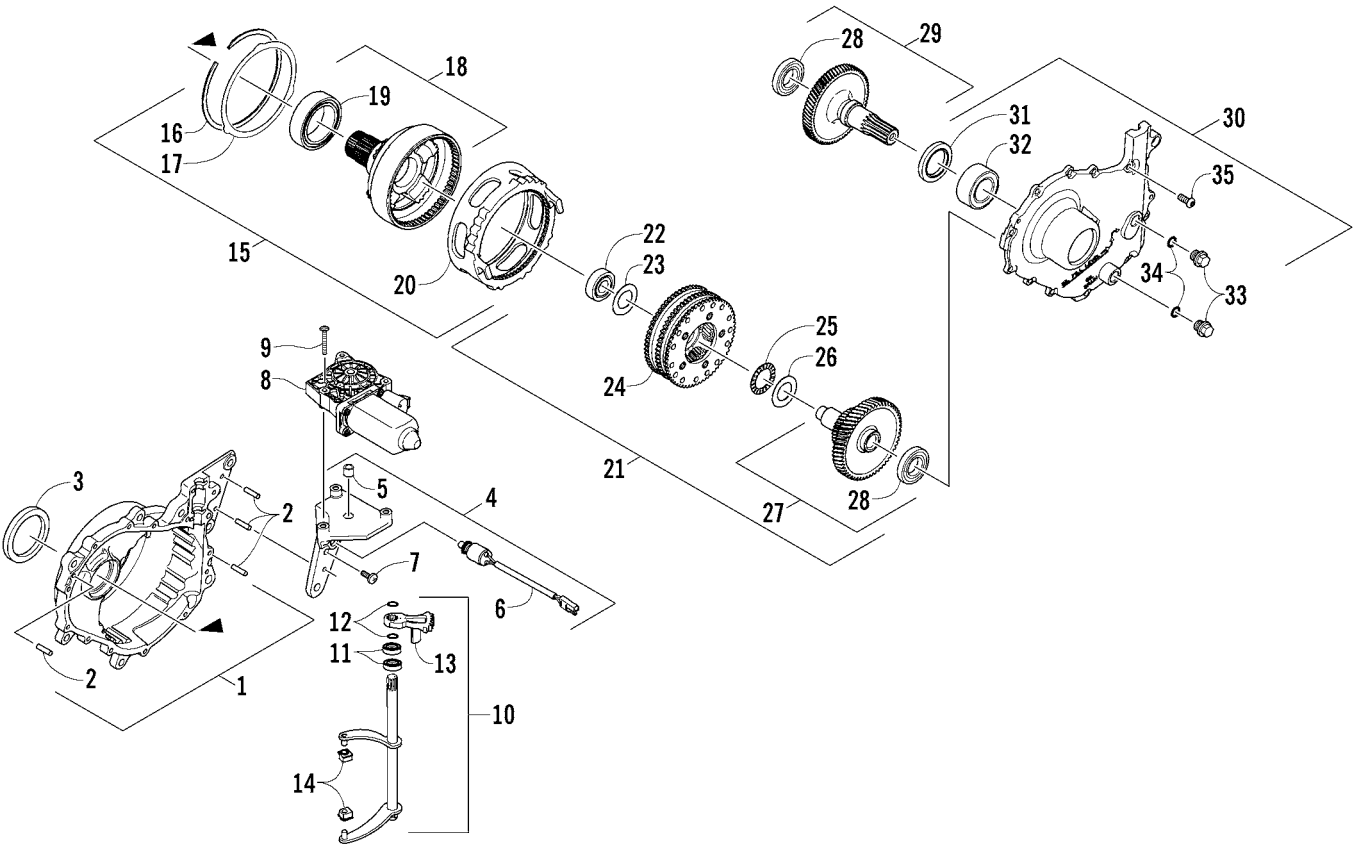
| Ref. | Part No. | Qty. | Description                    | Ref. | Part No. | Qty. | Description                           |
|------|----------|------|--------------------------------|------|----------|------|---------------------------------------|
| 1    | 1602-930 | 1    | Brake Assembly (inc. 2-10)     | 8    | 1602-936 | 2    | ● Screw, Brake Clamp - Kit            |
| 2    | 1602-929 | 1    | ● Master Cylinder - Assembly   | 9    | 1602-937 | 1    | ● Pin, Brake Lever - Kit              |
| 3    | 1602-931 | 1    | ● Lever, Brake (inc. 4)        | 10   | 1602-938 | 1    | ● Switch, Brake                       |
| 4    | 1602-932 | 1    | ● ● Lock, Brake Lever - Kit    | 11   | 0423-178 | 2    | Washer, Crush                         |
| 5    | 1602-933 | 1    | ● Cover, Reservoir             | 12   | 0423-413 | 1    | Bolt, Banjo-Fitting                   |
| 6    | 1602-934 | 2    | ● Screw, Reservoir Cover - Kit | 13   | 2602-009 | 1    | Brakeline, Hydraulic                  |
| 7    | 1602-935 | 1    | ● Clamp, Brake                 | *    | 0436-908 | AR   | Fluid, Brake - Synthetic Race - 12 oz |



# DRIVE TRAIN SHAFT AND BRAKE ASSEMBLIES

0742-438 \*Not a Service Part

| Ref. | Part No.        | Qty. | Description                            | Ref. | Part No.        | Qty. | Description                          |
|------|-----------------|------|--|------|-----------------|------|--------------------------------------|
| 1    | 1602-957        | 1    | Nut, Retaining                         | 23   | *               | 1    | ● Housing                            |
| 2    | 1623-461        | 1    | Screw, Cap                             | 24   | 1602-458        | 1    | ● Fitting, Bleed                     |
| 3    | 1602-656        | 1    | Disc, Brake                            | 25   | 1602-461        | 2    | ● Piston                             |
| 4    | 1602-497        | 1    | Spacer, Brake Caliper                  | 26   | 1602-669        | 2    | ● O-Ring                             |
| 5    | <u>0728-170</u> | 1    | Track, Drive - Assembly (inc. 6-7)     | 27   | 0702-563        | 1    | ● Pad, Brake - Set (inc. 28-29)      |
| 6    | <u>0702-940</u> | 1    | ● Driveshaft                           | 28   | 1602-466        | 4    | ● ● Clip, Anti-Rattle                |
| 7    | 1602-592        | 2    | ● Sprocket, Drive                      | 29   | 1602-467        | 1    | ● ● Clip, Hairpin                    |
| 8    | 2602-068        | 1    | Spacer                                 | 30   | 1602-464        | 1    | ● Pin, Retaining - Brake Pad         |
| 9    | 1602-984        | 1    | Seal                                   | 31   | *               | 1    | ● Housing                            |
| 10   | 0702-882        | 1    | Plate, Mounting - Gearcase             | 32   | 0602-729        | 1    | ● O-Ring, Housing                    |
| 11   | 1623-355        | 8    | Nut, Push                              | 33   | 0402-165        | 4    | ● Washer                             |
| 12   | <u>0702-955</u> | 1    | Gearcase Assembly                      | 34   | 1602-671        | 2    | ● Screw, Cap                         |
| 13   | 8047-426        | 13   | Nut, Lock                              | 35   | 1602-670        | 2    | ● Screw, Cap                         |
| 14   | <u>0726-274</u> | 1    | Clutch, Driven                         | 36   | <u>2602-132</u> | 2    | ● Spacer, Speedometer Bracket        |
| 15   | 0648-714        | AR   | Washer                                 | 37   | <u>2602-131</u> | 2    | ● Bearing                            |
|      | 0648-715        | AR   | Washer                                 | 38   | 1602-463        | 2    | ● Sleeve, Driveshaft                 |
|      | 0648-716        | AR   | Washer                                 | 39   | 1602-456        | 1    | ● Ring, Retaining                    |
| 16   | 0648-762        | 1    | Adjuster, Sheave                       | 40   | 0602-590        | 1    | ● Fitting, Adapter                   |
| 17   | 0648-441        | 1    | O-Ring                                 | 41   | 4606-309        | 1    | Plate, Mounting - Speedometer Sensor |
| 18   | 8050-277        | 1    | Washer                                 | 42   | 8468-617        | 1    | Screw, Machine                       |
| 19   | 8051-272        | 1    | Washer, Lock                           | 43   | 1623-676        | 1    | Clamp, Speedometer Sensor            |
| 20   | 1623-572        | 1    | Screw, Cap                             | 44   | 0630-207        | 1    | Sensor, Speedometer                  |
| 21   | <u>1702-014</u> | 1    | Caliper, Brake - Assembly (inc. 22-40) | 45   | 8060-602        | 1    | Rivet                                |
| 22   | 1623-360        | 5    | ● Bolt, Carriage - Ribbed              | 46   | 2602-076        | 1    | Shield, Bearing                      |

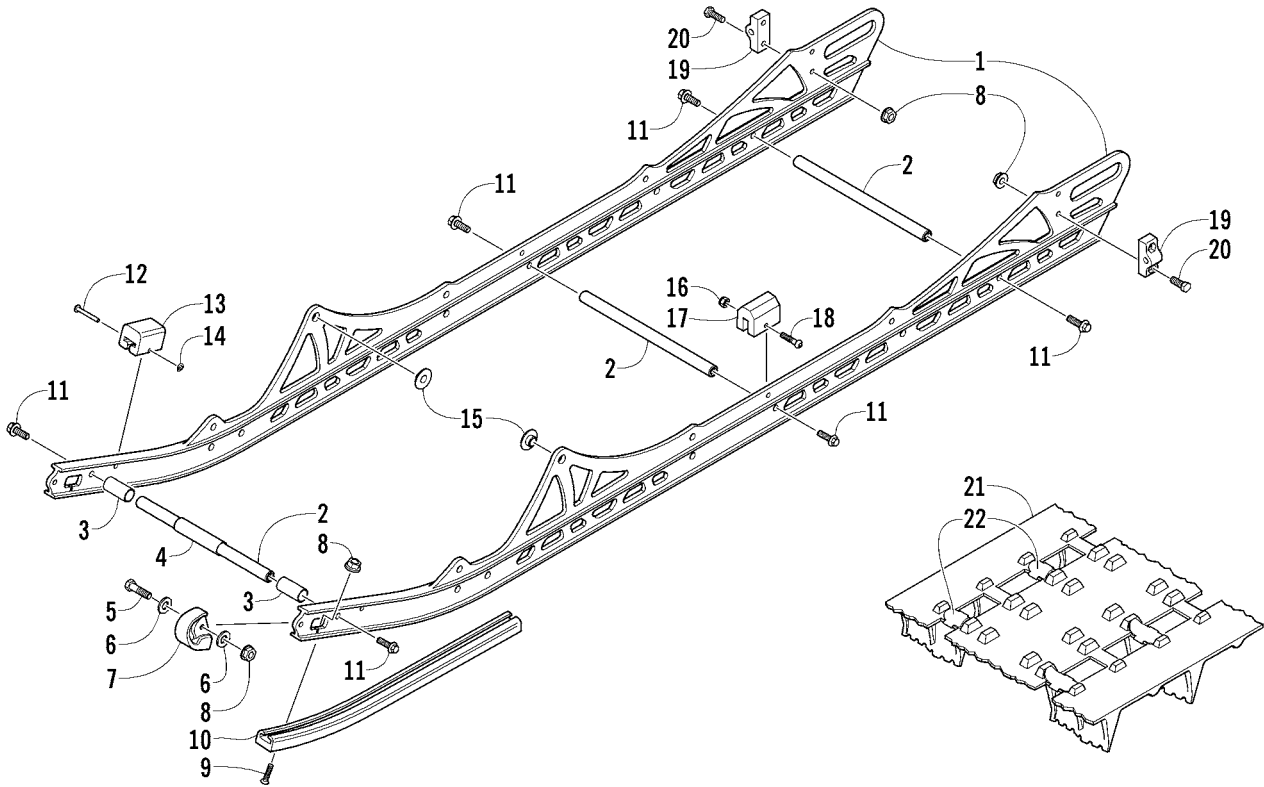


# GEARCASE ASSEMBLY

(Complete Gearcase Assembly p/n 0702-955)

0742-439 \*Not a Service Part \*\*Not Illustrated

| Ref. | Part No.        | Qty. | Description  | Ref. | Part No.        | Qty. | Description  |
|------|-----------------|------|--|------|-----------------|------|--|
| 1    | <u>0702-951</u> | 1    | Gearcase (inc. 2-3)                                | 19   | *               | 1    | ● ● Bearing  |
| 2    | 1602-915        | 4    | ● Pin, Dowel                                       | 20   | 2602-063        | 1    | ● Slider   |
| 3    | <u>2602-172</u> | 1    | ● Seal, Oil  | 21   | 0702-779        | 1    | Gear, Transfer - 63T/34T - Assembly<br>(inc. 22-27 and one No. 28) |
| 4    | 0702-891        | 1    | Bracket, Mounting - Reverse Actuator<br>(inc. 5-6) | 22   | 1602-842        | 1    | ● Bearing  |
| 5    | 1602-916        | 1    | ● Bearing  | 23   | 2602-058        | 1    | ● Washer, Spacer   |
| 6    | 0630-228        | 1    | ● Switch, Alarm                                    | 24   | 0702-867        | 1    | ● Gear, Planetary - Assembly                                       |
| 7    | 0423-538        | 1    | Screw, Machine                                     | 25   | 1602-840        | 1    | ● Bearing, Thrust  |
| 8    | 0630-220        | 1    | Actuator, Reverse                                  | 26   | 1602-841        | 1    | ● Washer, Thrust   |
| 9    | 8468-536        | 3    | Screw, Machine                                     | 27   | 0702-778        | 1    | ● Gear Transfer (inc. one No. 28)                                  |
| 10   | <u>1702-003</u> | 1    | Fork, Shift - Assembly (inc. 11-13)                | 28   | 1602-981        | 2    | ● ● Bearing  |
| 11   | 2602-013        | 2    | ● Seal, Oil  | 29   | 0702-688        | 1    | Shaft, Input - 57T (inc. one No. 28)                               |
| 12   | 2602-057        | 2    | ● Ring, Retaining                                  | 30   | <u>0702-953</u> | 1    | Cover, Gearcase (inc. 31-34)                                       |
| 13   | 2602-007        | 1    | ● Arm, Shift Fork                                  | 31   | <u>2602-160</u> | 1    | ● Seal, Oil  |
| 14   | <u>2602-127</u> | 2    | Block, Slider                                      | 32   | 1602-982        | 1    | ● Bearing  |
| 15   | 0702-910        | 1    | Slider Assembly (inc. 16-20)                       | 33   | <u>2602-099</u> | 2    | ● Plug, Gearcase   |
| 16   | 2602-040        | 1    | ● Ring, Retaining                                  | 34   | 1602-213        | 2    | ● O-Ring   |
| 17   | 2602-064        | 1    | ● Washer, Thrust                                   | 35   | 1623-683        | 13   | Screw, Machine   |
| 18   | *               | 1    | ● Shaft, Output (inc. 19)                          | **   | 4639-628        | AR   | Fluid, Gearcase - 12 oz  |



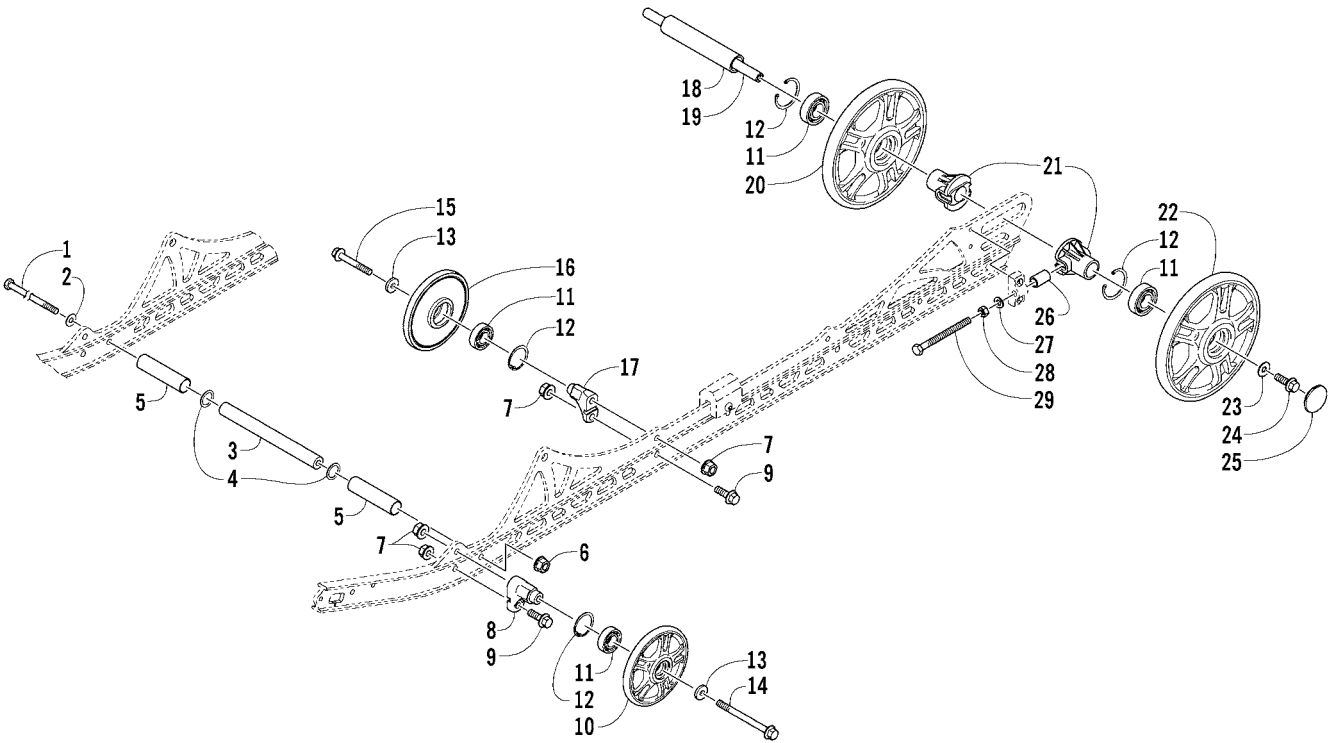
# SLIDE RAIL AND TRACK ASSEMBLY

(Complete Skid Frame Assembly p/n 1704-639; p/n 1704-640 Orange 153 /Sno Pro; p/n 1704-641 Black 162; p/n 1704-642 Orange 162; p/n 1704-726 Nightfire Sno Pro)

0742-380

| Ref. | Part No.            | Qty. | Description  | Ref. | Part No. | Qty. | Description                                 |
|------|---------------------|------|--|------|----------|------|---|
| 1    | <del>3604-237</del> | 2    | Rail, Formed - Stamped                             | 11   | 1623-502 | 8    | Screw, Cap                                  |
|      | <del>3604-238</del> | 2    | Rail, Formed - Stamped (162)                       | 12   | 0123-767 | 2    | Rivet, Solid                                |
|      | <del>1704-714</del> | 2    | Rail, Formed - Stamped - Black (Nightfire Sno Pro) | 13   | 0104-631 | 2    | Pad, Shock                                  |
| 2    | 0604-426            | 4    | Support, Rail                                      | 14   | 0123-766 | 2    | Nut, Push                                   |
|      | <del>1604-737</del> | 4    | Support, Rail - Black (Nightfire Sno Pro)          | 15   | 2604-733 | 2    | Insert, Rail                                |
| 3    | 2604-659            | 2    | Spacer   | 16   | 8041-246 | 2    | Nut, Lock                                   |
|      | <del>1704-716</del> | 2    | Spacer - Black (Nightfire Sno Pro)                 | 17   | 1604-429 | 2    | Pad, Shock                                  |
| 4    | 2604-660            | 1    | Spacer   | 18   | 8017-405 | 2    | Screw, Machine                              |
|      | <del>1704-717</del> | 1    | Spacer - Black (Nightfire Sno Pro)                 | 19   | 0704-352 | 2    | Adjuster, Track                             |
| 5    | 8002-043            | 2    | Screw, Cap   |      | 0704-503 | 2    | Adjuster, Track - Black (Nightfire Sno Pro) |
| 6    | 8050-217            | 4    | Washer   | 20   | 8002-042 | 4    | Screw, Cap                                  |
| 7    | 3604-003            | 2    | End Cap, Slide Rail                                | 21   | 1602-995 | 1    | Track Assembly (inc. 22)                    |
| 8    | 8047-366            | 8    | Nut, Lock  |      | 1602-996 | 1    | Track Assembly (inc. 22) (162)              |
| 9    | 0123-859            | 2    | Screw, Machine                                     | 22   | 2602-181 | 52   | ● Clip, Guide                               |
| 10   | 2604-798            | 2    | Wearstrip, Slide Rail                              |      | 2602-181 | 54   | ● Clip, Guide (162)                         |
|      | 2604-799            | 2    | Wearstrip, Slide Rail (162)                        |      |          |      |   |



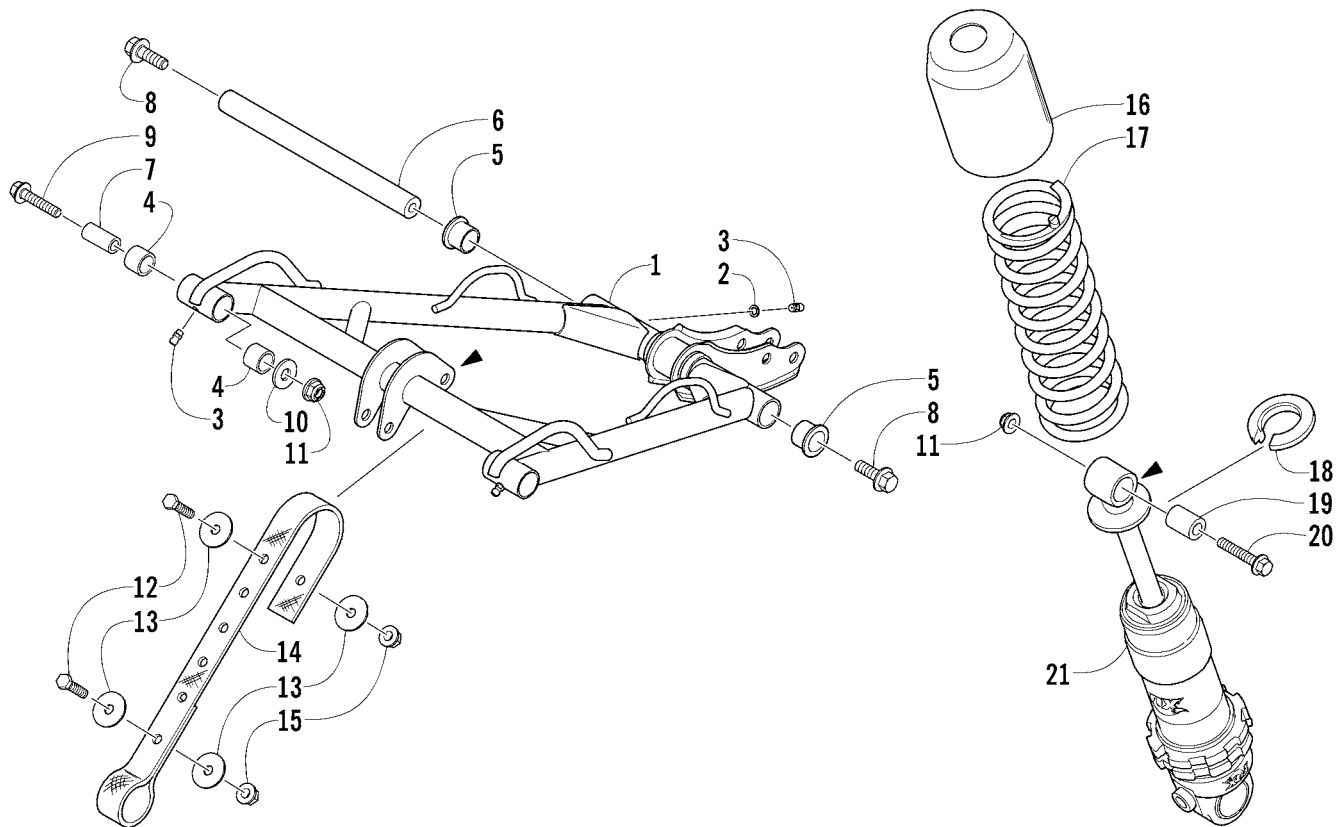


# IDLER WHEEL ASSEMBLY

0742-440

| Ref. | Part No.        | Qty. | Description   | Ref. | Part No.        | Qty. | Description   |
|------|-----------------|------|---|------|-----------------|------|---|
| 1    | 1623-037        | 1    | Screw, Cap  | 16   | 3604-039        | 2    | Wheel, Idler (inc. 11-12)                             |
| 2    | 0623-439        | 1    | Washer  | 17   | 3604-004        | 1    | Block, Mounting - Idler Wheel                         |
| 3    | 3604-080        | 1    | Axle  | 18   | 1604-810        | 1    | Spacer, Rear Wheel                                    |
| 4    | 0623-912        | 2    | Washer  |      | <u>1704-725</u> | 1    | Spacer, Rear Wheel - Black (Nightfire Sno Pro)        |
| 5    | 3604-083        | 2    | Spacer, Front Arm Shock                               | 19   | 2604-283        | 1    | Axle, Rear Wheel                                      |
|      | <u>1704-718</u> | 2    | Spacer, Front Arm Shock - Black (Nightfire Sno Pro)   | 20   | 3604-073        | 2    | Wheel, Idler (inc. 11-12)                             |
| 6    | 8047-490        | 1    | Nut, Lock   | 21   | 1704-489        | 4    | Bushing, Adjuster                                     |
| 7    | 8047-486        | 8    | Nut, Lock   | 22   | 3604-075        | 2    | Wheel, Idler - Green (inc. 11-12)                     |
| 8    | 3604-207        | 2    | Block, Mounting - Idler Wheel                         |      | 3604-191        | 2    | Wheel, Idler - Orange (inc. 11-12) (Orange/Sno Pro)   |
| 9    | 8020-224        | 4    | Screw, Cap  |      | 3604-073        | 2    | Wheel, Idler - Black (inc. 11-12) (Nightfire Sno Pro) |
| 10   | 3604-047        | 2    | Wheel, Idler - Green (inc. 11-12)                     | 23   | 0623-664        | 2    | Washer  |
|      | 3604-048        | 2    | Wheel, Idler - Orange (inc. 11-12) (Orange/Sno Pro)   | 24   | 1623-248        | 2    | Screw, Cap  |
|      | <u>3604-386</u> | 2    | Wheel, Idler - Black (inc. 11-12) (Nightfire Sno Pro) | 25   | 1604-952        | 2    | Cap, Idler Wheel                                      |
| 11   | 3604-033        | 8    | ● Bearing   | 26   | 1604-139        | 2    | Sleeve  |
| 12   | 0623-946        | 8    | ● Ring, Retaining                                     | 27   | 8051-277        | 2    | Washer, Lock  |
| 13   | 8050-282        | 4    | Washer  | 28   | 8042-486        | 2    | Nut   |
| 14   | 8020-230        | 2    | Screw, Cap  | 29   | 0623-123        | 2    | Screw, Cap  |
| 15   | 8020-232        | 2    | Screw, Cap  |      |                 |      |   |

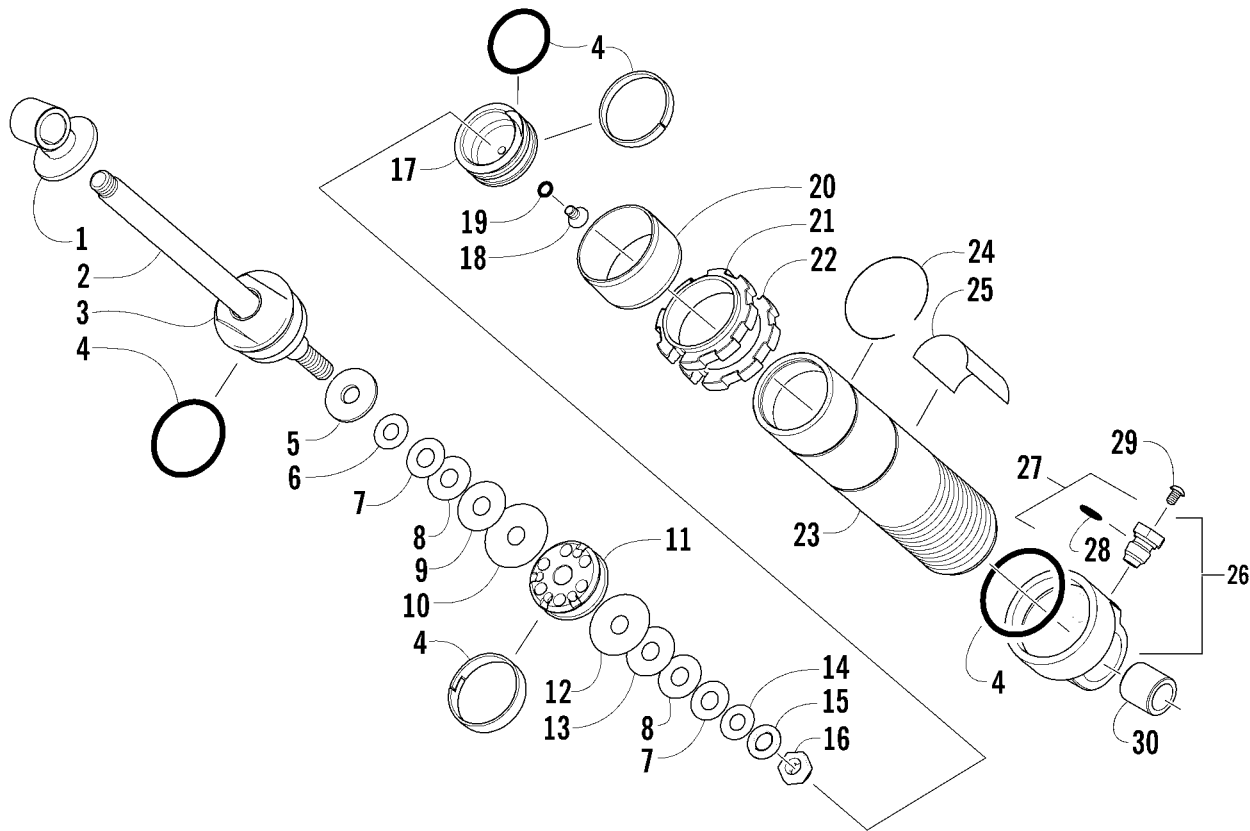




## REAR SUSPENSION FRONT ARM ASSEMBLY

0742-334

| Ref. | Part No.        | Qty. | Description   | Ref. | Part No. | Qty. | Description                 |
|------|-----------------|------|---|------|----------|------|-----------------------------|
| 1    | <u>1704-644</u> | 1    | Arm, Front Suspension - Green (inc. 2-5)                        | 10   | 0114-197 | 2    | Washer                      |
|      | <u>1704-598</u> | 1    | Arm, Front Suspension - Orange (inc. 2-5)<br>(Orange/Sno Pro)   | 11   | 8047-486 | 3    | Nut, Lock                   |
|      | <u>1704-720</u> | 1    | Arm, Front Suspension - Black (inc. 2-5)<br>(Nightfire Sno Pro) | 12   | 8002-043 | 4    | Screw, Cap                  |
| 2    | 1623-011        | 1    | ● Washer, Grease Fitting  | 13   | 0623-184 | 8    | Washer                      |
| 3    | 1623-010        | 3    | ● Fitting, Grease - Self-Tapping                                | 14   | 2604-657 | 2    | Strap, Limiter              |
| 4    | 0604-889        | 4    | ● Bushing, Front Arm  | 15   | 8047-366 | 4    | Nut, Lock                   |
| 5    | 3604-028        | 2    | ● Bushing, Flared   | 16   | 0604-590 | 1    | Cover, Shock                |
| 6    | 2604-591        | 1    | Axle, Aluminum  | 17   | 1704-461 | 1    | Spring, Compression - Black |
| 7    | 1604-162        | 2    | Axle, Inner Carriage  | 18   | 1603-890 | 1    | Retainer, Spring            |
| 8    | 1623-248        | 2    | Screw, Cap  | 19   | 1603-531 | 1    | Axle, Serrated              |
| 9    | 8020-229        | 2    | Screw, Cap  | 20   | 8020-226 | 1    | Screw, Cap                  |
|      |                 |      |   | 21   | 1704-351 | 1    | Shock Absorber, Front Arm   |

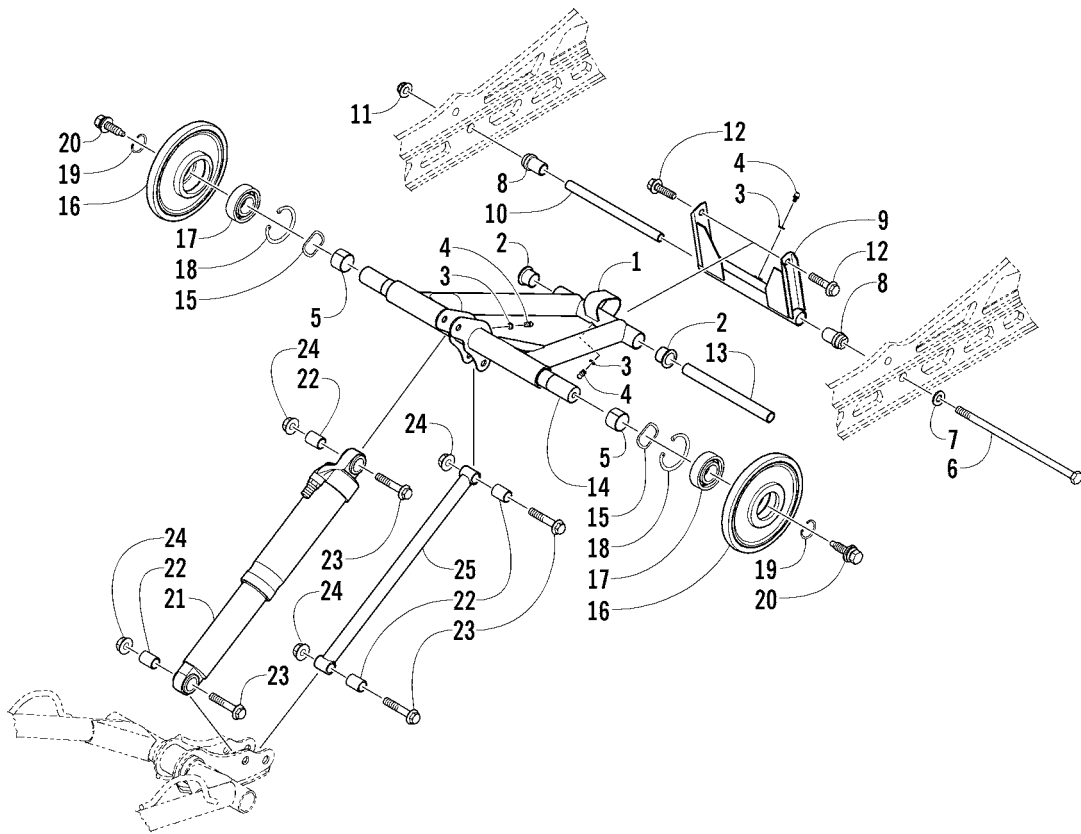


# REAR SUSPENSION FRONT ARM SHOCK ABSORBER

(Complete Shock Absorber p/n 1704-351)

0741-656 \*Not Illustrated

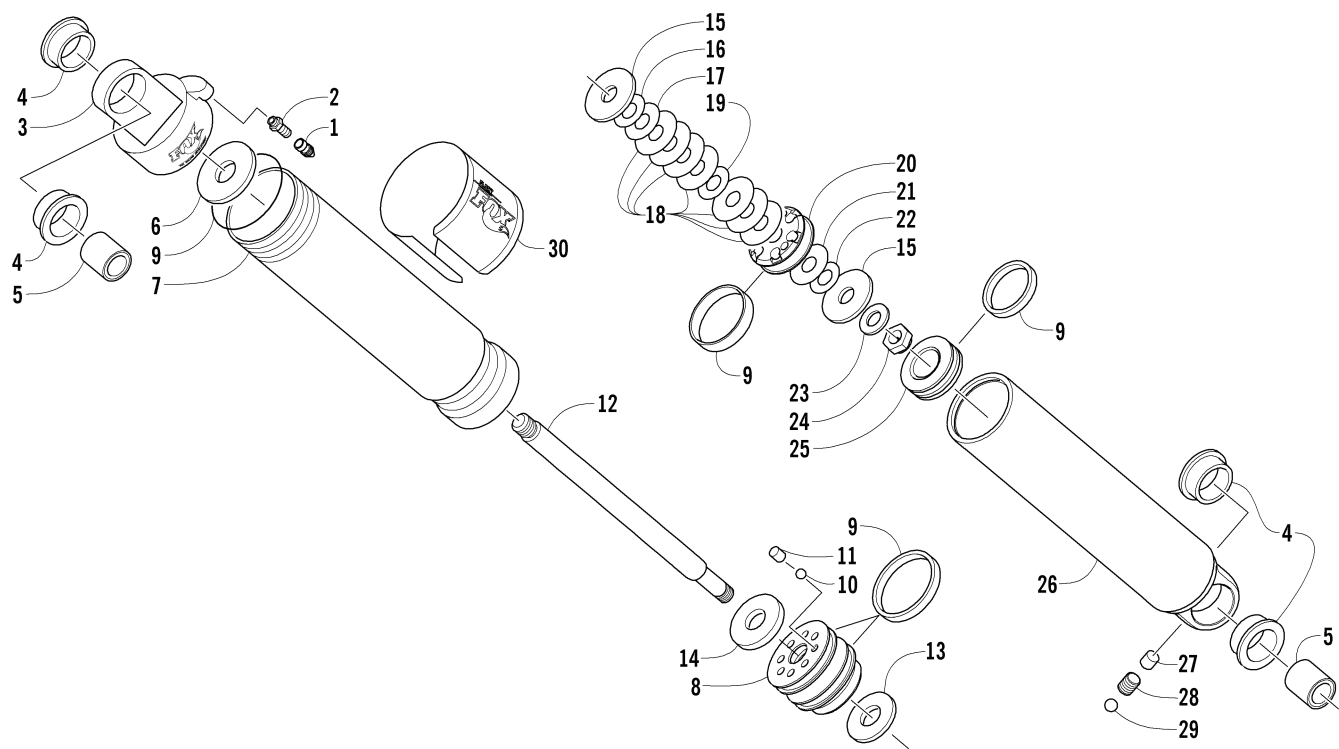
| Ref. | Part No. | Qty. | Description                 | Ref. | Part No. | Qty. | Description                 |
|------|----------|------|-----------------------------|------|----------|------|-----------------------------|
| 1    | 0604-625 | 1    | Eyelet, Shock               | 17   | 2604-816 | 1    | Piston, Floating - Assembly |
| 2    | 2604-861 | 1    | Rod, Shock                  | 18   | 1604-316 | 1    | Screw, Relief (inc. 19)     |
| 3    | 2604-812 | 1    | Bearing - Assembly          | 19   | 1604-425 | 1    | ● O-Ring                    |
| 4    | 2604-815 | 1    | Kit, Seal/Rebuild           | 20   | 2603-246 | 1    | Sleeve, Wear                |
| 5    | 0603-540 | 1    | Washer, Top Out             | 21   | 2604-840 | 1    | Nut, Spring Adjuster        |
| 6    | 0603-334 | 1    | Valve, 0.800 x 0.008 in.    | 22   | 2604-841 | 1    | Nut, Locking - Adjuster     |
| 7    | 0603-338 | 2    | Valve, 0.900 x 0.010 in.    | 23   | 2604-862 | 1    | Body, Shock                 |
| 8    | 0603-881 | 2    | Valve, 1.000 x 0.012 in.    | 24   | 2603-245 | 2    | Retainer, Wear Sleeve       |
| 9    | 0603-882 | 1    | Valve, 1.100 x 0.012 in.    | 25   | 2603-475 | 1    | Decal, Shock                |
| 10   | 0603-891 | 1    | Valve, 1.300 x 0.012 in.    | 26   | 2604-817 | 1    | End Cap, Shock (inc. 27-28) |
| 11   | 0603-206 | 1    | Piston, 0.059 in. - Orifice | 27   | 0703-341 | 1    | ● Valve, Pressure (inc. 28) |
| 12   | 0603-347 | 1    | Valve, 1.250 x 0.010 in.    | 28   | 1604-318 | 1    | ●● O-Ring, Valve            |
| 13   | 0603-344 | 1    | Valve, 1.100 x 0.010 in.    | 29   | 0624-097 | 1    | Screw, Valve                |
| 14   | 0603-335 | 1    | Valve, 0.800 x 0.010 in.    | 30   | 2604-415 | 1    | Bushing, Shock              |
| 15   | 0603-389 | 1    | Washer, Backup              | *    | 4639-368 | AR   | Oil, Gas Shock - 1 qt       |
| 16   | 0603-301 | 1    | Nut, Lock                   |      |          |      |                             |



# REAR SUSPENSION REAR ARM ASSEMBLY

0742-413

| Ref. | Part No.        | Qty. | Description   | Ref. | Part No.        | Qty. | Description                                     |
|------|-----------------|------|---|------|-----------------|------|---|
| 1    | <u>1704-646</u> | 1    | Arm, Idler - Green<br>(inc. 2, two No. 3-4, and 5)                        | 10   | 2604-663        | 1    | Tube, Axle                                      |
|      | <u>1704-603</u> | 1    | Arm, Idler - Orange<br>(inc. 2, two No. 3-4, and 5)<br>(Orange/Sno Pro)   | 11   | 8047-490        | 1    | Nut, Lock                                       |
|      | <u>1704-722</u> | 1    | Arm, Idler - Black<br>(inc. 2, two No. 3-4, and 5)<br>(Nightfire Sno Pro) | 12   | 1623-503        | 2    | Screw, Cap                                      |
| 2    | 3604-028        | 2    | ● Bushing, Flared   | 13   | 2604-176        | 1    | Axle, Aluminum                                  |
| 3    | 1623-011        | 3    | ● Washer, Grease Fitting  | 14   | <u>3604-254</u> | 1    | Axle, Inner Carriage                            |
| 4    | 1623-010        | 3    | ● Fitting, Grease - Self-Tapping  | 15   | <u>1623-692</u> | 2    | Washer, Wave                                    |
| 5    | <u>2604-852</u> | 2    | ● Bearing   | 16   | 2604-699        | 2    | Wheel, Idler (inc. 17-18)                       |
| 6    | 1623-037        | 1    | Screw, Cap  | 17   | 0107-598        | 2    | ● Bearing                                       |
| 7    | 0623-439        | 1    | Washer  | 18   | 0123-798        | 2    | ● Ring, Retaining                               |
| 8    | 2604-664        | 2    | Bushing, Rear Arm   | 19   | <u>1623-690</u> | 2    | Ring, Retaining                                 |
| 9    | <u>1704-648</u> | 1    | Arm, Rear - Green (inc. one No. 3-4)                                      | 20   | 1623-166        | 2    | Screw, Cap                                      |
|      | <u>1704-605</u> | 1    | Arm, Rear - Orange (inc. one No. 3-4)<br>(Orange/Sno Pro)                 | 21   | <u>1704-606</u> | 1    | Shock Absorber - Rear Arm                       |
|      | 0704-976        | 1    | Arm, Rear - Black (inc. one No. 3-4)<br>(Nightfire Sno Pro)               | 22   | 1604-139        | 4    | Sleeve, Shock                                   |
|      |                 |      |   | 23   | 8020-226        | 4    | Screw, Cap                                      |
|      |                 |      |   | 24   | 8047-486        | 4    | Nut, Lock                                       |
|      |                 |      |   | 25   | <u>1704-683</u> | 1    | Link, Rear Shock - Green                        |
|      |                 |      |   |      | <u>1704-684</u> | 1    | Link, Rear Shock - Orange<br>(Orange/Sno Pro)   |
|      |                 |      |   |      | <u>1704-724</u> | 1    | Link, Rear Shock - Black<br>(Nightfire Sno Pro) |

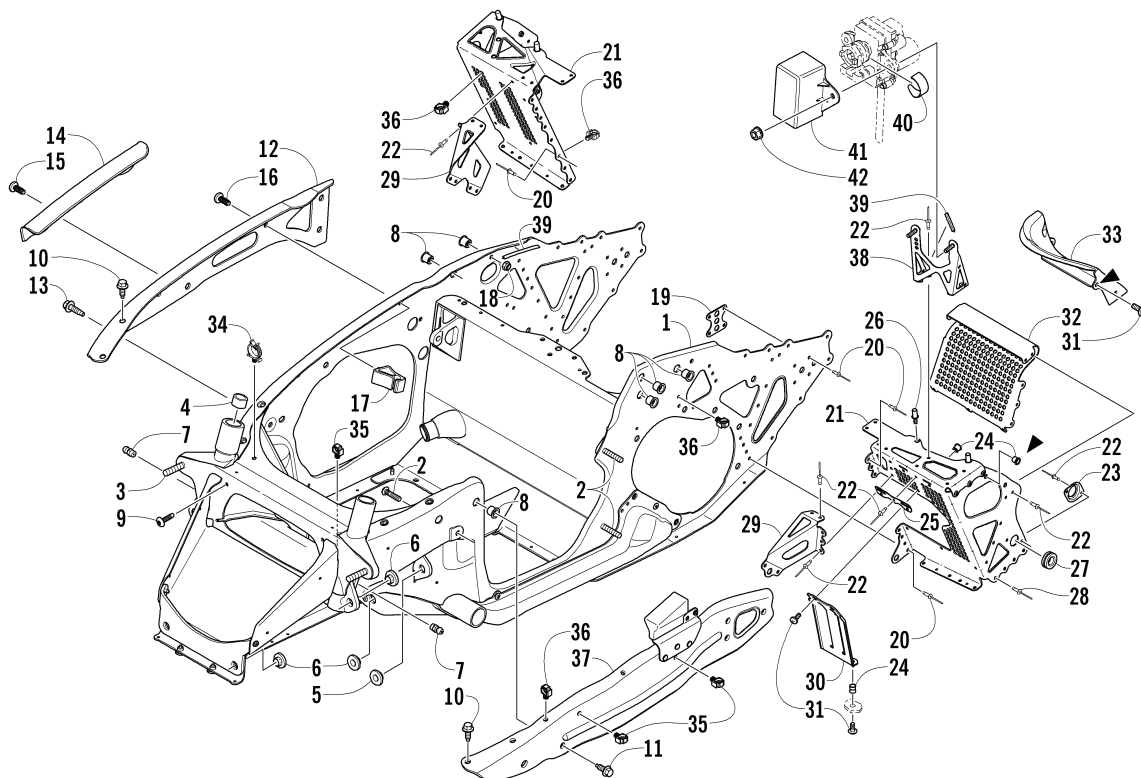


REAR SUSPENSION REAR ARM SHOCK ABSORBER

(Complete Shock Absorber p/n 1704-606)

0742-221 \*Bearing Assembly Rebuild Kit (p/n 2603-498) \*\*Not Illustrated

| Ref. | Part No. | Qty. | Description                | Ref. | Part No. | Qty. | Description                 |
|------|----------|------|----------------------------|------|----------|------|-----------------------------|
| 1    | 2603-327 | 1    | Cap, Air Valve             | 17   | 0603-341 | 1    | Valve, 1.000 x 0.010 in.    |
| 2    | 2603-511 | 1    | Valve, Air                 | 18   | 0603-348 | 7    | Valve, 1.300 x 0.006 in.    |
| 3    | 3604-319 | 1    | End Cap, Shock             | 19   | 0603-880 | 1    | Valve, 0.900 x 0.012 in.    |
| 4    | 1604-222 | 4    | Bushing, Shock             | 20   | 1603-314 | 1    | Piston, 0.039 in. - Orifice |
| 5    | 2604-223 | 2    | Sleeve, Shock              | 21   | 0603-346 | 1    | Valve, 1.250 x 0.008 in.    |
| 6    | 2603-613 | 1    | Spacer, Air Volume Reducer | 22   | 0603-334 | 1    | Valve, 0.800 x 0.008 in.    |
| 7    | 2603-665 | 1    | Body, Shock - Upper        | 23   | 0603-389 | 1    | Washer, Backup              |
| 8    | 2603-333 | 1    | Bearing - Assembly*        | 24   | 0603-301 | 1    | Nut, Cap                    |
| 9    | 2604-796 | 1    | Kit, Seal/Cap Rebuild      | 25   | 2603-417 | 1    | Piston, Floating            |
| 10   | 1604-315 | 1    | Ball, Bleed                | 26   | 2603-335 | 1    | Body, Shock - Lower         |
| 11   | 1603-940 | 1    | Screw                      | 27   | 1604-428 | 1    | Plug, Rubber - Valve        |
| 12   | 3604-320 | 1    | Rod, Shock                 | 28   | 2603-338 | 1    | Screw, Set                  |
| 13   | 0603-386 | 1    | Bumper, Internal - Top Out | 29   | 2603-337 | 1    | Ball, Air Valve             |
| 14   | 3604-005 | 1    | Spacer                     | 30   | 2603-610 | 1    | Decal, Shock                |
| 15   | 0603-540 | 2    | Washer, Top Out            | **   | 4639-368 | AR   | Oil, Shock - 1 qt           |
| 16   | 0603-338 | 1    | Valve, 0.900 x 0.010 in.   | **   | 4639-012 | AR   | Fluid, Float Shock - 8 oz   |

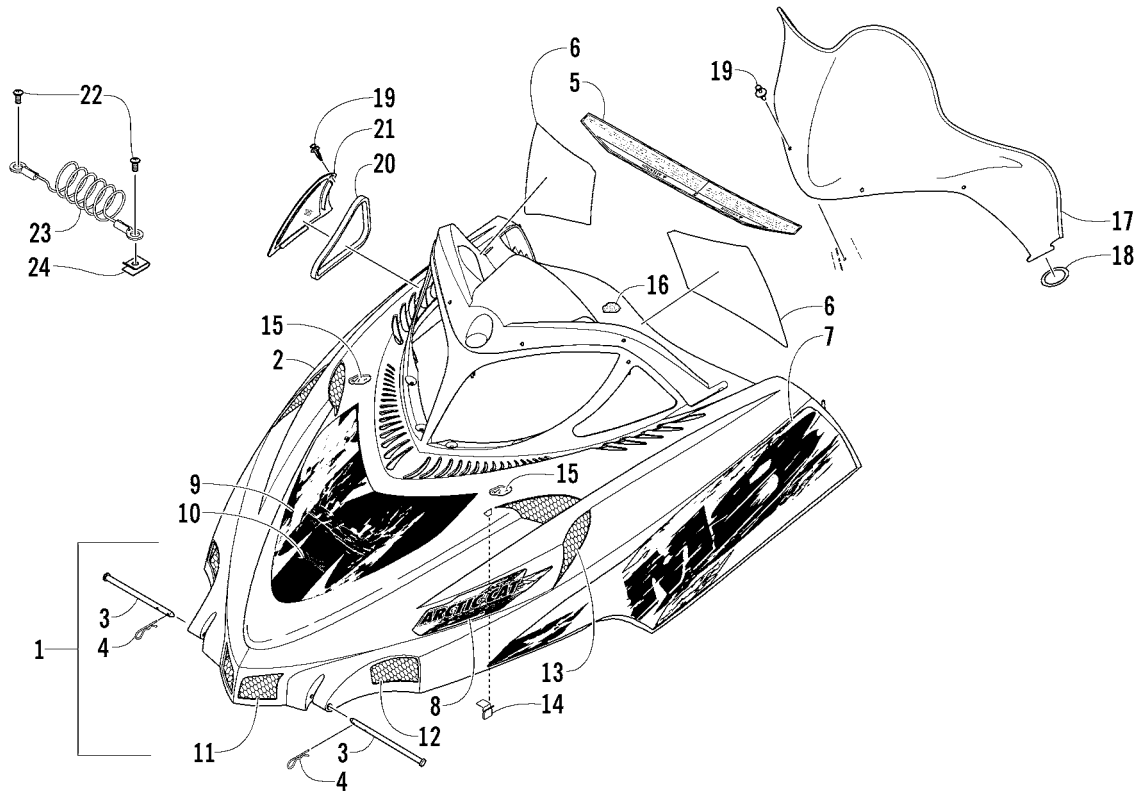


## FRONT FRAME AND FOOTREST ASSEMBLY

(Complete Chassis Assembly p/n 1707-230; p/n 1707-231 162; p/n 1707-257 Nightfire Sno Pro)

0742-797

| Ref. | Part No.        | Qty. | Description   | Ref. | Part No.        | Qty. | Description  |
|------|-----------------|------|---|------|-----------------|------|--|
| 1    | <u>1707-178</u> | 1    | Chassis - Assembly (inc. 2-8)                                       |      | 3706-335        | 2    | ● Plate, Retaining - Black<br>(Nightfire Sno Pro)                        |
|      | <u>1707-228</u> | 1    | Chassis - Assembly (inc. 2-8)<br>(Nightfire Sno Pro)                | 24   | 1623-657        | 6    | ● Insert   |
| 2    | 1623-359        | 3    | ● Bolt, Carriage - Ribbed   | 25   | 0607-835        | 1    | ● Plate, Mounting - Belt Guard   |
| 3    | 1623-019        | 2    | ● Bolt, Carriage - Ribbed   | 26   | <u>1623-706</u> | 4    | ● Stud, Captive  |
| 4    | 0675-161        | 4    | ● Bearing   | 27   | 1623-529        | 2    | Grommet  |
| 5    | 0607-656        | 2    | ● Bushing, Upper A-Arm Mount  | 28   | 1623-264        | 8    | Rivet  |
| 6    | 0607-657        | 6    | ● Bushing, Lower A-Arm Mount  | 29   | 3606-904        | 1    | Bracket, Support - Footrest - Right                                      |
| 7    | 1623-010        | 2    | ● Fitting, Grease   |      | 4606-353        | 1    | Bracket, Support - Footrest - Left                                       |
| 8    | 0623-581        | 8    | ● Insert  |      | 3706-336        | 1    | Bracket, Support - Footrest - Right - Black<br>(Nightfire Sno Pro)       |
| 9    | 1623-022        | 2    | Screw   |      | 3706-692        | 1    | Bracket, Support - Footrest - Left - Black<br>(Nightfire Sno Pro)        |
| 10   | 1623-480        | 4    | Screw, Cap  | 30   | 3706-673        | 1    | Panel, Close-Out - Footrest<br>(inc. two No. 24)                         |
| 11   | 1623-481        | 3    | Screw, Cap  | 31   | 1623-498        | 12   | Screw, Machine   |
| 12   | 4606-200        | 1    | Brace, Side Plate - Right   | 32   | 4606-742        | 1    | Bracket, Support - Footrest - Lower Right                                |
|      | 3706-450        | 1    | Brace, Side Plate - Right - Black<br>(Nightfire Sno Pro)            |      | 4606-743        | 1    | Bracket, Support - Footrest - Lower Left                                 |
| 13   | 1623-561        | 1    | Screw, Cap  |      | 3706-690        | 1    | Bracket, Support - Footrest - Lower Right -<br>Black (Nightfire Sno Pro) |
| 14   | 4606-793        | 1    | Protector, Main Harness   |      | 3706-691        | 1    | Bracket, Support - Footrest - Lower Left -<br>Black (Nightfire Sno Pro)  |
| 15   | 1623-353        | 3    | Screw, Self-Tapping   | 33   | 4606-434        | 1    | Cover, Footrest - Right  |
| 16   | 1623-204        | 1    | Screw, Self-Tapping   |      | 4606-435        | 1    | Cover, Footrest - Left   |
| 17   | 0608-449        | 1    | Guide, Rope   | 34   | 1623-171        | 1    | Clip   |
| 18   | 8041-426        | 1    | Nut, Lock   | 35   | <u>1623-717</u> | 4    | Clip, Routing  |
| 19   | 2706-580        | 2    | Plate, Backing  | 36   | 1623-406        | 5    | Clip, Routing  |
| 20   | 8060-686        | AR   | Rivet   | 37   | <u>3706-921</u> | 1    | Brace, Side Plate - Left   |
|      | 8060-706        | AR   | Rivet (Nightfire Sno Pro)   |      | <u>4706-153</u> | 1    | Brace, Side Plate - Left - Black<br>(Nightfire Sno Pro)                  |
| 21   | <u>4706-034</u> | 1    | Footrest - Right (inc. 22-24 and 26)                                | 38   | 3706-613        | 1    | Bracket, Servomotor (inc. 39)  |
|      | <u>4706-035</u> | 1    | Footrest - Left (inc. 22-26)  | 39   | 0706-371        | AR   | ● Trim   |
|      | <u>4706-192</u> | 1    | Footrest - Right - Black (inc. 22-24 and 26)<br>(Nightfire Sno Pro) | 40   | <u>5606-208</u> | 1    | Clip, Servomotor   |
|      | <u>4706-193</u> | 1    | Footrest - Left - Black (inc. 22-26)<br>(Nightfire Sno Pro)         | 41   | 2606-129        | 1    | Cover, Servomotor  |
| 22   | 8060-484        | AR   | ● Rivet   | 42   | 8047-366        | 2    | Nut, Lock  |
|      | 8060-504        | AR   | ● Rivet (Nightfire Sno Pro)   |      |                 |      |  |
| 23   | 3606-837        | 2    | ● Plate, Retaining  |      |                 |      |  |

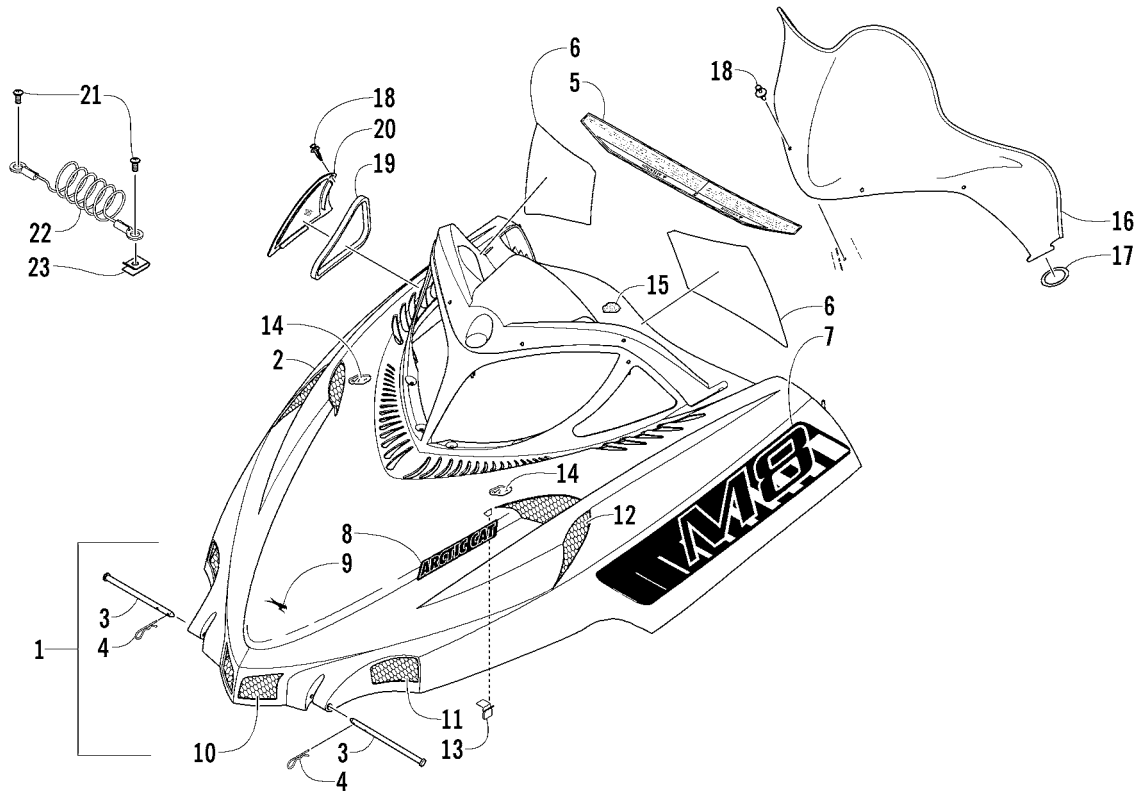


# HOOD AND WINDSHIELD ASSEMBLY

0742-798

| Ref. | Part No.                 | Qty. | Description  | Ref. | Part No.                 | Qty. | Description                           |
|------|--------------------------|------|--|------|--------------------------|------|---------------------------------------|
| 1    | <a href="#">2718-149</a> | 1    | Hood w/Decals - Black (inc. 2-10)                    | 9    | <a href="#">7611-891</a> | 1    | ● Decal, Hood - Crest                 |
|      | <a href="#">2718-150</a> | 1    | Hood w/Decals - Orange (inc. 2-10) (Orange)          |      | <a href="#">7611-892</a> | 1    | ● Decal, Hood - Crest (Orange)        |
|      | <a href="#">2718-415</a> | 1    | Hood w/Decals - White (inc. 2-10) (White Sno Pro)    |      | <a href="#">7611-893</a> | 1    | ● Decal, Hood - Crest (White Sno Pro) |
| 2    | <a href="#">2718-146</a> | 1    | ● Hood w/o Decals - Black (inc. 3-6)                 | 10   | <a href="#">8611-267</a> | 1    | ● Decal, AirCat - Chrome              |
|      | <a href="#">2718-147</a> | 1    | ● Hood w/o Decals - Orange (inc. 3-6) (Orange)       | 11   | 2706-793                 | 1    | Screen, Vent - Center                 |
|      | <a href="#">2718-414</a> | 1    | ● Hood w/o Decals - White (inc. 3-6) (White Sno Pro) | 12   | 3706-260                 | 1    | Screen, Vent - Front - Right          |
| 3    | 1623-026                 | 2    | ●● Pin, Clevis                                       |      | 3706-261                 | 1    | Screen, Vent - Front - Left           |
| 4    | 0623-847                 | 2    | ●● Clip, Hairpin                                     | 13   | 2706-796                 | 1    | Screen, Vent - Rear - Right           |
| 5    | 6611-143                 | 1    | ●● Decal, Caution                                    |      | 2706-797                 | 1    | Screen, Vent - Rear - Left            |
| 6    | 6611-144                 | 1    | ●● Decal, Warning - English                          | 14   | <a href="#">1623-694</a> | 38   | Clip, Retaining                       |
|      | 6611-145                 | 1    | ●● Decal, Warning - French                           | 15   | 0617-510                 | 1    | Foam, Hood - Right                    |
| 7    | <a href="#">7611-860</a> | 1    | ● Decal, Hood - Lower Right                          |      | 0617-545                 | 1    | Foam, Hood - Left                     |
|      | <a href="#">7611-861</a> | 1    | ● Decal, Hood - Lower Left                           | 16   | 0617-489                 | 1    | Foam, Hood - Rear                     |
|      | <a href="#">7611-862</a> | 1    | ● Decal, Hood - Lower Right (Orange)                 | 17   | 3606-868                 | 1    | Windshield                            |
|      | <a href="#">7611-863</a> | 1    | ● Decal, Hood - Lower Left (Orange)                  | 18   | 0616-032                 | 2    | O-Ring                                |
|      | <a href="#">7611-864</a> | 1    | ● Decal, Hood - Lower Right (White Sno Pro)          | 19   | 0623-362                 | 6    | Rivet, Reinstallable                  |
|      | <a href="#">7611-865</a> | 1    | ● Decal, Hood - Lower Left (White Sno Pro)           | 20   | 0617-486                 | 1    | Foam, Intake Bezel - Right            |
| 8    | <a href="#">7611-854</a> | 1    | ● Decal, Hood - Upper Right                          |      | 0617-487                 | 1    | Foam, Intake Bezel - Left             |
|      | <a href="#">7611-855</a> | 1    | ● Decal, Hood - Upper Left                           | 21   | <a href="#">5606-080</a> | 1    | Bezel, Intake - Right                 |
|      | <a href="#">7611-856</a> | 1    | ● Decal, Hood - Upper Right (Orange)                 |      | <a href="#">5606-081</a> | 1    | Bezel, Intake - Left                  |
|      | <a href="#">7611-857</a> | 1    | ● Decal, Hood - Upper Left (Orange)                  | 22   | 0623-302                 | 4    | Screw, Self-Tapping                   |
|      | <a href="#">7611-858</a> | 1    | ● Decal, Hood - Upper Right (White Sno Pro)          | 23   | 2606-726                 | 2    | Cable, Hood                           |
|      | <a href="#">7611-859</a> | 1    | ● Decal, Hood - Upper Left (White Sno Pro)           | 24   | 1623-052                 | 2    | U-Nut                                 |

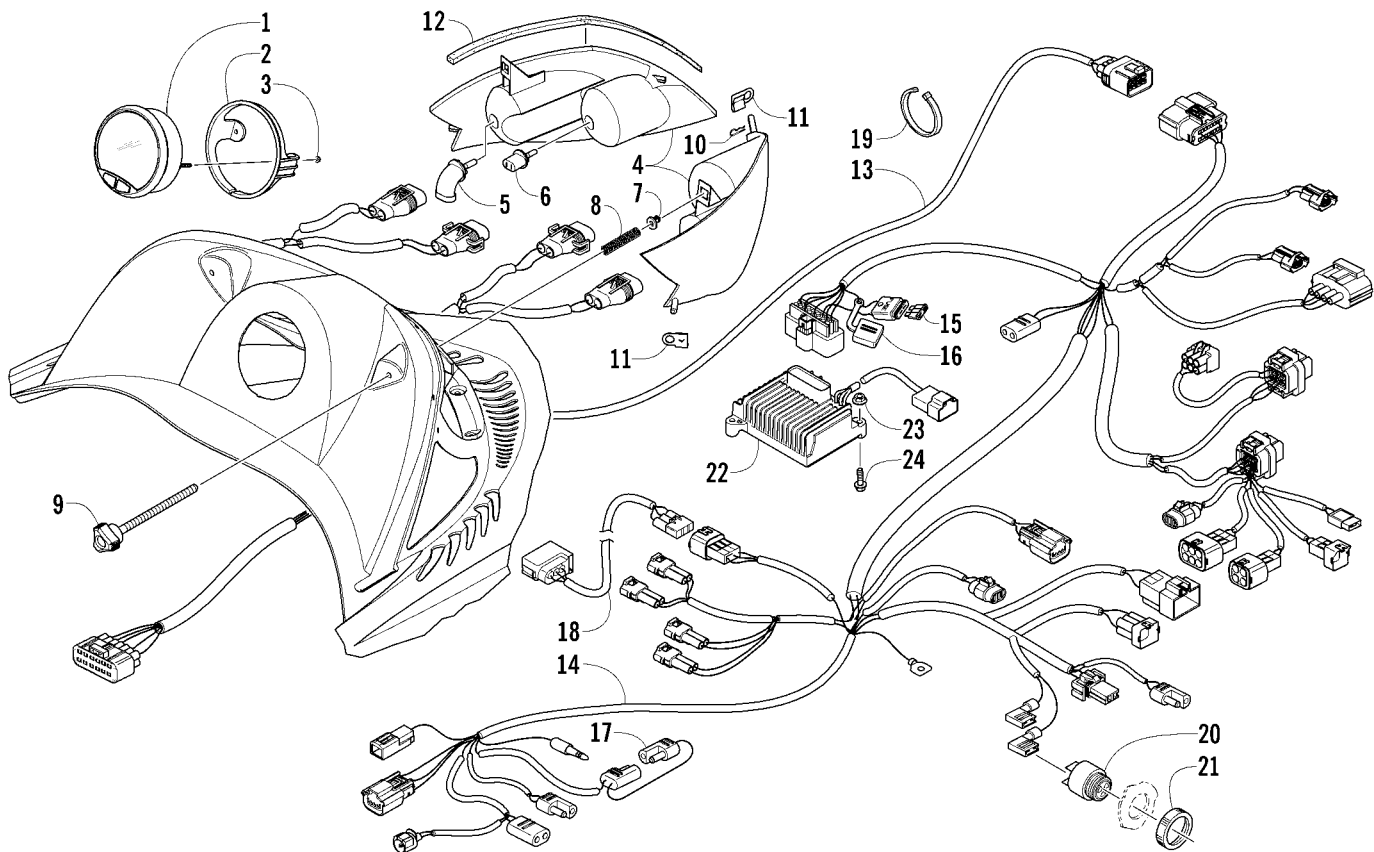




# HOOD AND WINDSHIELD ASSEMBLY (Nightfire Sno Pro)

0742-799

| Ref. | Part No.        | Qty. | Description                          | Ref. | Part No.        | Qty. | Description                |
|------|-----------------|------|--------------------------------------|------|-----------------|------|----------------------------|
| 1    | <u>2718-455</u> | 1    | Hood w/Decals - Black (inc. 2-9)     | 13   | <u>1623-694</u> | 38   | Clip, Retaining            |
| 2    | <u>2718-146</u> | 1    | ● Hood w/o Decals - Black (inc. 3-6) | 14   | 0617-510        | 1    | Foam, Hood - Right         |
| 3    | 1623-026        | 2    | ●● Pin, Clevis                       |      | 0617-545        | 1    | Foam, Hood - Left          |
| 4    | 0623-847        | 2    | ●● Clip, Hairpin                     | 15   | 0617-489        | 1    | Foam, Hood - Rear          |
| 5    | 6611-143        | 1    | ●● Decal, Caution                    | 16   | 3606-868        | 1    | Windshield                 |
| 6    | 6611-144        | 1    | ●● Decal, Warning - English          | 17   | 0616-032        | 2    | O-Ring                     |
|      | 6611-145        | 1    | ●● Decal, Warning - French           | 18   | 0623-362        | 6    | Rivet, Reinstallable       |
| 7    | <u>8611-310</u> | 1    | ● Decal, Hood - Lower Right          | 19   | 0617-486        | 1    | Foam, Intake Bezel - Right |
|      | <u>8611-311</u> | 1    | ● Decal, Hood - Lower Left           |      | 0617-487        | 1    | Foam, Intake Bezel - Left  |
| 8    | <u>8611-306</u> | 2    | ● Decal, Hood - "Arctic Cat"         | 20   | <u>5606-080</u> | 1    | Bezel, Intake - Right      |
| 9    | <u>8611-267</u> | 1    | ● Decal, AirCat - Chrome             |      | <u>5606-081</u> | 1    | Bezel, Intake - Left       |
| 10   | 2706-793        | 1    | Screen, Vent - Center                | 21   | 0623-302        | 4    | Screw, Self-Tapping        |
| 11   | 3706-260        | 1    | Screen, Vent - Front - Right         | 22   | 2606-726        | 2    | Cable, Hood                |
|      | 3706-261        | 1    | Screen, Vent - Front - Left          | 23   | 1623-052        | 2    | U-Nut                      |
| 12   | 2706-796        | 1    | Screen, Vent - Rear - Right          |      |                 |      |                            |
|      | 2706-797        | 1    | Screen, Vent - Rear - Left           |      |                 |      |                            |

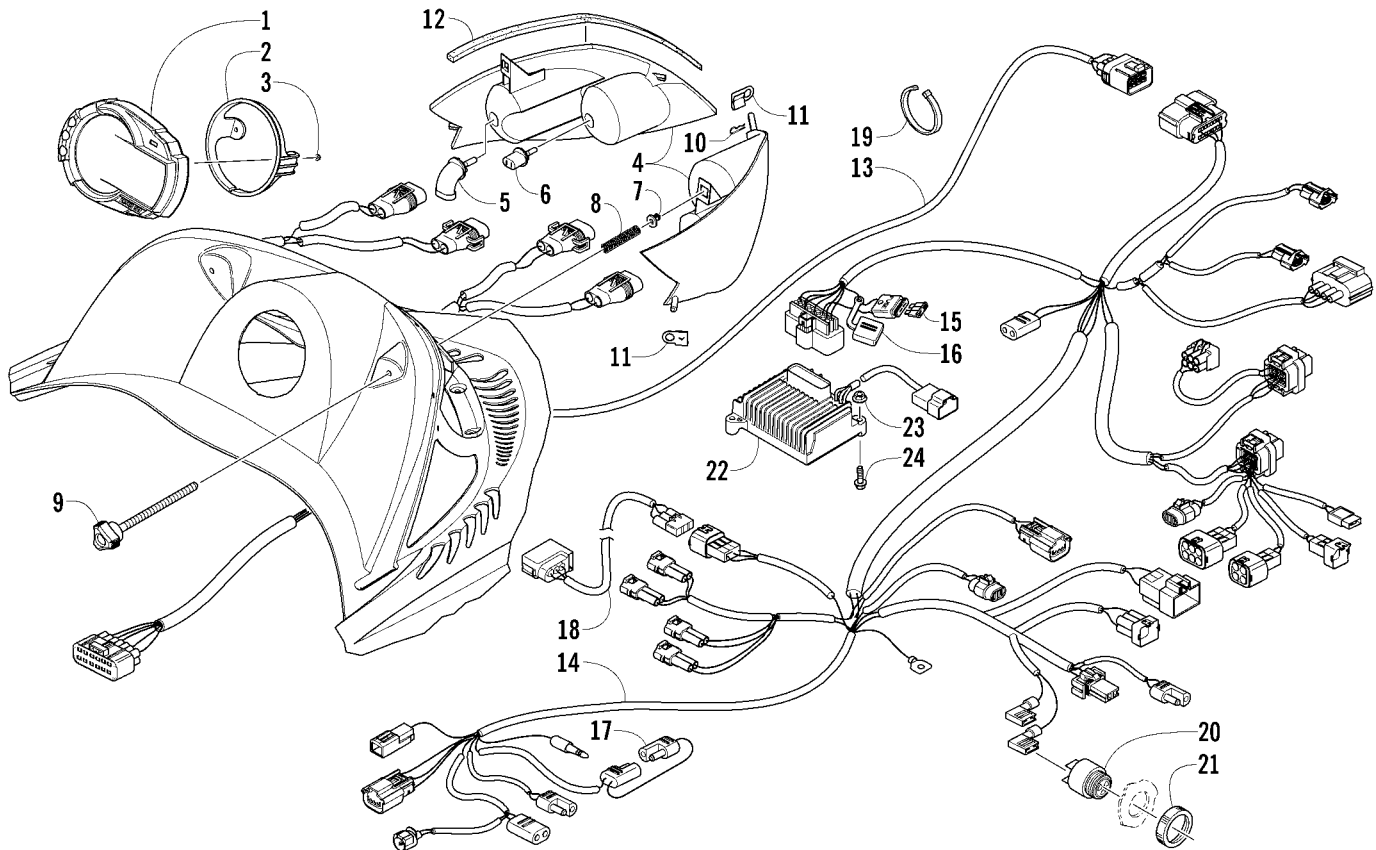


# HEADLIGHT, INSTRUMENTS, AND WIRING ASSEMBLIES

0742-800

| Ref. | Part No. | Qty. | Description                                   | Ref. | Part No. | Qty. | Description                          |
|------|----------|------|---|------|----------|------|--------------------------------------|
| 1    | 0620-316 | 1    | Tachometer/Speedometer                        | 13   | 1686-396 | 1    | Harness, Hood                        |
| 2    | 0620-322 | 1    | Bracket, Retaining                            | 14   | 1686-392 | 1    | Harness, Main (inc. 15-17)           |
| 3    | 0423-493 | 2    | Nut w/Washer                                  | 15   | 0630-024 | 1    | ● Fuse, 15 Amp                       |
| 4    | 0609-848 | 1    | Lens/Reflector - Headlight - Right (inc. 5-6) | 16   | 0630-102 | 1    | ● Cover, Fuse                        |
|      | 0609-849 | 1    | Lens/Reflector - Headlight - Left (inc. 5-6)  | 17   | 0486-164 | 1    | ● Tether, Accessory Connector        |
| 5    | 0609-251 | 2    | ● Bulb, Headlight                             | 18   | 1686-340 | 1    | Harness, Extension - Taillight       |
| 6    | 0609-693 | 2    | ● Bulb, Headlight                             |      | 1686-003 | 1    | Harness, Extension - Taillight (162) |
| 7    | 1623-025 | 2    | Insert  | 19   | 0123-788 | AR   | Cable Tie - 8 in.                    |
| 8    | 0623-360 | 2    | Spring, Adjuster                              | 20   | 0630-010 | 1    | Alarm, Reverse (inc. 21)             |
| 9    | 1623-024 | 2    | Screw, Adjuster                               | 21   | 0630-017 | 1    | ● Ring, Retaining                    |
| 10   | 1623-137 | 2    | Clip, Hairpin                                 | 22   | 0630-245 | 1    | Unit, Chassis Control                |
| 11   | 1623-272 | 2    | Clip - Right                                  | 23   | 8047-366 | 2    | Nut, Lock                            |
|      | 1623-273 | 2    | Clip - Left                                   | 24   | 8017-584 | 2    | Screw, Cap                           |
| 12   | 0617-501 | 2    | Foam, Hood/Headlight                          |      |          |      |                                      |





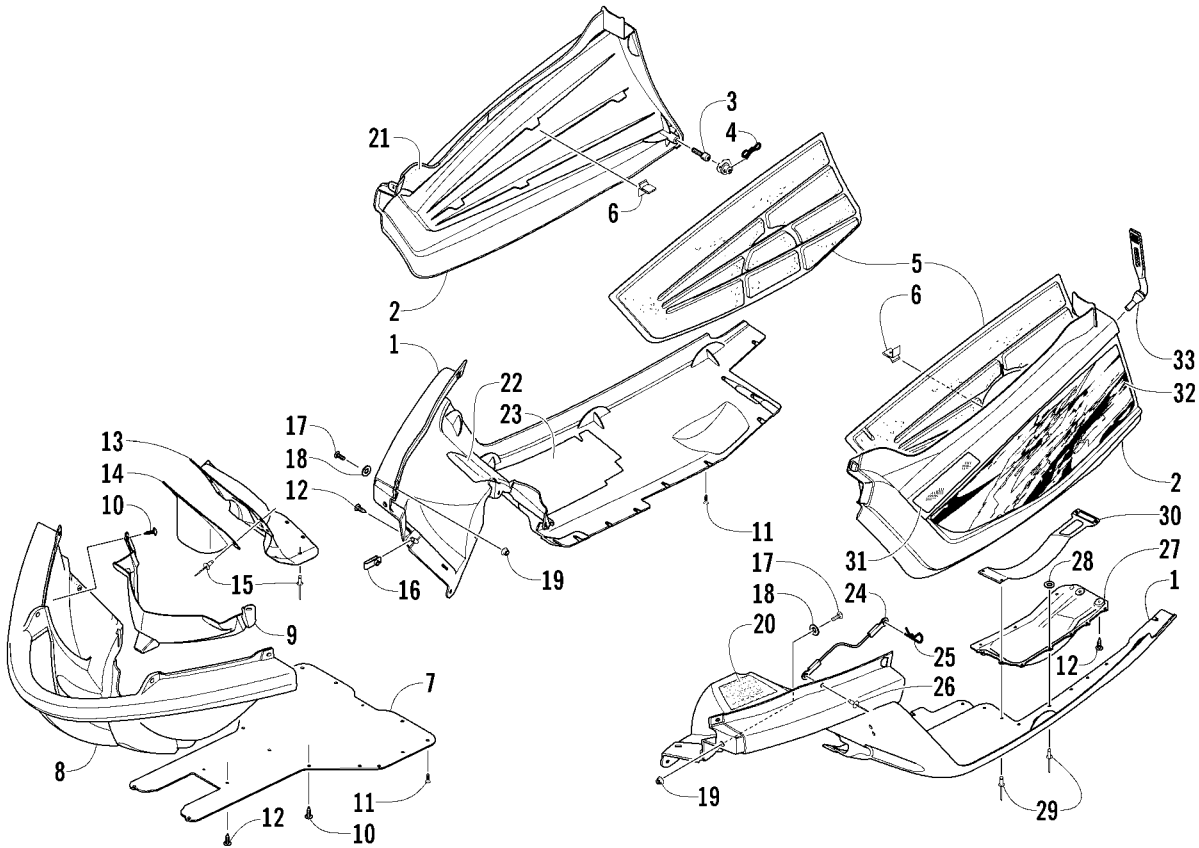
## HEADLIGHT, INSTRUMENTS, AND WIRING ASSEMBLIES (Sno Pro)

0742-801

| Ref. | Part No. | Qty. | Description                                   | Ref. | Part No. | Qty. | Description                          |
|------|----------|------|---|------|----------|------|--------------------------------------|
| 1    | 0620-317 | 1    | Tachometer/Speedometer                        | 13   | 1686-396 | 1    | Harness, Hood                        |
| 2    | 0620-322 | 1    | Bracket, Retaining                            | 14   | 1686-392 | 1    | Harness, Main (inc. 15-17)           |
| 3    | 0423-493 | 2    | Nut w/Washer                                  | 15   | 0630-024 | 1    | ● Fuse, 15 Amp                       |
| 4    | 0609-848 | 1    | Lens/Reflector - Headlight - Right (inc. 5-6) | 16   | 0630-102 | 1    | ● Cover, Fuse                        |
|      | 0609-849 | 1    | Lens/Reflector - Headlight - Left (inc. 5-6)  | 17   | 0486-164 | 1    | ● Tether, Accessory Connector        |
| 5    | 0609-251 | 2    | ● Bulb, Headlight                             | 18   | 1686-340 | 1    | Harness, Extension - Taillight       |
| 6    | 0609-693 | 2    | ● Bulb, Headlight                             |      | 1686-003 | 1    | Harness, Extension - Taillight (162) |
| 7    | 1623-025 | 2    | Insert  | 19   | 0123-788 | AR   | Cable Tie - 8 in.                    |
| 8    | 0623-360 | 2    | Spring, Adjuster                              | 20   | 0630-010 | 1    | Alarm, Reverse (inc. 21)             |
| 9    | 1623-024 | 2    | Screw, Adjuster                               | 21   | 0630-017 | 1    | ● Ring, Retaining                    |
| 10   | 1623-137 | 2    | Clip, Hairpin                                 | 22   | 0630-245 | 1    | Unit, Chassis Control                |
| 11   | 1623-272 | 2    | Clip - Right                                  | 23   | 8047-366 | 2    | Nut, Lock                            |
|      | 1623-273 | 2    | Clip - Left                                   | 24   | 8017-584 | 2    | Screw, Cap                           |
| 12   | 0617-501 | 2    | Foam, Hood/Headlight                          |      |          |      |                                      |



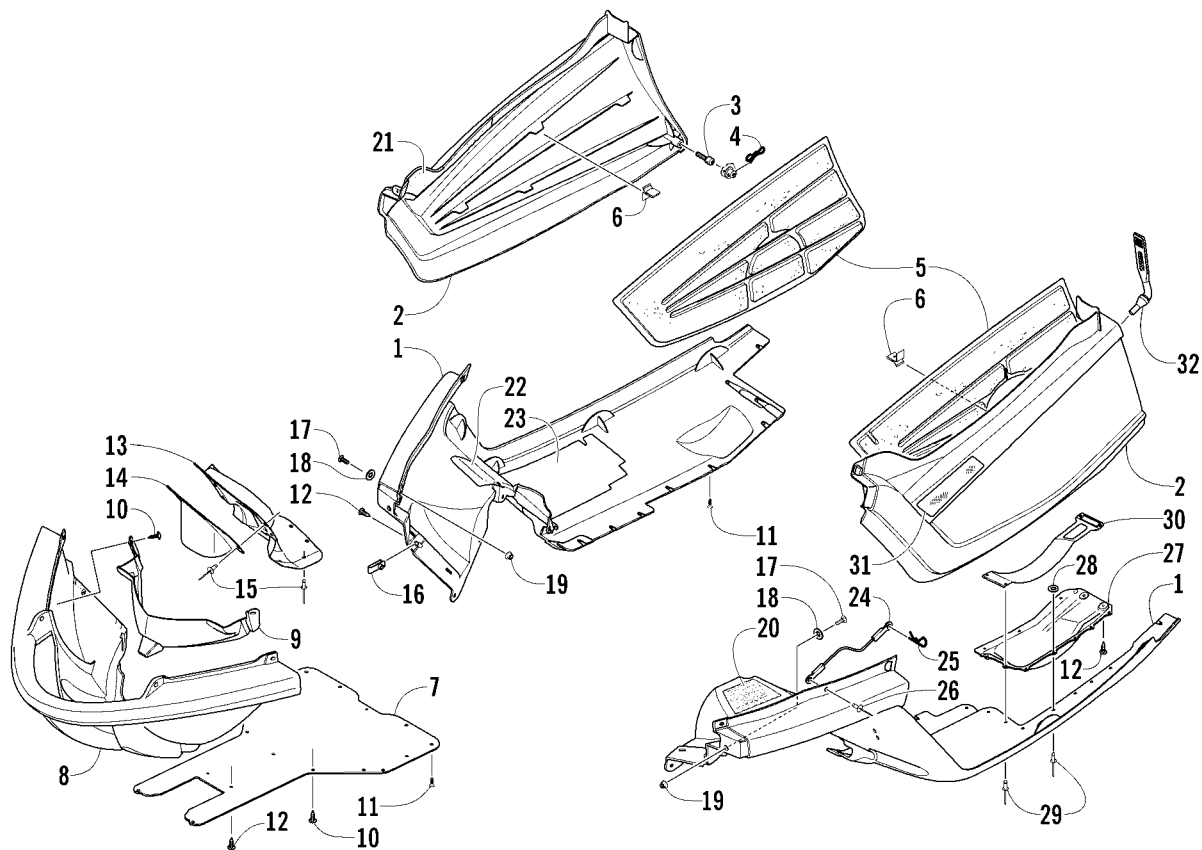
| Ref. | Part No. | Qty. | Description               | Ref. | Part No.        | Qty. | Description                            |
|------|----------|------|---------------------------|------|-----------------|------|--|
| 1    | 3606-442 | 1    | Console                   | 8    | 0123-899        | 1    | Washer, Ignition Switch                |
| 2    | 6611-581 | 1    | Decal, Console            | 9    | 0609-450        | 1    | Spacer, Ignition Switch                |
| 3    | 8050-157 | 4    | Washer                    | 10   | <u>8468-511</u> | 7    | Screw, Machine                         |
| 4    | 8041-246 | 4    | Nut, Lock                 |      |                 |      |  |
| 5    | 0609-728 | 1    | Switch, Ignition (inc. 6) |      |                 |      | *Key is coded to switch; see dealer to |
| 6    | *        | 1    | ● Key                     |      |                 |      | determine part number.                 |
| 7    | 0609-113 | 1    | Nut, Retaining            |      |                 |      |  |



## BELLY PAN ASSEMBLY

0742-802

| Ref. | Part No.        | Qty. | Description                     | Ref. | Part No.        | Qty. | Description                                 |
|------|-----------------|------|---------------------------------|------|-----------------|------|---|
| 1    | 3706-606        | 1    | Belly Pan - Right - Black       | 20   | <u>8611-263</u> | 1    | Decal, Clutching                            |
|      | 3706-429        | 1    | Belly Pan - Left - Black        |      | <u>8611-264</u> | 1    | Decal, Clutching (White Sno Pro)            |
| 2    | 4606-256        | 1    | Panel, Access - Right - Black   | 21   | <u>5606-052</u> | 1    | Foil, Protective - Access Panel             |
|      | 4606-257        | 1    | Panel, Access - Left - Black    | 22   | 4606-207        | 1    | Foil, Protective - Upper Belly Pan          |
| 3    | 1623-666        | 2    | Screw, Retaining - Access Panel | 23   | 4606-208        | 1    | Foil, Protective - Lower Belly Pan          |
| 4    | 1623-546        | 2    | Clip, Retaining - Access Panel  | 24   | 0607-447        | 2    | Cable                                       |
| 5    | 0617-502        | 1    | Foam, Side Panel - Right        | 25   | 0605-283        | 2    | Clip, Hairpin                               |
|      | 0617-503        | 1    | Foam, Side Panel - Left         | 26   | 8061-426        | 2    | Rivet                                       |
| 6    | <u>1623-694</u> | 11   | Clip, Retaining                 | 27   | 4606-417        | 1    | Protector, Driven Clutch                    |
| 7    | 3606-867        | 1    | Belly Pan, Center - Black       | 28   | 0123-802        | 5    | Washer                                      |
| 8    | 4606-040        | 1    | Bumper, Front - Black           | 29   | 8061-628        | 7    | Rivet                                       |
| 9    | 2606-911        | 1    | Screen, Belly Pan - Center      | 30   | 4606-993        | 1    | Deflector, Driven Clutch Protector          |
| 10   | 0623-784        | 10   | Screw, Self-Tapping             | 31   | 7611-160        | 1    | Decal, Reflector - Amber - Right            |
| 11   | 0623-797        | 29   | Screw, Self-Tapping             |      | 7611-161        | 1    | Decal, Reflector - Amber - Left             |
| 12   | 1623-129        | 6    | Screw, Self-Tapping             | 32   | <u>7611-872</u> | 1    | Decal, Access Panel - Right                 |
| 13   | 1612-853        | 1    | Shield, Heat                    |      | <u>7611-873</u> | 1    | Decal, Access Panel - Left                  |
| 14   | 1612-861        | 1    | Deflector, Exhaust              |      | <u>7611-874</u> | 1    | Decal, Access Panel - Right (Orange)        |
| 15   | 0623-778        | 14   | Rivet                           |      | <u>7611-875</u> | 1    | Decal, Access Panel - Left (Orange)         |
| 16   | 1623-030        | 2    | Nut, Speed                      |      | <u>7611-900</u> | 1    | Decal, Access Panel - Right (White Sno Pro) |
| 17   | 8017-581        | 4    | Screw, Machine                  |      | <u>7611-901</u> | 1    | Decal, Access Panel - Left (White Sno Pro)  |
| 18   | 8050-217        | 4    | Washer                          | 33   | 2606-624        | 2    | Strap, Hold-Down                            |
| 19   | 8047-366        | 4    | Nut, Lock                       |      |                 |      |   |



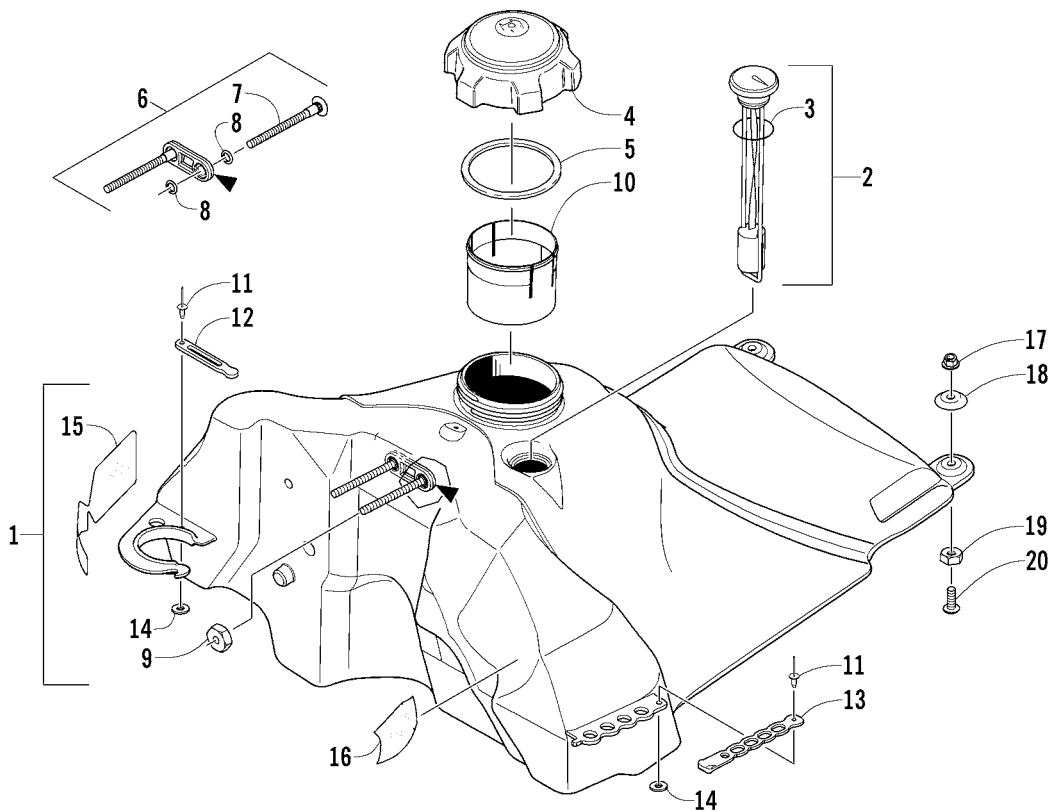
# BELLY PAN ASSEMBLY (Nightfire Sno Pro)

0742-803

| Ref. | Part No. | Qty. | Description                     | Ref. | Part No. | Qty. | Description                        |
|------|----------|------|---------------------------------|------|----------|------|------------------------------------|
| 1    | 3706-606 | 1    | Belly Pan - Right - Black       | 16   | 1623-030 | 2    | Nut, Speed                         |
|      | 3706-429 | 1    | Belly Pan - Left - Black        | 17   | 8017-581 | 4    | Screw, Machine                     |
| 2    | 4606-256 | 1    | Panel, Access - Right - Black   | 18   | 8050-217 | 4    | Washer                             |
|      | 4606-257 | 1    | Panel, Access - Left - Black    | 19   | 8047-366 | 4    | Nut, Lock                          |
| 3    | 1623-666 | 2    | Screw, Retaining - Access Panel | 20   | 8611-264 | 1    | Decal, Clutching                   |
| 4    | 1623-546 | 2    | Clip, Retaining - Access Panel  | 21   | 5606-052 | 1    | Foil, Protective - Access Panel    |
| 5    | 0617-502 | 1    | Foam, Side Panel - Right        | 22   | 4606-207 | 1    | Foil, Protective - Upper Belly Pan |
|      | 0617-503 | 1    | Foam, Side Panel - Left         | 23   | 4606-208 | 1    | Foil, Protective - Lower Belly Pan |
| 6    | 1623-694 | 11   | Clip, Retaining                 | 24   | 0607-447 | 2    | Cable                              |
| 7    | 3606-867 | 1    | Belly Pan, Center - Black       | 25   | 0605-283 | 2    | Clip, Hairpin                      |
| 8    | 4606-040 | 1    | Bumper, Front - Black           | 26   | 8061-426 | 2    | Rivet                              |
| 9    | 2606-911 | 1    | Screen, Belly Pan - Center      | 27   | 4606-417 | 1    | Protector, Driven Clutch           |
| 10   | 0623-784 | 10   | Screw, Self-Tapping             | 28   | 0123-802 | 5    | Washer                             |
| 11   | 0623-797 | 29   | Screw, Self-Tapping             | 29   | 8061-628 | 7    | Rivet                              |
| 12   | 1623-129 | 6    | Screw, Self-Tapping             | 30   | 4606-993 | 1    | Deflector, Driven Clutch Protector |
| 13   | 1712-488 | 1    | Shield, Heat                    | 31   | 7611-160 | 1    | Decal, Reflector - Amber - Right   |
| 14   | 1712-489 | 1    | Deflector, Exhaust              |      | 7611-161 | 1    | Decal, Reflector - Amber - Left    |
| 15   | 0623-778 | 14   | Rivet                           | 32   | 2606-624 | 2    | Strap, Hold-Down                   |



| Ref. | Part No. | Qty. | Description                         | Ref. | Part No. | Qty. | Description       |
|------|----------|------|-------------------------------------|------|----------|------|-------------------|
| 1    | 1707-094 | 1    | Guard, Belt                         | 5    | 0617-497 | 1    | Foam, Belt Guard  |
| 2    | 1611-565 | 1    | Decal, Warning - Belt Guard         | 6    | 0607-836 | 1    | Bracket, Mounting |
| 3    | 3611-969 | 1    | Decal, "ACT - Roller Driven Clutch" | 7    | 8061-506 | 4    | Rivet             |
| 4    | 0707-582 | 1    | Retainer, Drive Belt                |      |          |      |                   |

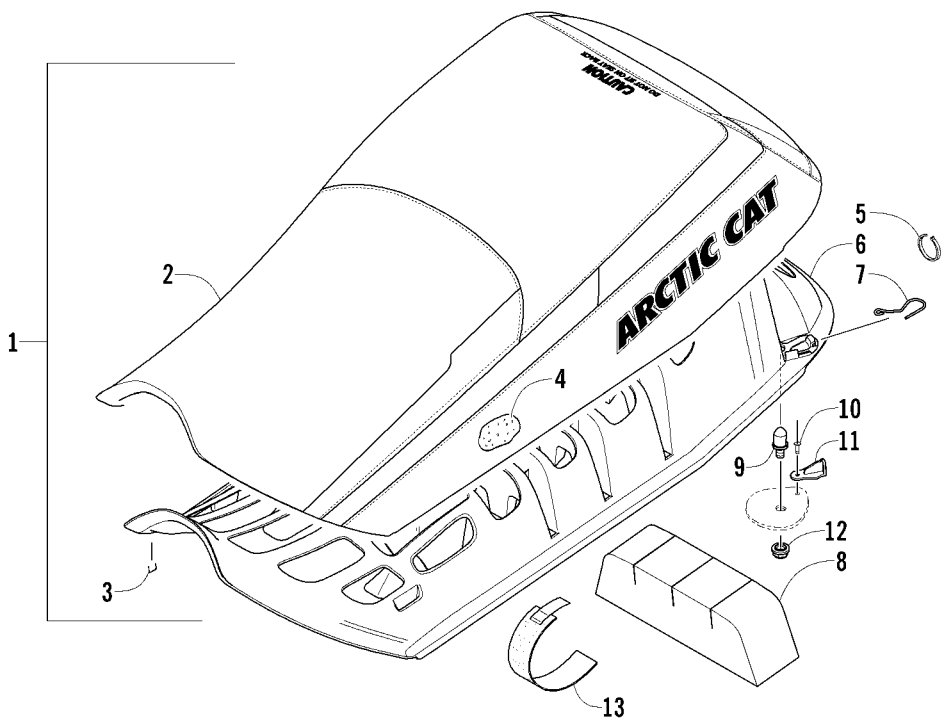


GAS TANK ASSEMBLY

0742-454

| Ref. | Part No. | Qty. | Description  | Ref. | Part No. | Qty. | Description                       |
|------|----------|------|--|------|----------|------|-----------------------------------|
| 1    | 0770-809 | 1    | Tank, Gas (inc. 2-16)                                    | 11   | 8061-630 | 2    | ● Rivet                           |
| 2    | 1670-824 | 1    | ● Gauge, Fuel w/Seal (inc. 3)                            | 12   | 3606-173 | 1    | ● Strap, Hold-Down - Coolant Tank |
| 3    | 0470-400 | 1    | ●● Seal, Fuel Gauge                                      | 13   | 4606-160 | 1    | ● Strap, Hold-Down - Spark Plug   |
| 4    | 1670-447 | 1    | ● Cap, Gas Tank (inc. 5)                                 | 14   | 8050-157 | 2    | ● Washer                          |
| 5    | 1670-511 | 1    | ●● Seal, Gas Tank Cap                                    | 15   | 5606-107 | 1    | ● Foil, Protective                |
| 6    | 1705-116 | 1    | ● Plate, Mounting - Steering Post (inc. 7 and two No. 8) | 16   | 5606-049 | 1    | ● Foil, Protective                |
| 7    | 1623-447 | 2    | ●● Bolt, Carriage  | 17   | 8047-366 | 2    | Nut, Lock                         |
| 8    | 1623-448 | 4    | ●● O-Ring  | 18   | 0123-765 | 2    | Washer, Cup                       |
| 9    | 1623-483 | 2    | ● Nut, Aluminum  | 19   | 1623-077 | 2    | Nut                               |
| 10   | 1670-801 | 1    | ● Neck, Gas Tank Extension                               | 20   | 8017-582 | 2    | Screw, Machine                    |



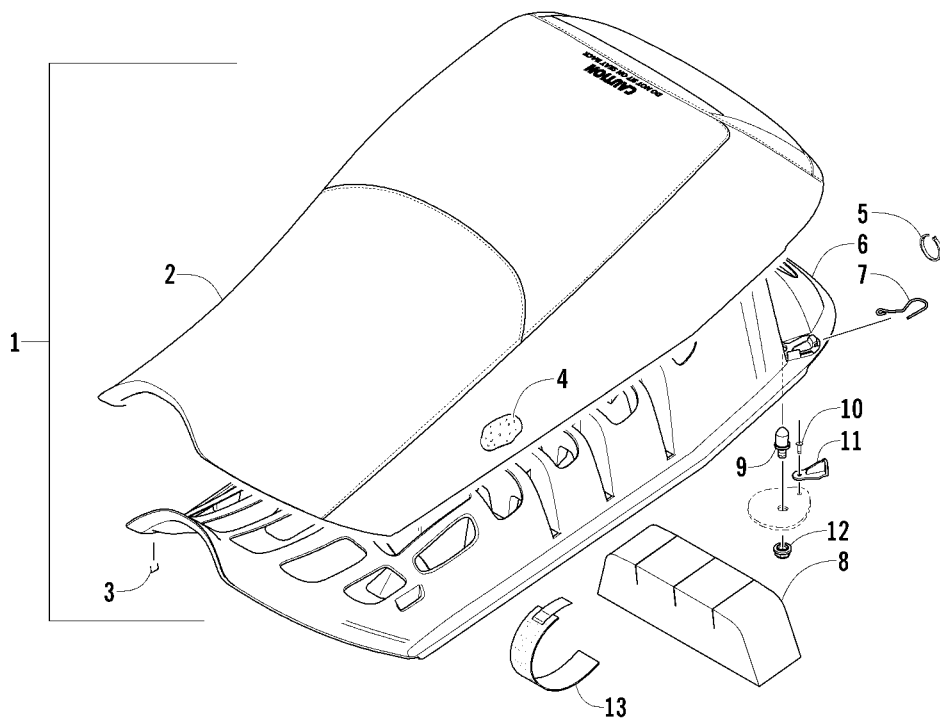


SEAT ASSEMBLY

0742-457 \*Not Illustrated

| Ref. | Part No. | Qty. | Description                          | Ref. | Part No. | Qty. | Description                   |
|------|----------|------|--------------------------------------|------|----------|------|-------------------------------|
| 1    | 7999-615 | 1    | Complete Seat Assembly (inc. 2-8)    | 7    | 1623-393 | 2    | ● Clip, Retaining - Seat-Base |
|      | 7999-616 | 1    | Complete Seat Assembly (inc. 2-8)    | 8    | 0617-512 | 1    | ● Foam, Compartment - Seat    |
|      |          |      | (Orange/White Sno Pro)               | 9    | 1623-458 | 2    | Stud, Latch - Seat-Base       |
| 2    | 3706-872 | 1    | ● Cover, Seat                        | 10   | 8061-628 | 1    | Rivet                         |
|      | 3706-873 | 1    | ● Cover, Seat (Orange/White Sno Pro) | 11   | 4606-322 | 1    | Cover, Latch - Seat - Right   |
| 3    | 0624-528 | AR   | ● Staple, Seat Cover                 | 12   | 8047-426 | 2    | Nut, Lock                     |
| 4    | 2706-647 | 1    | ● Foam, Seat Cushion                 | 13   | 3706-033 | 1    | Retainer, Tool Kit            |
| 5    | 0123-788 | 2    | ● Cable Tie - 7 in.                  | *    | 3706-731 | 1    | Kit, Tool                     |
| 6    | 4606-128 | 1    | ● Seat-Base                          |      |          |      |                               |

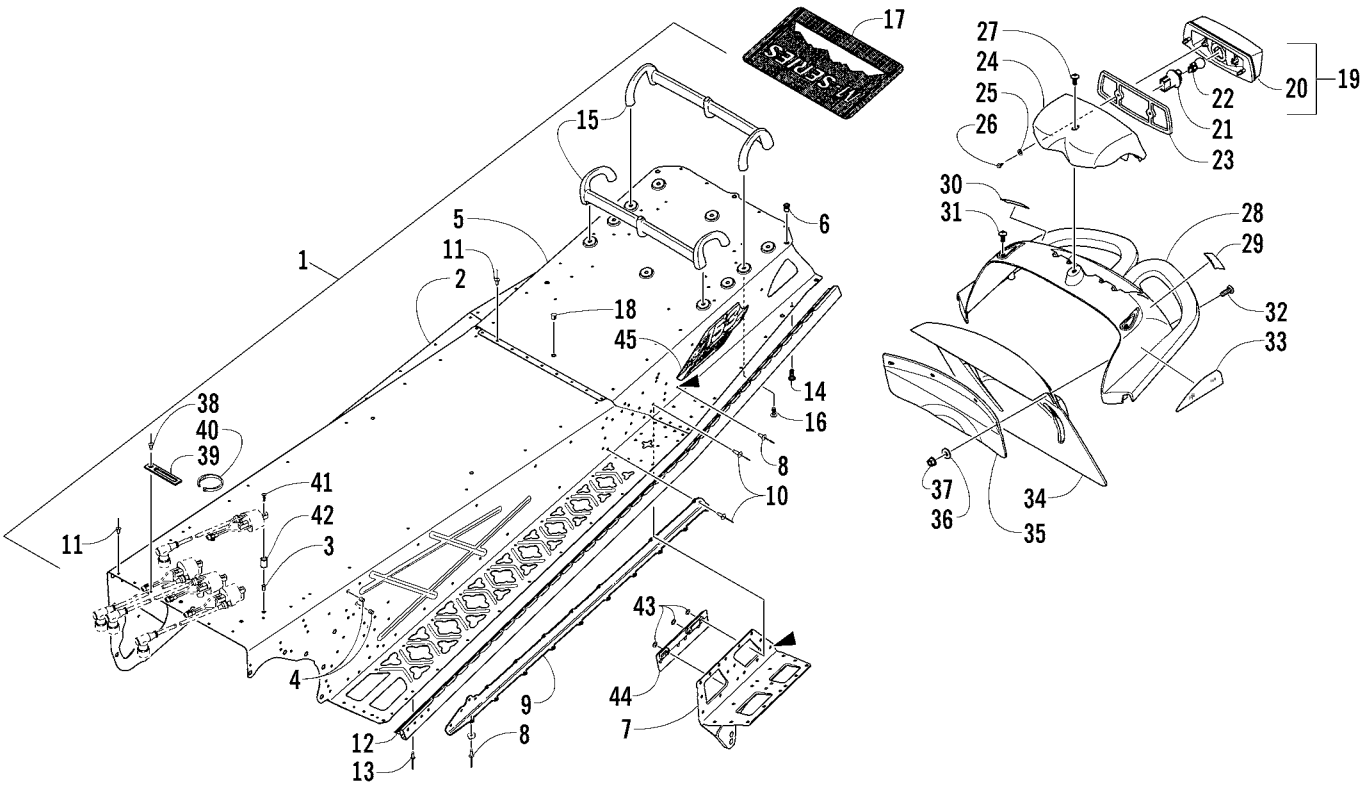




## SEAT ASSEMBLY (Nightfire Sno Pro)

0742-647 \*Not Illustrated

| Ref. | Part No. | Qty. | Description                       | Ref. | Part No. | Qty. | Description                 |
|------|----------|------|-----------------------------------|------|----------|------|-----------------------------|
| 1    | 7999-990 | 1    | Complete Seat Assembly (inc. 2-8) | 8    | 0617-512 | 1    | ● Foam, Compartment - Seat  |
| 2    | 4706-152 | 1    | ● Cover, Seat                     | 9    | 1623-458 | 2    | Stud, Latch - Seat-Base     |
| 3    | 0624-528 | AR   | ● Staple, Seat Cover              | 10   | 8061-628 | 1    | Rivet                       |
| 4    | 2706-647 | 1    | ● Foam, Seat Cushion              | 11   | 4606-322 | 1    | Cover, Latch - Seat - Right |
| 5    | 0123-788 | 2    | ● Cable Tie - 7 in.               | 12   | 8047-426 | 2    | Nut, Lock                   |
| 6    | 4606-128 | 1    | ● Seat-Base                       | 13   | 3706-033 | 1    | Retainer, Tool Kit          |
| 7    | 1623-393 | 2    | ● Clip, Retaining - Seat-Base     | *    | 3706-731 | 1    | Kit, Tool                   |

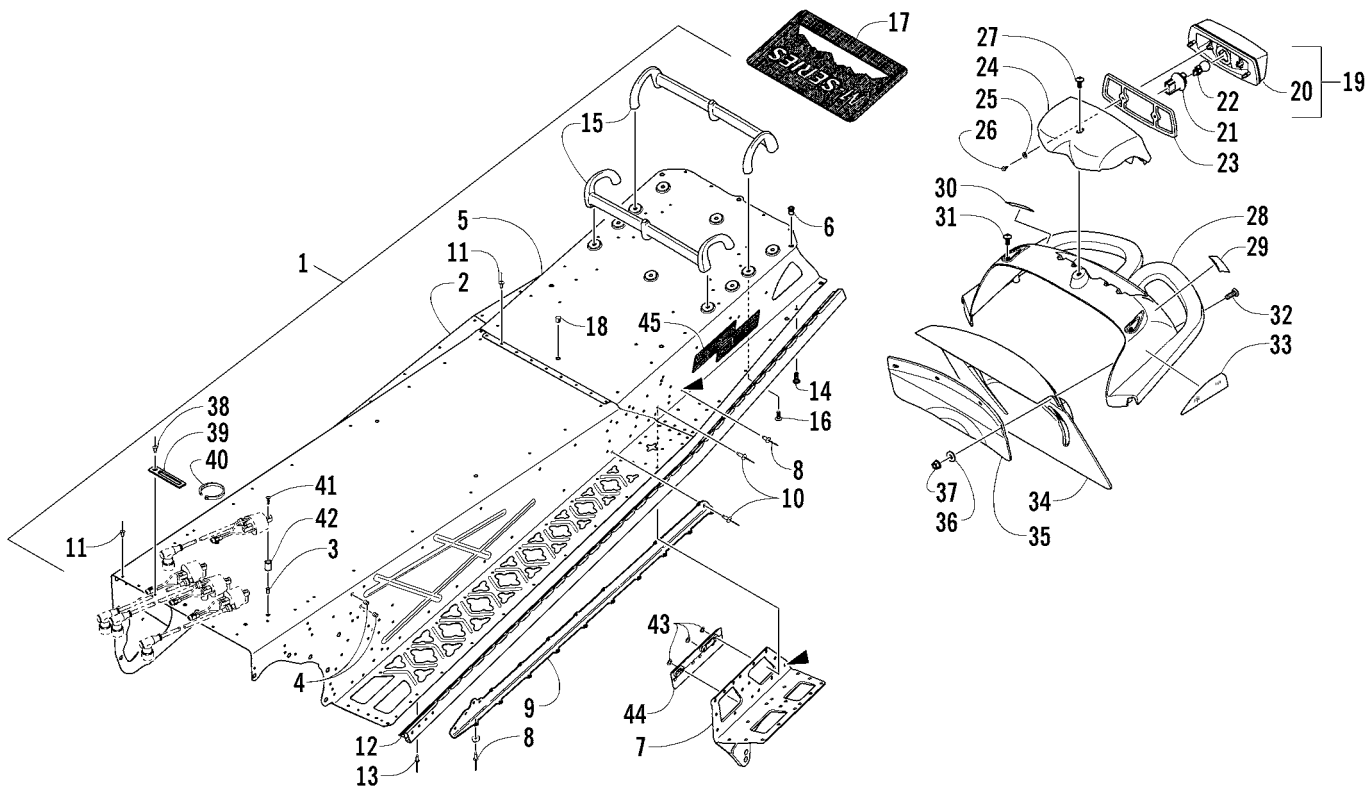


# TUNNEL, REAR BUMPER, AND TAILLIGHT ASSEMBLY

(Complete Chassis Assembly p/n 1707-230; p/n 1707-231 162)

0742-648

| Ref. | Part No.        | Qty. | Description                                   | Ref. | Part No.        | Qty. | Description                                |
|------|-----------------|------|---|------|-----------------|------|--|
| 1    | <u>2718-516</u> | 1    | Tunnel Assembly (inc. 2-11)                   | 24   | 3606-747        | 1    | Housing, Taillight Mounting                |
|      | <u>2718-518</u> | 1    | Tunnel Assembly (inc. 2-11) (162)             | 25   | 8050-127        | 2    | Washer                                     |
| 2    | <u>2718-507</u> | 1    | ● Tunnel, Front (inc. 3-4)                    | 26   | 0623-297        | 2    | Screw, Self-Tapping                        |
| 3    | 1623-562        | 8    | ●●● Insert                                    | 27   | 1623-513        | 1    | Screw, Machine                             |
| 4    | 1623-657        | 4    | ●●● Insert                                    | 28   | 3606-431        | 1    | Bumper, Rear                               |
| 5    | <u>2718-454</u> | 1    | ● Tunnel, Rear (inc. 6)                       | 29   | 5611-853        | 1    | Decal, Warning - Towing (English)          |
|      | <u>2718-517</u> | 1    | ● Tunnel, Rear (inc. 6) (162)                 | 30   | 5611-852        | 1    | Decal, Warning - Towing (French)           |
| 6    | 0623-582        | 2    | ●●● Insert                                    | 31   | 1623-501        | 2    | Screw, Machine                             |
| 7    | 2706-456        | 1    | ● Bracket, Suspension Mounting - Right - Rear | 32   | 8017-581        | 4    | Screw, Machine                             |
|      | 2706-457        | 1    | ● Bracket, Suspension Mounting - Left - Rear  | 33   | 8611-010        | 1    | Decal, Reflector - Red - Right             |
| 8    | 8060-686        | AR   | ● Rivet                                       |      | 8611-011        | 1    | Decal, Reflector - Red - Left              |
| 9    | <u>5606-402</u> | 1    | ● Bracket, Tunnel Support - Right             | 34   | <u>5606-060</u> | 1    | Snowflap                                   |
|      | <u>5606-403</u> | 1    | ● Bracket, Tunnel Support - Left              | 35   | 3606-776        | 1    | Support, Snowflap                          |
| 10   | 8060-688        | 10   | ● Rivet                                       | 36   | 0623-184        | 4    | Washer                                     |
| 11   | 8060-484        | AR   | ● Rivet                                       | 37   | 8047-366        | 4    | Nut, Lock                                  |
| 12   | <u>4606-052</u> | 1    | Roll, Tunnel - Right                          | 38   | 8060-486        | 1    | Rivet                                      |
|      | <u>4606-053</u> | 1    | Roll, Tunnel - Left                           | 39   | 3002-964        | 1    | Clamp, Wire                                |
|      | <u>4606-054</u> | 1    | Roll, Tunnel - Right (162)                    | 40   | 0123-788        | 1    | Cable Tie                                  |
|      | <u>4606-055</u> | 1    | Roll, Tunnel - Left (162)                     | 41   | 1623-671        | 8    | Screw, Machine                             |
| 13   | 8060-482        | AR   | Rivet   | 42   | 1623-045        | 8    | Spacer                                     |
| 14   | 1623-022        | 4    | Screw, Self-Tapping                           | 43   | 0123-802        | 6    | Washer                                     |
| 15   | 3606-584        | 2    | Rack  | 44   | 4606-790        | 1    | Guide, Track - Tunnel - Right              |
| 16   | 1623-499        | 10   | Screw, Machine                                |      | 4606-791        | 1    | Guide, Track - Tunnel - Left               |
| 17   | 3606-585        | 1    | Pad, Rubber                                   | 45   | <u>7611-878</u> | 1    | Decal, "153" - Right                       |
| 18   | 0623-562        | 1    | Plug, Hole                                    |      | <u>7611-879</u> | 1    | Decal, "153" - Left                        |
| 19   | 0509-022        | 1    | Taillight Assembly (inc. 20-22)               |      | <u>7611-884</u> | 1    | Decal, "153" - Right                       |
| 20   | 0509-025        | 1    | ● Housing, Taillight                          |      |                 |      | (Orange/White Sno Pro)                     |
| 21   | 0409-057        | 1    | ● Socket, Taillight                           |      | <u>7611-885</u> | 1    | Decal, "153" - Left (Orange/White Sno Pro) |
| 22   | 0409-056        | 1    | ● Bulb, Taillight                             |      | <u>7611-880</u> | 1    | Decal, "162" - Right (Black 162)           |
| 23   | 4606-382        | 1    | Spacer, Taillight                             |      | <u>7611-881</u> | 1    | Decal, "162" - Left (Black 162)            |
|      |                 |      |   |      | <u>7611-886</u> | 1    | Decal, "162" - Right (Orange 162)          |
|      |                 |      |   |      | <u>7611-887</u> | 1    | Decal, "162" - Left (Orange 162)           |

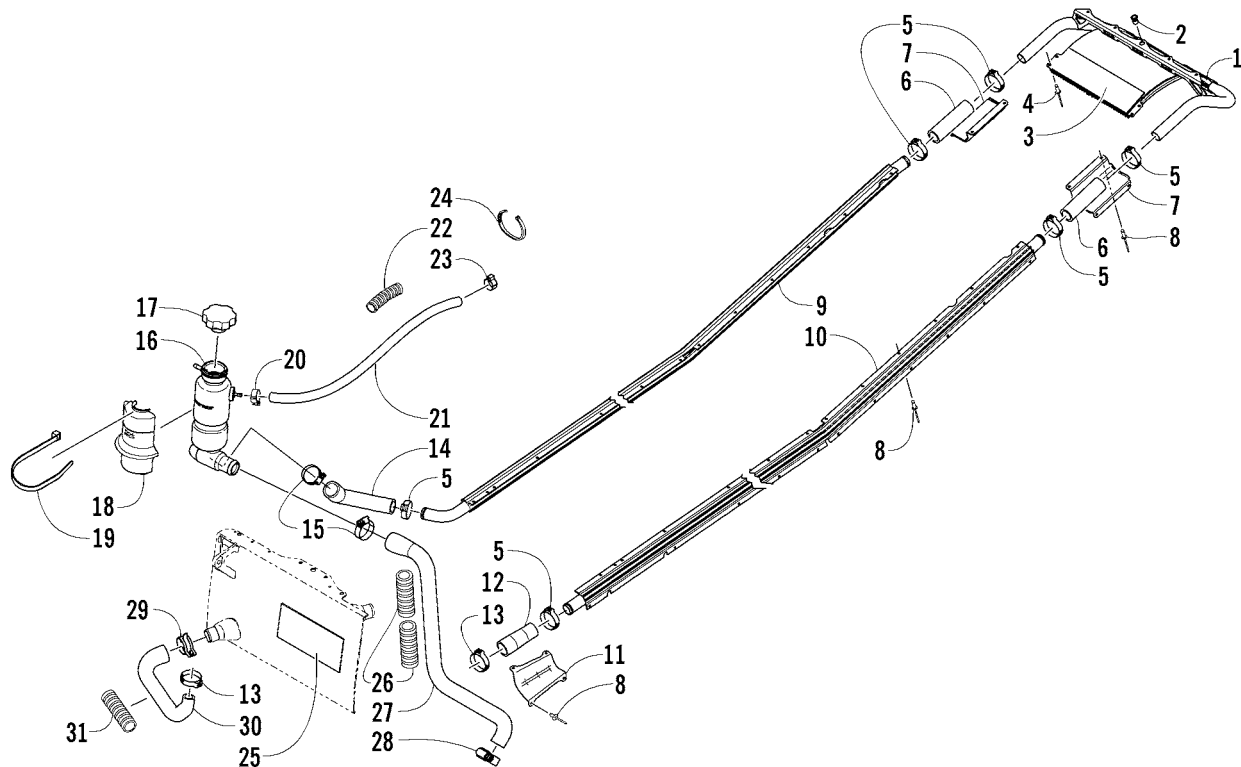


## TUNNEL, REAR BUMPER, AND TAILLIGHT ASSEMBLY (Nightfire Sno Pro)

(Complete Chassis Assembly p/n 1707-257)

0742-649

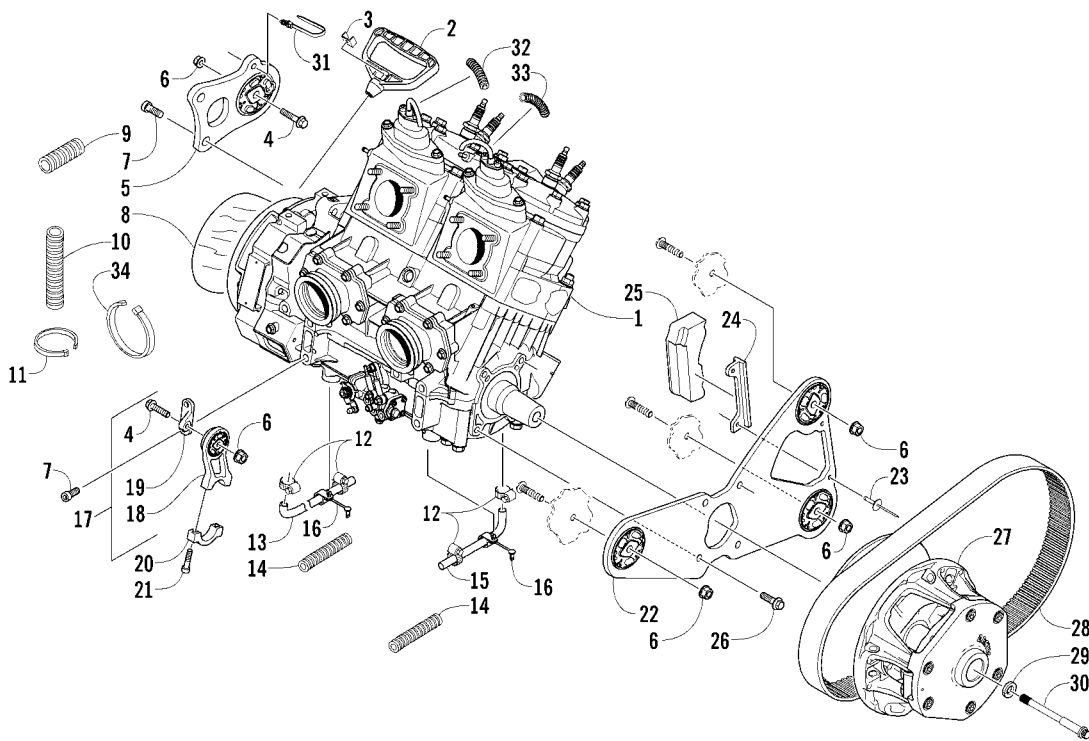
| Ref. | Part No.        | Qty. | Description   | Ref. | Part No.        | Qty. | Description                       |
|------|-----------------|------|---|------|-----------------|------|-----------------------------------|
| 1    | <u>2718-637</u> | 1    | Tunnel Assembly - Black (inc. 2-11)                   | 22   | 0409-056        | 1    | ● Bulb, Taillight                 |
| 2    | <u>2718-520</u> | 1    | ● Tunnel, Front - Black (inc. 3-4)                    | 23   | 4606-382        | 1    | Spacer, Taillight                 |
| 3    | 1623-562        | 8    | ●● Insert   | 24   | 3606-747        | 1    | Housing, Taillight Mounting       |
| 4    | 1623-657        | 4    | ●● Insert   | 25   | 8050-127        | 2    | Washer                            |
| 5    | <u>2718-636</u> | 1    | ● Tunnel, Rear - Black (inc. 6)                       | 26   | 0623-297        | 2    | Screw, Self-Tapping               |
| 6    | 0623-582        | 2    | ●● Insert   | 27   | 1623-513        | 1    | Screw, Machine                    |
| 7    | <u>4706-190</u> | 1    | ● Bracket, Suspension Mounting - Right - Rear - Black | 28   | 3606-431        | 1    | Bumper, Rear                      |
|      | <u>4706-191</u> | 1    | ● Bracket, Suspension Mounting - Left - Rear - Black  | 29   | 5611-853        | 1    | Decal, Warning - Towing (English) |
| 8    | 8060-706        | AR   | ● Rivet   | 30   | 5611-852        | 1    | Decal, Warning - Towing (French)  |
| 9    | <u>4706-170</u> | 1    | ● Bracket, Tunnel Support - Right - Black             | 31   | 1623-501        | 2    | Screw, Machine                    |
|      | <u>4706-171</u> | 1    | ● Bracket, Tunnel Support - Left - Black              | 32   | 8017-581        | 4    | Screw, Machine                    |
| 10   | 8060-708        | 10   | ● Rivet   | 33   | 8611-010        | 1    | Decal, Reflector - Red - Right    |
| 11   | 8060-504        | AR   | ● Rivet   |      | 8611-011        | 1    | Decal, Reflector - Red - Left     |
| 12   | <u>4706-294</u> | 1    | Roll, Tunnel - Right - Black                          | 34   | <u>5606-060</u> | 1    | Snowflap                          |
|      | <u>4706-295</u> | 1    | Roll, Tunnel - Left - Black                           | 35   | 3606-776        | 1    | Support, Snowflap                 |
| 13   | 8060-502        | AR   | Rivet   | 36   | 0623-184        | 4    | Washer                            |
| 14   | 1623-022        | 4    | Screw, Self-Tapping                                   | 37   | 8047-366        | 4    | Nut, Lock                         |
| 15   | 3606-584        | 2    | Rack  | 38   | 8060-506        | 1    | Rivet                             |
| 16   | 1623-499        | 10   | Screw, Machine  | 39   | 3002-964        | 1    | Clamp, Wire                       |
| 17   | 3606-585        | 1    | Pad, Rubber   | 40   | 0123-788        | 1    | Cable Tie                         |
| 18   | 0623-562        | 1    | Plug, Hole  | 41   | 1623-671        | 8    | Screw, Machine                    |
| 19   | 0509-022        | 1    | Taillight Assembly (inc. 20-22)                       | 42   | 1623-045        | 8    | Spacer                            |
| 20   | 0509-025        | 1    | ● Housing, Taillight                                  | 43   | 0123-802        | 6    | Washer                            |
| 21   | 0409-057        | 1    | ● Socket, Taillight                                   | 44   | 4606-790        | 1    | Guide, Track - Tunnel - Right     |
|      |                 |      |   |      | 4606-791        | 1    | Guide, Track - Tunnel - Left      |
|      |                 |      |   | 45   | <u>8611-307</u> | 2    | Decal, "Sno Pro"                  |



COOLING ASSEMBLY

0742-804

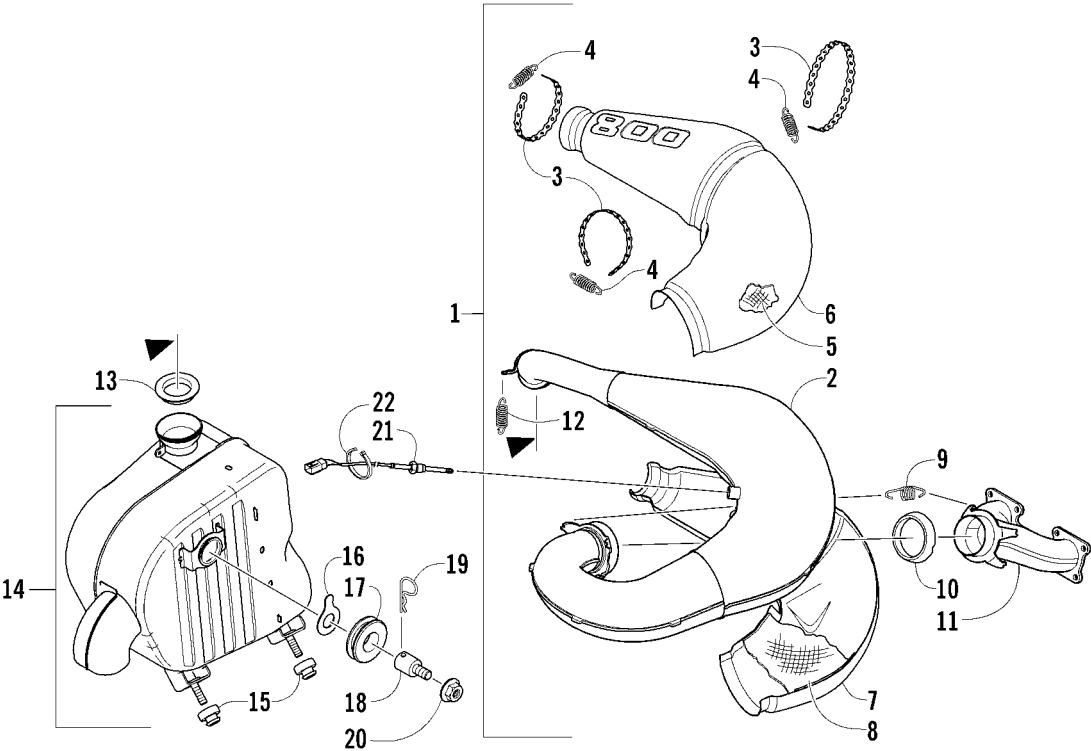
| Ref. | Part No. | Qty. | Description                               | Ref. | Part No. | Qty. | Description                                 |
|------|----------|------|---|------|----------|------|---|
| 1    | 3706-388 | 1    | Heat Exchanger - Rear (inc. 2-3)          | 15   | 1623-093 | 2    | Clamp, Hose                                 |
| 2    | 0623-582 | 1    | ● Insert                                  | 16   | 3706-684 | 1    | Tank, Coolant                               |
| 3    | 0617-534 | 1    | ● Foam, Tunnel/Heat Exchanger             | 17   | 4606-209 | 1    | Cap, Filler Neck                            |
| 4    | 8060-686 | 8    | Rivet                                     | 18   | 5606-040 | 1    | Shield, Heat - Coolant Tank                 |
| 5    | 1623-349 | 6    | Clamp, Hose                               | 19   | 0123-903 | 2    | Cable Tie - 11.5 in.                        |
| 6    | 0610-552 | 2    | Hose, Coolant                             | 20   | 0124-045 | 1    | Clamp, Hose                                 |
| 7    | 3606-564 | 2    | Protector, Hose - Rear                    | 21   | 0610-538 | AR   | Hose, Coolant - 25 ft                       |
| 8    | 8060-484 | AR   | Rivet                                     | 22   | 2604-539 | AR   | Loom - 10 ft                                |
|      | 8060-488 | AR   | Rivet                                     | 23   | 1623-619 | 1    | Clamp                                       |
| 9    | 4606-774 | 1    | Heat Exchanger - Right                    | 24   | 0123-788 | 2    | Cable Tie - 7.5 in.                         |
|      | 4606-776 | 1    | Heat Exchanger - Right (162)              | 25   | 4606-962 | 1    | Pad, Heat Exchanger - Front                 |
| 10   | 4606-775 | 1    | Heat Exchanger - Left                     | 26   | 1619-109 | 2    | Protector, Hose - 7 in.                     |
|      | 4606-777 | 1    | Heat Exchanger - Left (162)               | 27   | 0610-681 | 1    | Hose, Coolant Tank/Engine                   |
| 11   | 4606-270 | 1    | Protector, Hose - Front                   | 28   | 1623-230 | 1    | Clamp, Screw                                |
| 12   | 0610-679 | 1    | Hose, Coolant - Front Heat Exchanger      | 29   | 1623-322 | 1    | Clamp, Hose                                 |
| 13   | 1623-656 | 2    | Clamp, Hose                               | 30   | 0610-705 | 1    | Hose, Coolant - Engine/Front Heat Exchanger |
| 14   | 0610-659 | 1    | Hose, Coolant - Tank/Right Heat Exchanger | 31   | 0619-619 | 1    | Conduit, Flexible - 4 in.                   |



# ENGINE AND RELATED PARTS

0742-805

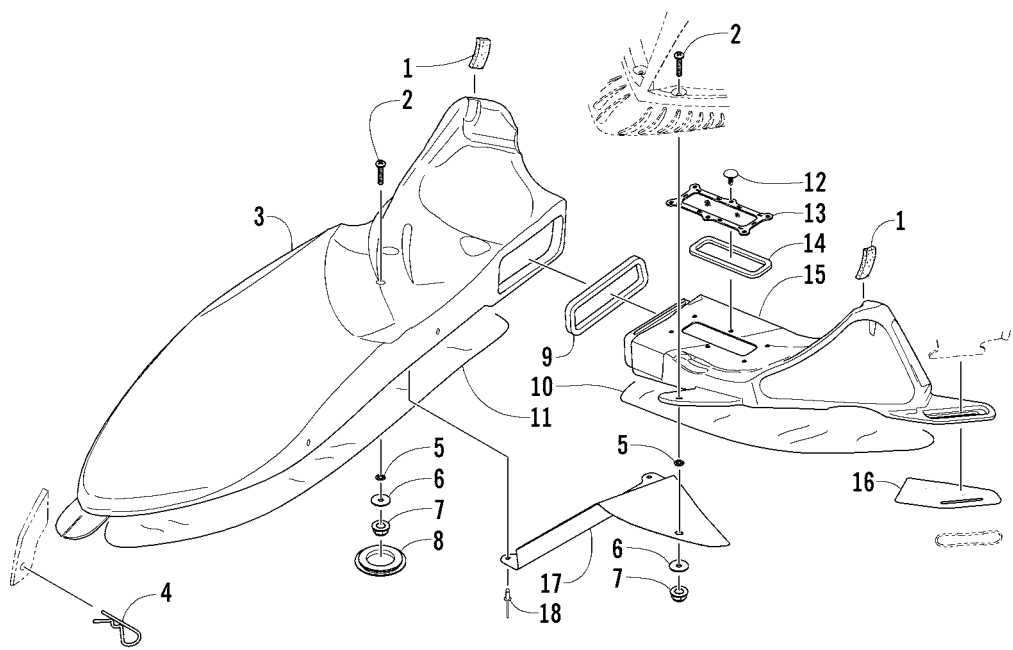
| Ref. | Part No.        | Qty. | Description   | Ref. | Part No.        | Qty. | Description                                      |
|------|-----------------|------|---|------|-----------------|------|--|
| 1    | <u>0662-514</u> | 1    | Engine, AB80L1 w/o EFI Components   | 18   | 0708-519        | 1    | ● Bracket, Engine Mounting - Front - Lower Right |
| 2    | 0636-363        | 1    | Handle, Recoil  | 19   | 0608-549        | 1    | ● Bracket, Engine Mounting - Upper Right         |
| 3    | 0606-885        | 1    | Cap, Recoil Handle  | 20   | 0608-467        | 1    | Cap, Mounting Bracket - Engine                   |
| 4    | 8020-136        | 2    | Screw, Cap  | 21   | 1623-603        | 2    | Screw, Cap                                       |
| 5    | 0708-471        | 1    | Mount, Engine - MAG   | 22   | <u>0708-507</u> | 1    | Bracket, Engine Mounting - Left (inc. 23-24)     |
| 6    | 8047-426        | 5    | Nut, Lock   | 23   | 8060-730        | 2    | ● Rivet  |
| 7    | 1623-504        | 4    | Screw, Cap  | 24   | 0608-565        | 1    | ● Plate, Backing - Torque Bumper                 |
| 8    | 4606-425        | 1    | Foil, Protective  | 25   | 0608-462        | 1    | Bumper, Torque                                   |
| 9    | 0619-619        | 1    | Conduit, Flexible - 4 in.   | 26   | 8408-821        | 4    | Screw, Cap                                       |
| 10   | 1619-131        | 1    | Conduit, Flexible (3/4 in. ID) - 12 in.                                       | 27   | 0746-192        | 1    | Clutch, Drive - Uncalibrated                     |
| 11   | 0123-788        | 2    | Cable Tie   | 28   | 0627-046        | 1    | Belt, Drive                                      |
| 12   | 0623-373        | 4    | Clamp, Hose   | 29   | 0623-210        | 1    | Washer, High Collar                              |
| 13   | <u>0610-774</u> | 1    | Hose, Coolant - MAG/Throttle Body   | 30   | 0623-804        | 1    | Bolt, Clutch                                     |
| 14   | 0619-776        | AR   | Conduit, Flexible - 5 ft  | 31   | 0623-677        | 1    | Cable Tie, Push-Mount                            |
| 15   | 0610-699        | 1    | Hose, Coolant - PTO/Throttle Body   | 32   | <u>1619-221</u> | 1    | Loom, High-Temperature                           |
| 16   | 1623-659        | 2    | Clamp, Push-Mount   | 33   | <u>1619-220</u> | 1    | Loom, High-Temperature                           |
| 17   | 0708-523        | 1    | Bracket, Engine Mounting - Assembly<br>(inc. one No. 4, one No. 6, and 18-19) | 34   | 0623-144        | 1    | Cable Tie, 17.5 in.                              |



EXHAUST ASSEMBLY

0742-806

| Ref. | Part No. | Qty. | Description                                 | Ref. | Part No.            | Qty. | Description                 |
|------|----------|------|---|------|---------------------|------|-----------------------------|
| 1    | 1712-358 | 1    | Chamber, Expansion - Assembly (inc. 2-8)    | 10   | 2612-059            | 1    | Gasket, Exhaust             |
| 2    | 1712-357 | 1    | ● Chamber, Expansion                        | 11   | 1712-300            | 1    | Manifold, Exhaust           |
| 3    | 0624-552 | AR   | ● Tie, Perforated Band - 5 ft               | 12   | 0612-471            | 3    | Spring, Extension           |
|      | 0624-541 | AR   | ● Tie, Perforated Band - 25 ft              | 13   | 1612-323            | 1    | Gasket, Exhaust - Tailpipe  |
| 4    | 1612-178 | 3    | ● Spring, Exhaust                           | 14   | 1712-144            | 1    | Resonator Assembly          |
| 5    | 2612-174 | 1    | ● Packing, Expansion Chamber - Rear - Upper | 15   | <del>2612-186</del> | 2    | Grommet                     |
| 6    | 2612-168 | 1    | ● Cover, Expansion Chamber - Rear - Upper   | 16   | 2612-210            | 1    | Washer, Tab                 |
| 7    | 2612-169 | 1    | ● Cover, Expansion Chamber - Rear - Lower   | 17   | 1623-375            | 1    | Grommet                     |
| 8    | 2612-175 | 1    | ● Packing, Expansion Chamber - Rear - Lower | 18   | 1623-569            | 1    | Pin, Mounting - Resonator   |
| 9    | 2612-257 | 4    | Spring, Exhaust                             | 19   | 1623-379            | 1    | Clip, Hairpin               |
|      |          |      |   | 20   | 8047-486            | 1    | Nut, Lock                   |
|      |          |      |   | 21   | 0630-229            | 1    | Sensor, Exhaust Temperature |
|      |          |      |   | 22   | 0123-788            | 3    | Cable Tie                   |

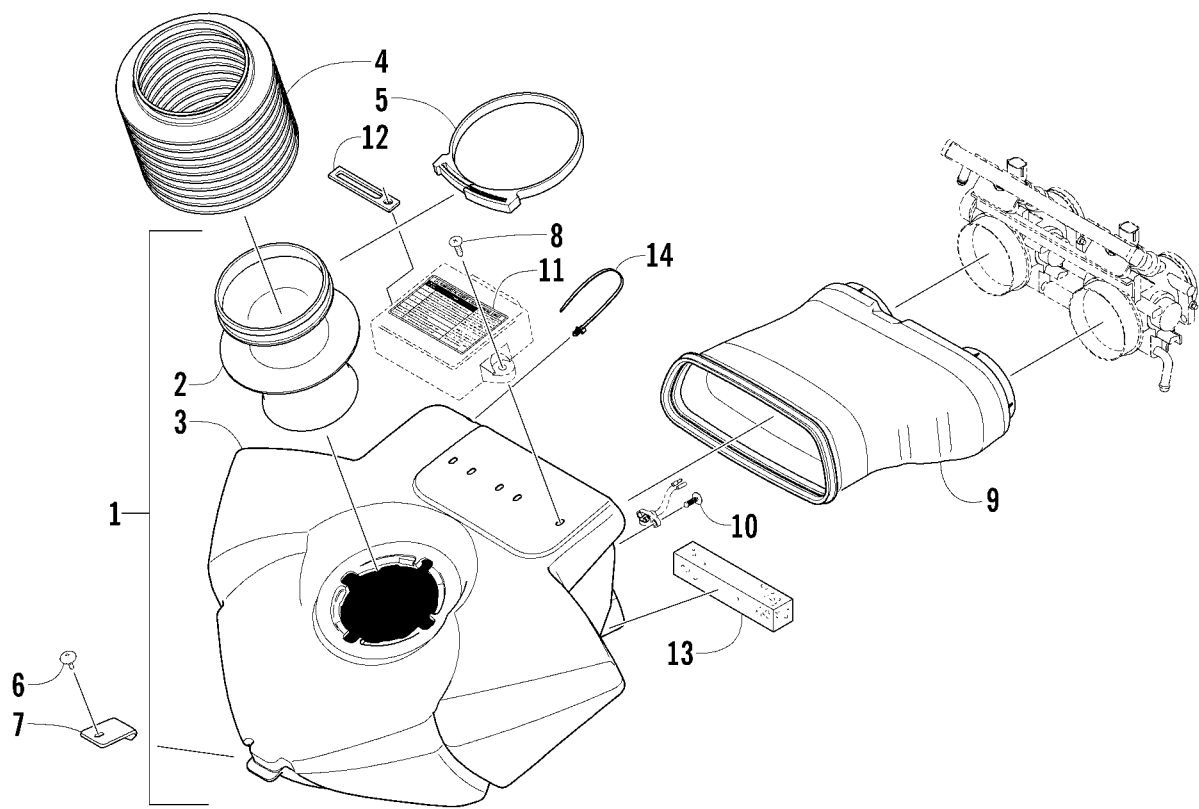


AIR INTAKE ASSEMBLY

0742-463

| Ref. | Part No. | Qty. | Description         | Ref. | Part No.        | Qty. | Description              |
|------|----------|------|---------------------|------|-----------------|------|--------------------------|
| 1    | 0617-500 | 2    | Foam, Air Intake    | 11   | 3606-779        | 1    | Foil, Protective         |
| 2    | 8017-581 | 2    | Screw, Machine      | 12   | 0623-165        | 6    | Clip, Retaining          |
| 3    | 5606-048 | 1    | Intake, Air - Right | 13   | 1670-517        | 1    | Screen, Vent             |
| 4    | 1623-137 | 1    | Clip, Hairpin       | 14   | 0617-499        | 1    | Seal, Air Intake         |
| 5    | 1623-409 | 2    | Nut, Push           | 15   | 3606-481        | 1    | Intake, Air - Left       |
| 6    | 0623-184 | 2    | Washer              | 16   | <u>5606-050</u> | 1    | Foil, Protective - Right |
| 7    | 8047-366 | 2    | Nut, Lock           |      | <u>5606-051</u> | 1    | Foil, Protective - Left  |
| 8    | 0623-600 | 1    | Plug                | 17   | 5606-054        | 1    | Shield, Heat             |
| 9    | 0617-488 | 1    | Foam, Air Intake    | 18   | 0623-778        | 2    | Rivet                    |
| 10   | 3606-811 | 1    | Foil, Protective    |      |                 |      |                          |





AIR SILENCER ASSEMBLY

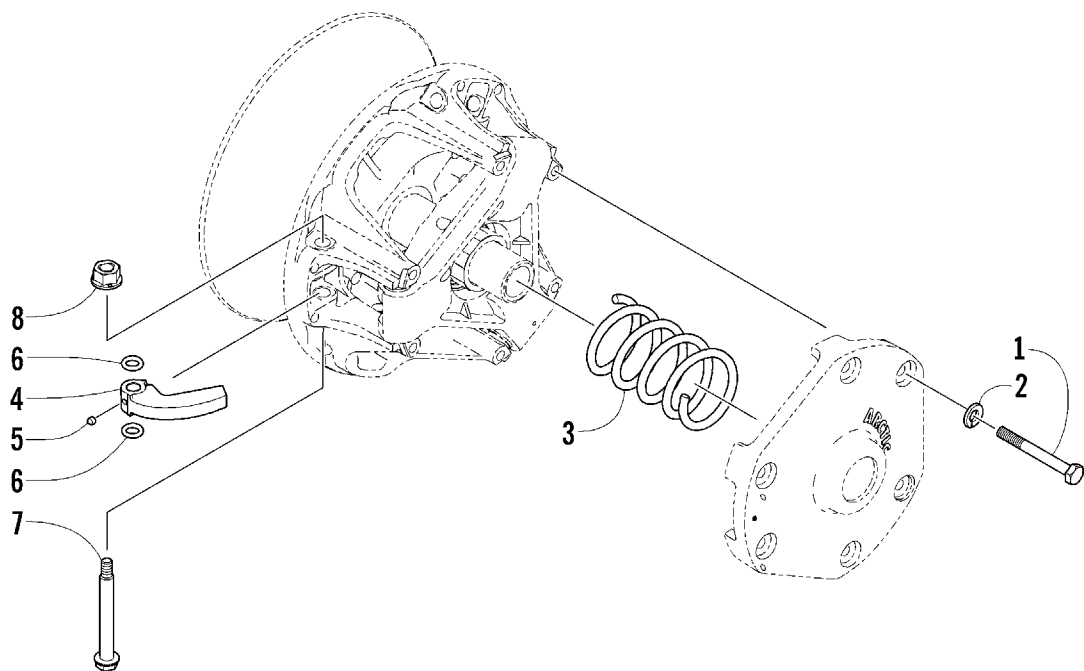
0742-820

| Ref. | Part No. | Qty. | Description                         | Ref. | Part No. | Qty. | Description            |
|------|----------|------|-------------------------------------|------|----------|------|------------------------|
| 1    | 0770-719 | 1    | Silencer, Air - Assembly (inc. 2-3) | 8    | 1623-204 | 2    | Screw, Plastite        |
| 2    | 1670-473 | 1    | ● Intake, Air                       | 9    | 1670-613 | 1    | Boot, Air Silencer     |
| 3    | 1670-754 | 1    | ● Silencer, Air                     | 10   | 0623-165 | 2    | Clip, Retaining        |
| 4    | 1670-514 | 1    | Connector, Air-Intake               | 11   | 8611-251 | 1    | Decal, EFI Diagnostics |
| 5    | 1623-132 | 2    | Clamp, Air-Intake Connector         | 12   | 3002-964 | 1    | Clamp, Wire            |
| 6    | 1623-031 | 1    | Screw, Self-Tapping                 | 13   | 0617-485 | 2    | Foam, Air Silencer     |
| 7    | 3606-146 | 1    | Hold-Down, Air Silencer             | 14   | 0623-677 | 1    | Cable Tie, Push-Mount  |





| Ref. | Part No.        | Qty. | Description                           | Ref. | Part No.        | Qty. | Description         |
|------|-----------------|------|---------------------------------------|------|-----------------|------|---------------------|
| 1    | <u>1670-930</u> | 1    | Tank, Oil                             | 10   | 0124-045        | 2    | Clamp, Hose         |
| 2    | 1670-325        | 1    | Grommet                               | 11   | 0610-693        | AR   | Hose, Oil - 100 ft  |
| 3    | 1670-481        | 1    | Fitting, Oil Tank                     |      | 0610-692        | AR   | Hose, Oil - 25 ft   |
| 4    | 0609-503        | 1    | Sensor, Low Oil - Assembly (inc. 5-6) | 12   | 1623-256        | 1    | Grommet             |
| 5    | 0609-518        | 1    | ● Switch, Oil Sensor w/Harness        | 13   | <u>5606-372</u> | 1    | Shield, Heat        |
| 6    | 0609-237        | 1    | ● Seal, Grommet - Oil Sensor          | 14   | <u>1623-705</u> | 2    | Screw, Machine      |
| 7    | 1670-365        | 1    | Cap, Oil Tank (inc. 8)                | 15   | 1623-499        | 3    | Screw, Machine      |
| 8    | 0109-733        | 1    | ● Seal, Cap - Oil Tank                | 16   | 0623-765        | 1    | Screw, Self-Tapping |
| 9    | 4611-532        | 1    | Decal, Oil Tank                       |      |                 |      |                     |



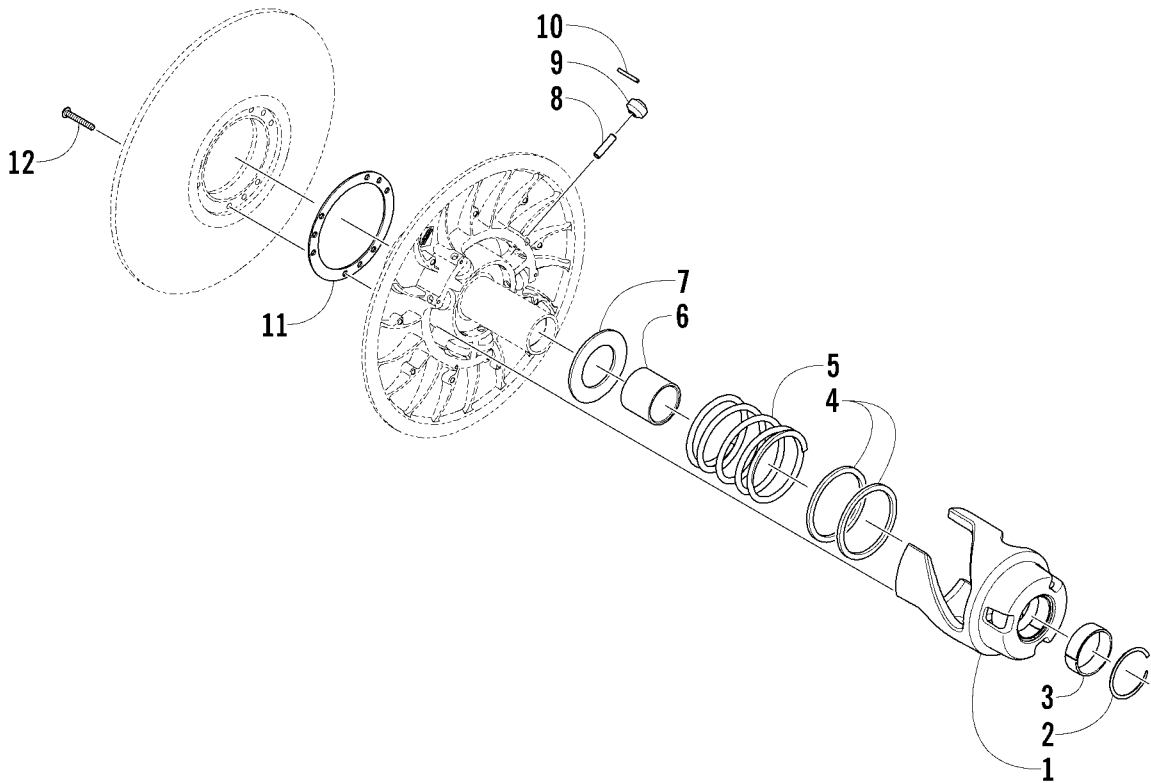
Cam Arm Kit - p/n 4639-674 (inc. 5-8)

DRIVE CLUTCH

(Uncalibrated Drive Clutch - p/n 0746-192)

0741-939

| Ref. Part No. Qty. Description |          |   |   | Ref. Part No. Qty. Description |          |   |              |
|--------------------------------|----------|---|---|--------------------------------|----------|---|--------------|
| 1                              | 1623-442 | 6 | Screw, Machine                            | 5                              | 1623-183 | 3 | ● Screw, Set |
| 2                              | 8051-212 | 6 | Washer, Lock - Spring                     | 6                              | 1602-692 | 6 | O-Ring       |
| 3                              | 0646-229 | 1 | Spring, Drive Clutch - Yellow/White       | 7                              | 0646-747 | 3 | Pin, Cam Arm |
|                                | 0646-379 | 1 | Spring, Drive Clutch - Titanium (Sno Pro) | 8                              | 8048-366 | 3 | Nut, Lock    |
| 4                              | 0746-716 | 3 | Arm, Cam (inc. 5)                         |                                |          |   |              |
|                                | 0746-715 | 3 | Arm, Cam (inc. 5) (0-3,000 ft Alt.)       |                                |          |   |              |
|                                | 0746-672 | 3 | Arm, Cam (inc. 5) (3-6,000 ft Alt.)       |                                |          |   |              |
|                                | 0746-703 | 3 | Arm, Cam (inc. 5) (Over 9,000 ft Alt.)    |                                |          |   |              |

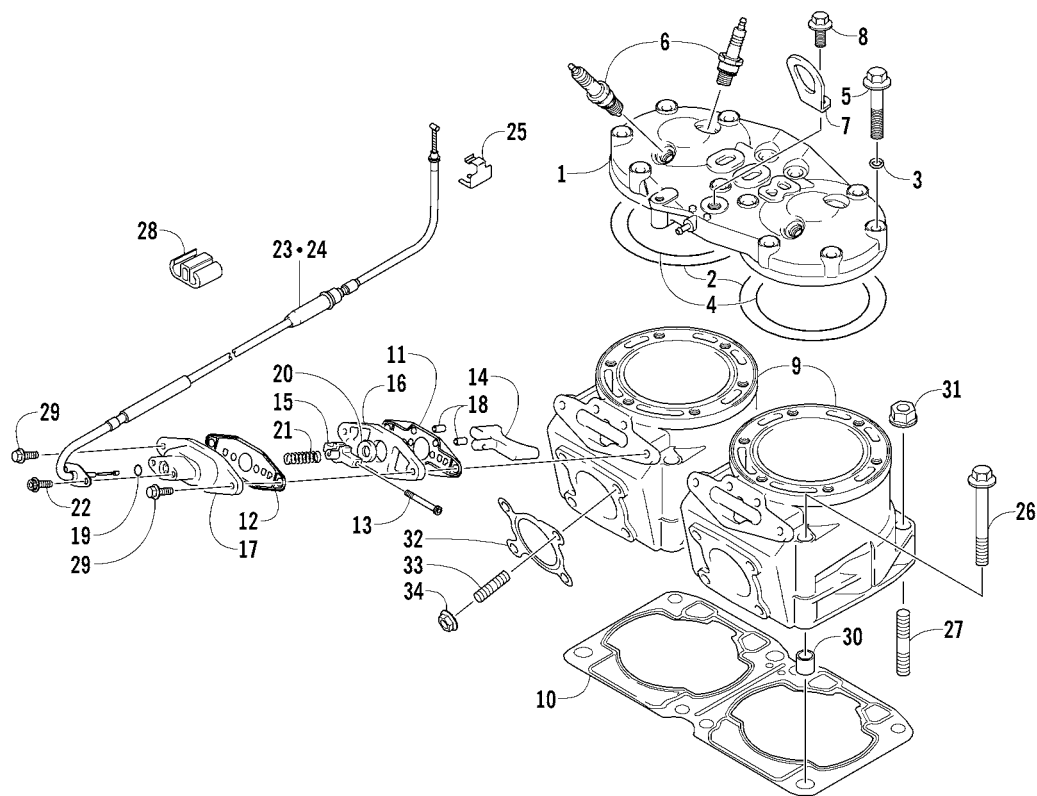


DRIVEN CLUTCH

(Assembly p/n 0726-274)

0741-790

| Ref. | Part No. | Qty. | Description   | Ref. | Part No. | Qty. | Description              |
|------|----------|------|---|------|----------|------|--------------------------|
| 1    | 0748-662 | 1    | Bracket, Torque 36° (inc. 2-3)                          | 6    | 0648-753 | 1    | Spacer                   |
|      | 0748-663 | 1    | Bracket, Torque 44°/40° (inc. 2-3)<br>(0-6,000 ft Alt.) | 7    | 0648-453 | 1    | Seat, Spring             |
| 2    | 0648-433 | 1    | ● Ring, Snap  | 8    | 0648-097 | 6    | Pin, Cam Roller          |
| 3    | 0648-009 | 1    | ● Bearing   | 9    | 0648-139 | 6    | Roller, Cam              |
| 4    | 0648-713 | 2    | Seat, Spring - Driven Clutch                            | 10   | 8070-224 | 6    | Pin, Spring              |
| 5    | 0648-774 | 1    | Spring, Driven Clutch - Orange                          | 11   | 0648-650 | 1    | Retainer, Torque Bracket |
|      |          |      |   | 12   | 1623-517 | 9    | Screw, Machine           |



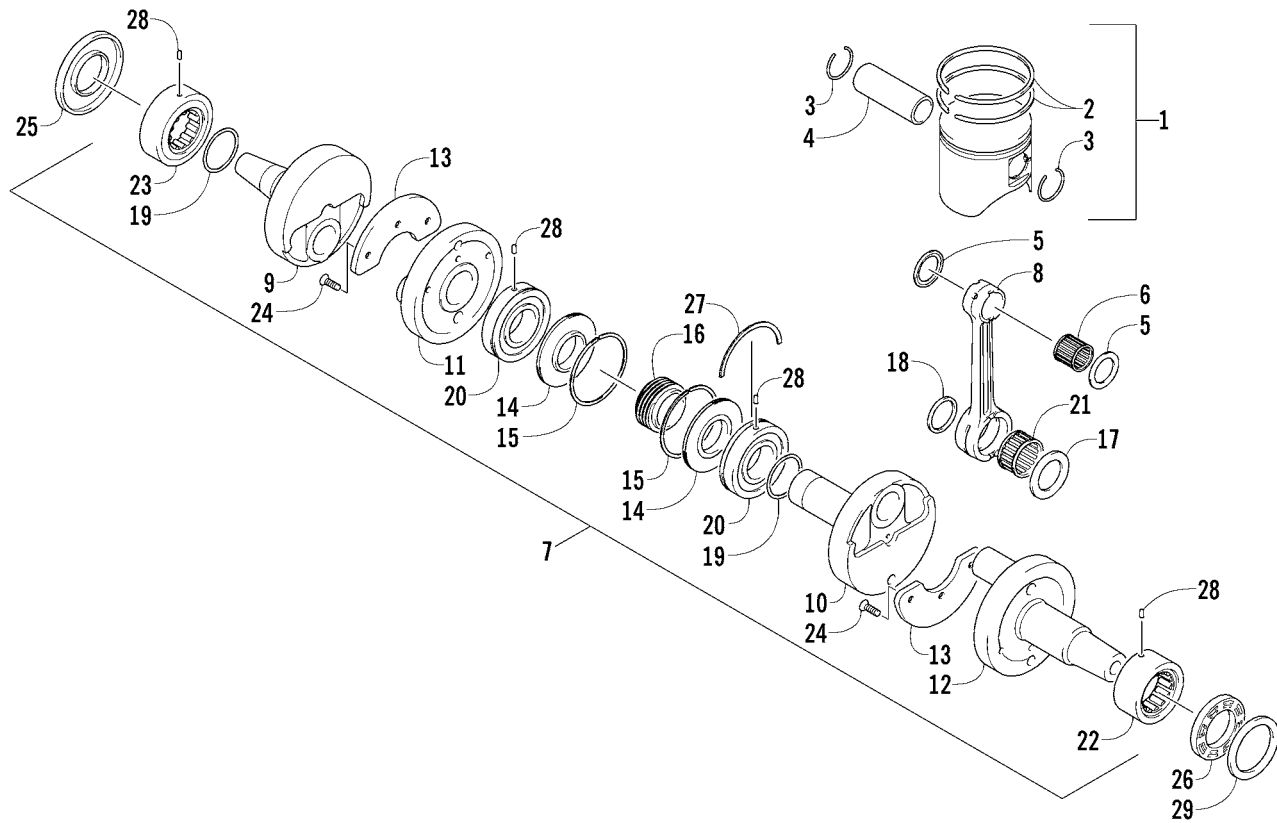
# CYLINDER AND HEAD ASSEMBLY

0742-050

| Ref. | Part No. | Qty. | Description                 | Ref. | Part No. | Qty. | Description                 |
|------|----------|------|-----------------------------|------|----------|------|-----------------------------|
| 1    | 3007-521 | 1    | Head, Cylinder              | 18   | 3006-321 | 4    | Pin, Dowel                  |
| 2    | 3004-081 | 2    | O-Ring                      | 19   | 3005-226 | 2    | O-Ring                      |
| 3    | 3003-227 | 14   | O-Ring                      | 20   | 3006-322 | 2    | Seal, Oil                   |
| 4    | 3005-854 | 2    | O-Ring                      | 21   | 3006-484 | 2    | Spring                      |
| 5    | 3006-538 | 14   | Bolt                        | 22   | 3007-433 | 4    | Bolt                        |
| 6    | 0217-709 | 4    | Plug, Spark (BR9EYA)        | 23   | 3007-247 | 1    | Cable, Exhaust Valve - MAG  |
| 7    | 3006-496 | 1    | Hook, Engine                | 24   | 3007-248 | 1    | Cable, Exhaust Valve - PTO  |
| 8    | 3007-432 | 1    | Bolt                        | 25   | 3005-747 | 1    | Holder, Exhaust Valve Cable |
| 9    | 3007-522 | 2    | Cylinder                    | 26   | 3007-525 | 4    | Bolt                        |
| 10   | 3007-523 | 1    | Gasket, Cylinder            | 27   | 3005-847 | 4    | Bolt, Stud                  |
| 11   | 3007-244 | 2    | Gasket, Exhaust Valve Case  | 28   | 3005-808 | 1    | Clamp, Exhaust Valve Cable  |
| 12   | 3006-436 | 2    | Gasket, Exhaust Valve Cover | 29   | 3007-434 | 4    | Bolt                        |
| 13   | 3005-983 | 2    | Pin, Exhaust Valve          | 30   | 3004-975 | 4    | Pin, Dowel                  |
| 14   | 3007-524 | 2    | Valve, Exhaust              | 31   | 3007-391 | 4    | Nut                         |
| 15   | 3005-860 | 2    | Stopper, Exhaust Valve      | 32   | 3007-536 | 2    | Gasket, Exhaust             |
| 16   | 3006-495 | 2    | Plate, Exhaust Valve        | 33   | 3007-415 | 8    | Bolt, Stud                  |
| 17   | 3006-425 | 2    | Cover, Exhaust Valve        | 34   | 3007-390 | 8    | Nut                         |



| Ref. | Part No. | Qty. | Description          | Ref. | Part No. | Qty. | Description  |
|------|----------|------|----------------------|------|----------|------|--------------|
| 1    | 3007-526 | 1    | Crankcase (inc. 2-7) | 5    | 3007-527 | 1    | ● Bolt       |
| 2    | 3006-538 | 2    | ● Bolt               | 6    | 3003-647 | 1    | ● Bushing    |
| 3    | 3006-488 | 10   | ● Bolt               | 7    | 3005-206 | 2    | ● Pin, Dowel |
| 4    | 3007-445 | 2    | ● Bolt               |      |          |      |              |



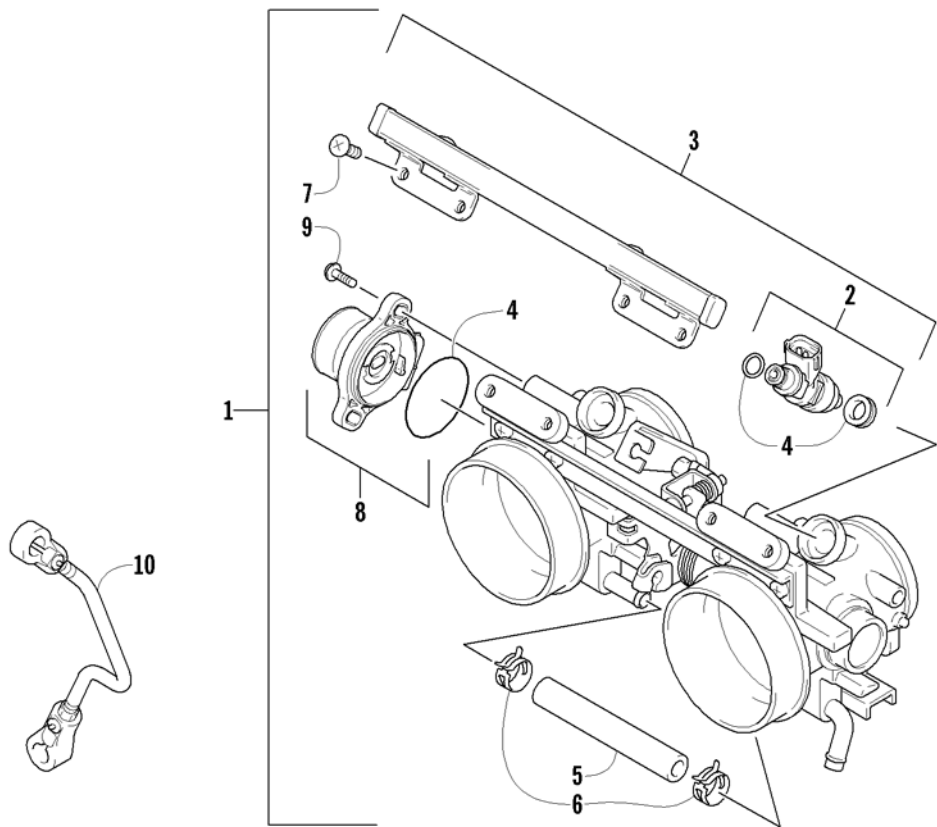
PISTON AND CRANKSHAFT

0742-055

| Ref. | Part No. | Qty. | Description                     | Ref. | Part No. | Qty. | Description               |
|------|----------|------|---------------------------------|------|----------|------|---------------------------|
| 1    | 3007-528 | 2    | Piston Set (inc. 2-3)           | 16   | 3006-519 | 1    | ● Gear, Oil Pump Drive    |
| 2    | 3006-394 | 2    | ● Ring Set, Piston              | 17   | 3004-147 | 2    | ● Washer                  |
| 3    | 3005-304 | 4    | ● Circlip, Piston               | 18   | 3006-489 | 2    | ● Washer                  |
| 4    | 3006-501 | 2    | Pin, Piston                     | 19   | 3008-495 | 2    | ● Washer                  |
| 5    | 3008-500 | 4    | Washer                          | 20   | 3008-421 | 2    | ● Bearing                 |
| 6    | 3008-503 | 2    | Bearing                         | 21   | 3007-532 | 2    | ● Bearing, Crankshaft Pin |
| 7    | 3007-529 | 1    | Crankshaft Assembly (inc. 8-26) | 22   | 3007-439 | 1    | ● Bearing - Left          |
| 8    | 3007-530 | 2    | ● Connecting Rod                | 23   | 3006-551 | 1    | ● Bearing - Right         |
| 9    | 3007-531 | 1    | ● Crankshaft - Right            | 24   | 3007-440 | 6    | ● Screw                   |
| 10   | 3007-437 | 1    | ● Crankshaft - Middle           | 25   | 3007-533 | 1    | ● Seal, Oil - Right       |
| 11   | 3007-438 | 1    | ● Wheel, Crankshaft             | 26   | 3003-759 | 1    | ● Seal, Oil - Left        |
| 12   | 3006-506 | 1    | ● Crankshaft - Left             | 27   | 3003-359 | 1    | C-Ring                    |
| 13   | 3006-719 | 2    | ● Balancer, Crankshaft          | 28   | 3003-658 | 4    | Pin, Alignment            |
| 14   | 3006-508 | 2    | ● Race, Middle Crank Seal       | 29   | 3006-552 | 1    | Spacer, Oil Seal          |
| 15   | 3005-508 | 2    | ● Ring, Middle Crank Seal       |      |          |      |                           |



| Ref. | Part No. | Qty. | Description                       | Ref. | Part No. | Qty. | Description  |
|------|----------|------|-----------------------------------|------|----------|------|--------------|
| 1    | 3007-534 | 2    | Valve, Reed - Assembly (inc. 2-4) | 6    | 3006-527 | 2    | Pipe, Intake |
| 2    | 3007-535 | 4    | ● Stopper                         | 7    | 3402-455 | 2    | Clamp        |
| 3    | 3005-878 | 4    | ● Valve, Reed                     | 8    | 3007-380 | 12   | Bolt         |
| 4    | 3004-506 | 16   | ● Screw                           | 9    | 3002-964 | 1    | Clamp, Wire  |
| 5    | 3005-879 | 2    | Gasket, Reed Valve                |      |          |      |              |

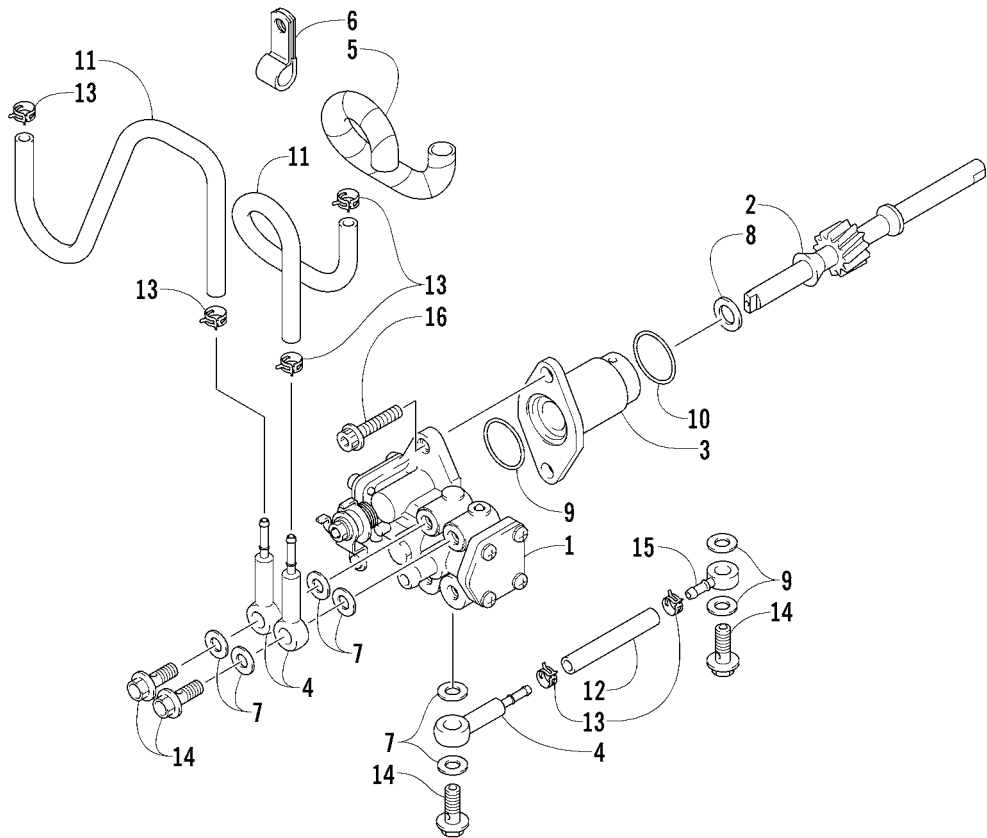


THROTTLE BODY ASSEMBLY

0742-062

| Ref. | Part No. | Qty. | Description                          | Ref. | Part No. | Qty. | Description                   |
|------|----------|------|--------------------------------------|------|----------|------|-------------------------------|
| 1    | 3007-537 | 1    | Body, Throttle - Assembly (inc. 2-9) | 5    | 3006-723 | 1    | ● Hose                        |
| 2    | 3006-059 | 2    | ● Injector, Fuel - Assembly ●        | 6    | 3004-193 | 2    | ● Clip                        |
|      | 3006-060 | 2    | ● Injector, Fuel - Assembly ■        | 7    | 3007-443 | 4    | ● Screw                       |
|      | 3006-061 | 2    | ● Injector, Fuel - Assembly ▲        | 8    | 3006-939 | 1    | ● Sensor, Throttle - Assembly |
| 3    | 3007-442 | 1    | ● Pipe, Delivery                     | 9    | 3007-026 | 2    | ● Screw                       |
| 4    | 3005-692 | 1    | ● O-Ring - Set                       | 10   | 3007-538 | 1    | Rod, Oil Pump Control         |

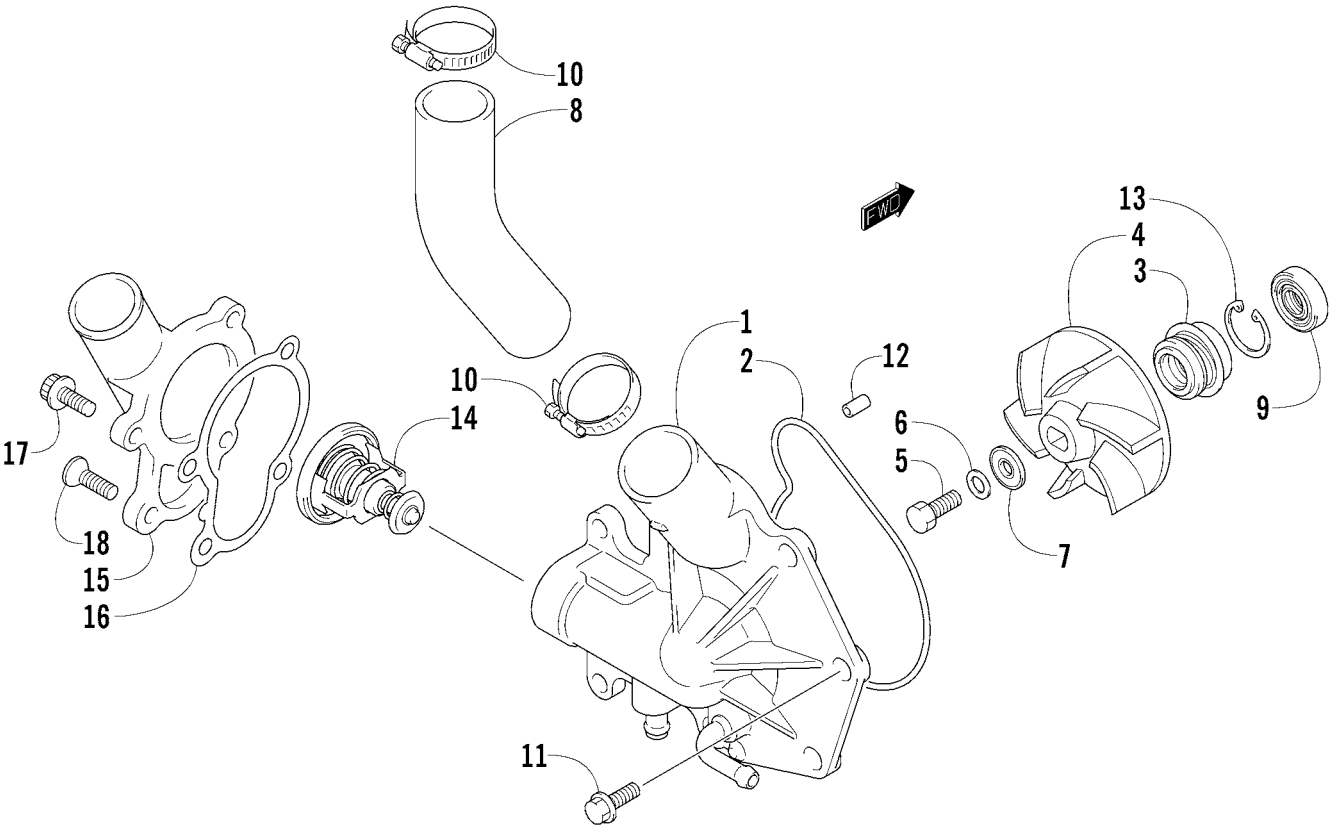




# OIL PUMP

0742-077

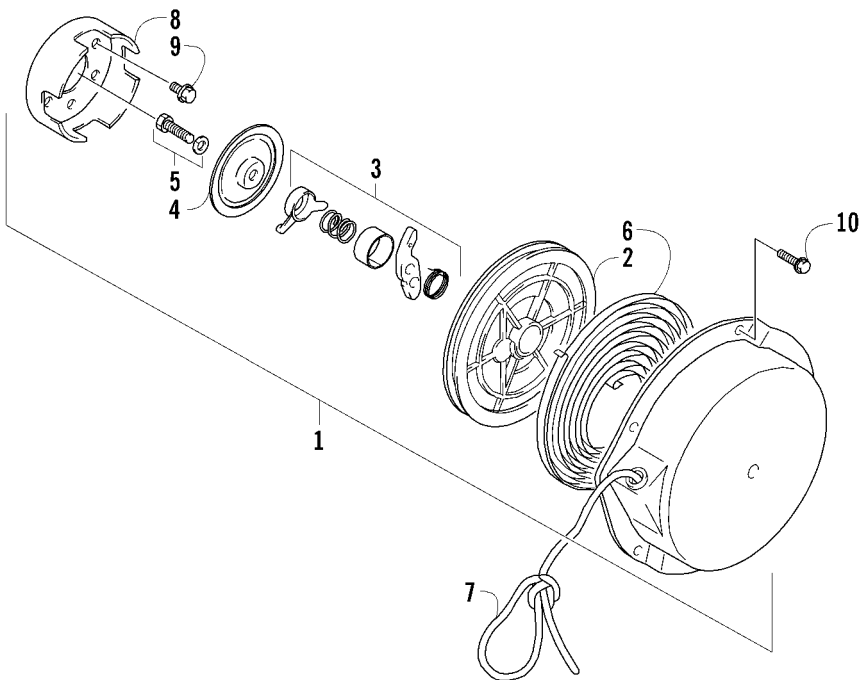
| Ref. | Part No. | Qty. | Description                    | Ref. | Part No. | Qty. | Description |
|------|----------|------|--------------------------------|------|----------|------|-------------|
| 1    | 3007-539 | 1    | Pump, Oil                      | 9    | 3008-030 | 1    | O-Ring      |
| 2    | 3006-520 | 1    | Gear, Driven - Oil Pump        | 10   | 3005-126 | 1    | O-Ring      |
| 3    | 3005-884 | 1    | Retainer, Oil Pump Input Shaft | 11   | 3008-035 | 2    | Hose, Oil   |
| 4    | 3003-217 | 3    | Valve, Check                   | 12   | 3005-357 | 1    | Hose        |
| 5    | 3005-032 | 2    | Protector                      | 13   | 3008-037 | 6    | Clamp, Hose |
| 6    | 3005-696 | 2    | Clamp                          | 14   | 3004-346 | 4    | Bolt        |
| 7    | 3402-009 | 8    | Gasket                         | 15   | 3003-661 | 1    | Union       |
| 8    | 3423-300 | 1    | Shim, Oil Pump Shaft           | 16   | 3007-445 | 2    | Bolt        |



WATER PUMP/WATER MANIFOLD

0742-079

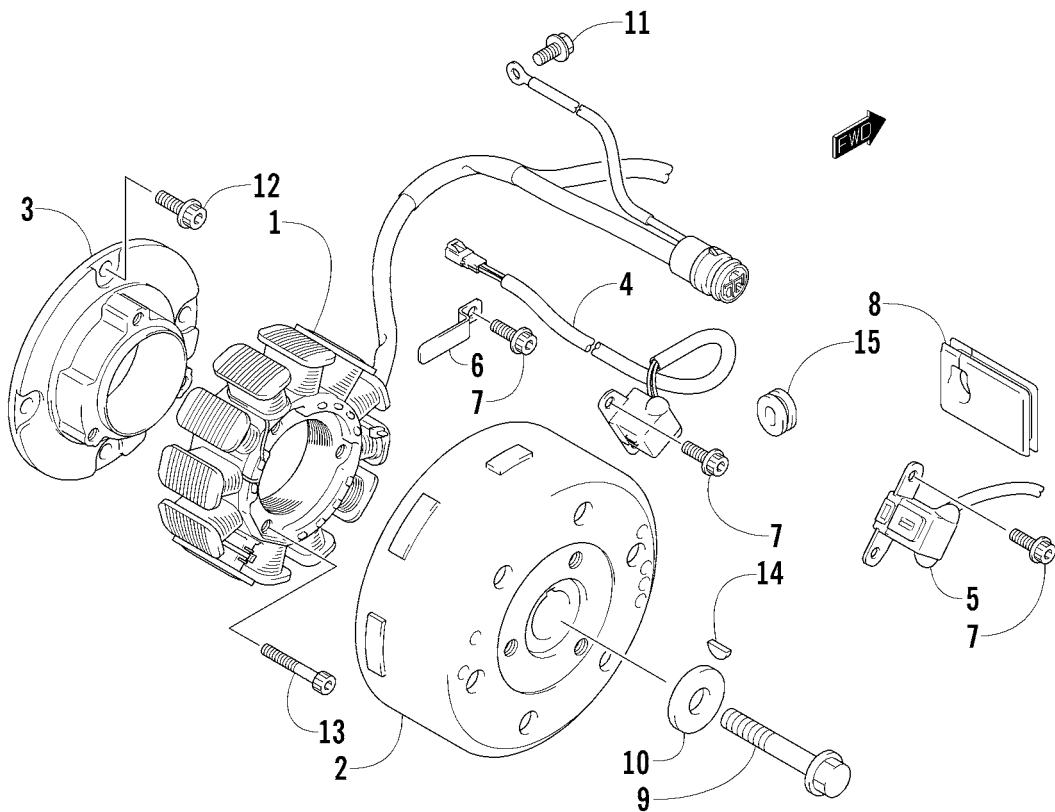
| Ref. | Part No. | Qty. | Description             | Ref. | Part No. | Qty. | Description            |
|------|----------|------|-------------------------|------|----------|------|------------------------|
| 1    | 3007-540 | 1    | Case, Water Pump        | 10   | 3004-786 | 2    | Clamp                  |
| 2    | 3007-541 | 1    | O-Ring, Water Pump Case | 11   | 3007-409 | 7    | Bolt                   |
| 3    | 3007-180 | 1    | Seal, Water Pump        | 12   | 3005-899 | 2    | Pin, Dowel             |
| 4    | 3005-697 | 1    | Impeller, Water Pump    | 13   | 3004-009 | 1    | Circlip                |
| 5    | 3003-426 | 1    | Bolt                    | 14   | 3007-041 | 1    | Thermostat             |
| 6    | 3003-431 | 1    | Washer                  | 15   | 3007-304 | 1    | Cap, Thermostat        |
| 7    | 3003-432 | 1    | Washer                  | 16   | 3007-543 | 1    | Gasket, Thermostat Cap |
| 8    | 3007-542 | 1    | Hose, Water Inlet       | 17   | 3007-446 | 3    | Bolt                   |
| 9    | 3007-431 | 1    | Seal, Oil               | 18   | 3007-306 | 1    | Bolt                   |



RECOIL STARTER

0741-373

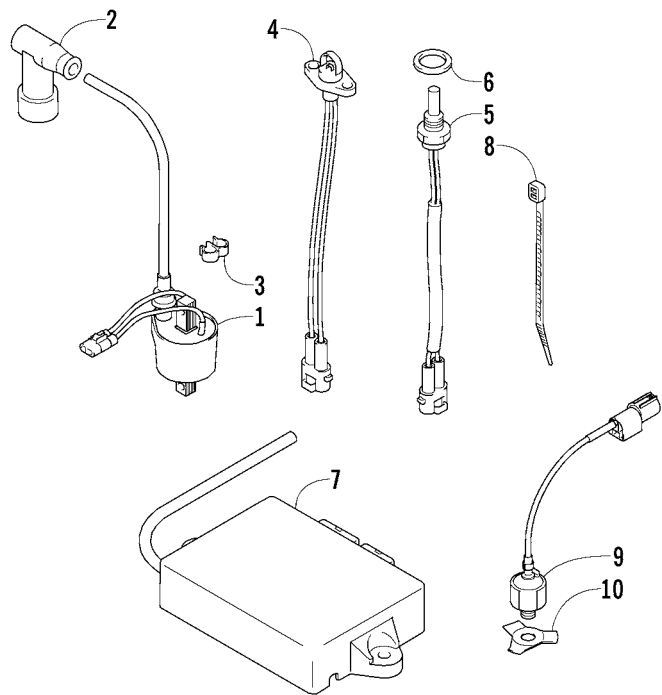
| Ref. | Part No. | Qty. | Description                 | Ref. | Part No. | Qty. | Description     |
|------|----------|------|-----------------------------|------|----------|------|-----------------|
| 1    | 3007-307 | 1    | Starter Assembly (inc. 2-6) | 6    | 3007-312 | 1    | ● Spring        |
| 2    | 3007-308 | 1    | ● Roller, Starter           | 7    | 3006-889 | 1    | Rope, Starter   |
| 3    | 3007-309 | 1    | ● Ratchet Set               | 8    | 3007-544 | 1    | Pulley, Starter |
| 4    | 3007-310 | 1    | ● Plate, Friction           | 9    | 3007-407 | 3    | Screw, Cap      |
| 5    | 3007-311 | 1    | ● Bolt w/Washer             | 10   | 3423-346 | 5    | Screw, Cap      |



MAGNETO

0742-081

| Ref. | Part No. | Qty. | Description               | Ref. | Part No. | Qty. | Description |
|------|----------|------|---------------------------|------|----------|------|-------------|
| 1    | 3007-623 | 1    | Stator                    | 9    | 3006-476 | 1    | Bolt        |
| 2    | 3007-315 | 1    | Rotor/Flywheel            | 10   | 3005-987 | 1    | Washer      |
| 3    | 3007-546 | 1    | Base, Stator - Plate      | 11   | 3007-371 | 1    | Bolt        |
| 4    | 3007-317 | 1    | Sensor, Ignition Timing   | 12   | 3007-449 | 4    | Bolt        |
| 5    | 3007-318 | 1    | Sensor, Ignition Timing   | 13   | 3007-450 | 3    | Bolt        |
| 6    | 3005-960 | 1    | Plate, Stator Lead Wire   | 14   | 3004-540 | 1    | Key         |
| 7    | 3007-433 | 5    | Bolt                      | 15   | 3007-547 | 1    | Grommet     |
| 8    | 3005-775 | 1    | Grommet, Stator Lead Wire |      |          |      |             |



ELECTRICAL

0742-083

| Ref. | Part No. | Qty. | Description               | Ref. | Part No.            | Qty. | Description              |
|------|----------|------|---------------------------|------|---------------------|------|--------------------------|
| 1    | 3007-548 | 4    | Coil, Ignition - Assembly | 7    | <del>3007-605</del> | 1    | ECU ●                    |
| 2    | 3006-367 | 4    | Cap, Spark Plug           |      | <del>3007-606</del> | 1    | ECU ■                    |
| 3    | 3005-387 | 2    | Clip                      |      | <del>3007-607</del> | 1    | ECU ▲                    |
| 4    | 3006-728 | 1    | Sensor, Temperature       | 8    | 3005-237            | 1    | Cable Tie                |
| 5    | 3006-725 | 1    | Sensor, Coolant           | 9    | 3006-886            | 1    | Sensor, Knock            |
| 6    | 3005-233 | 1    | Washer, Coolant Sensor    | 10   | 3007-549            | 1    | Plate, Knock Sensor Lock |



| Ref. | Part No. | Qty. | Description        | Ref. | Part No. | Qty. | Description |
|------|----------|------|--------------------|------|----------|------|-------------|
| 1    | 3007-067 | 1    | Servomotor         | 3    | 3007-550 | 1    | Nut         |
| 2    | 3005-661 | 1    | Pulley, Controller |      |          |      |             |

